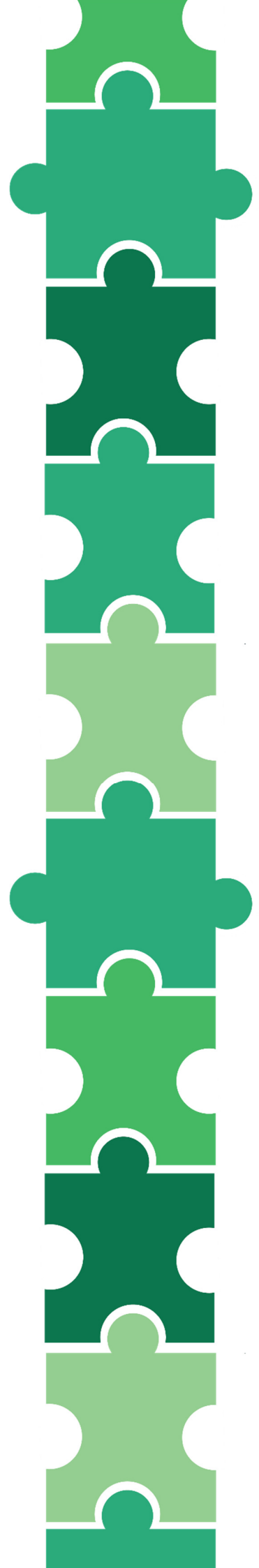




2023

NT Electoral  
Boundary Redistribution

# Information Guide



**© 2023. This publication is copyright.**

No part may be reproduced by any process without written permission from the Chairperson of the Redistribution Committee, except that permission is given for the use and reproduction of statistics included in this publication.

Produced by the Redistribution Committee  
GPO Box 2419, Darwin NT 0801

**DARWIN**

Level 3  
TCG Centre  
80 Mitchell Street  
Darwin NT 0800

**Phone:** 08 8999 5000

**Fax:** 08 8999 7630

**Email:** [secretariat.ntec@nt.gov.au](mailto:secretariat.ntec@nt.gov.au)

**Website:** [ntec.nt.gov.au](http://ntec.nt.gov.au)

Documented updated: 18/9/2023 4:59 PM

# Contents

- Glossary**..... 1
- What is a redistribution?**..... 3
- The Redistribution Committee**..... 3
- The legislation**..... 3
- The object, principles and matters to be considered**..... 4
- Calculating the quota** ..... 5
- Division names**..... 5
- The redistribution process** ..... 7
- Redistribution timeline** ..... 8
- How to make suggestions, comments and objections**..... 9
- Data provided** ..... 9
- Appendix A** ..... 10
  - Enrolment numbers comparison 2012 – 2022 ..... 10
- Appendix B**..... 11
  - Enrolment and variance from the quota ..... 11
- Appendix C**..... 12
  - Maps showing 2019 (current) Legislative Assembly boundaries ..... 12

## Glossary

<b>ABS</b>	Australian Bureau of Statistics – federal agency responsible for the collection, collation and dissemination of statistics relating to the Australian community, including population data.
<b>AEC</b>	Australian Electoral Commission – federal agency responsible for maintaining the Northern Territory electoral roll and supplying roll products.
<b>APPOINTED MEMBER</b>	See Chairperson
<b>BOUNDARIES</b>	The external borders of an electoral division created for the election of a member to the Northern Territory’s Legislative Assembly.
<b>CHAIRPERSON</b>	The Chairperson is the appointed member of the Redistribution Committee. The person must have served as, or is qualified for appointment as, a Supreme Court Judge or Local Court Judge, cannot be a member of a political party and cannot have recent political affiliation. They are appointed by the Administrator.
<b>COMMITTEE</b>	See Redistribution Committee
<b>COMMISSION</b>	Northern Territory Electoral Commission
<b>DIVISION</b>	An electoral area represented by a Member in the Legislative Assembly, also called an electorate. There are 25 divisions in the Northern Territory with each division represented by one member.
<b>FDEU</b>	Federal Direct Enrolment Update – a program conducted by the Australian Electoral Commission where data collected by certain government agencies is used to enrol an unenrolled person, or update a person’s enrolment.
<b>FIRST PROPOSED REDISTRIBUTION</b>	The committee considers the public’s suggestions and comments on these suggestions and prepares a first proposed redistribution of division boundaries, including proposed names. The public are then invited to communicate their objections to any of the proposed boundaries and names.
<b>JOINT ROLL</b>	The electoral roll, or list of electors, eligible to vote for both Commonwealth and Northern Territory elections. The joint roll is maintained under a formal arrangement between the Governor-General and the Administrator, and is administered by the Australian Electoral Commission.
<b>MLA</b>	Member of the Legislative Assembly
<b>NTEC</b>	Northern Territory Electoral Commission
<b>NTG</b>	Northern Territory Government

<b>REDISTRIBUTION COMMITTEE</b>	An independent four person committee that is responsible for managing the redistribution process. The committee consists of the Auditor-General, the Electoral Commissioner, the Surveyor-General and an appointed member (who is also the Chairperson).
<b>REDISTRIBUTION REPORTS</b>	Legislation requires that once the redistribution is finalised, a report is required that must include the details of all suggestions, comments and objections received by the committee, maps of divisions, the reasons behind the boundary determinations, and reasons why there was or was not an objection period for the second redistribution. While not a legislative requirement, the first and second proposed redistributions are also presented as reports and include the same content listed above.
<b>SA1s</b>	Statistical Areas Level 1 – the smallest area for which a wide range of Census data is released, with an average population of about 400 (although are generally between 200 – 800). Enrolment numbers per each SA1 are used as the base for determining electoral areas, and this data is publically available during a redistribution.
<b>SECOND PROPOSED REDISTRIBUTION</b>	The committee must consider all the objections received concerning their first proposed redistribution and then prepare a second proposed redistribution. The second proposed redistribution should also include any adjustments required as a result of calculating the quota a second time after the receipt of objections. If the second proposed redistribution is ‘significantly different’ (as defined in s145B of <i>Electoral Act 2004</i> ) to the first, the committee must invite objections to the second proposed redistribution.
<b>SUBMISSION</b>	Any member of the public, or organisations, can submit: suggestions for changes to electoral boundaries and division names; comments on these suggestions; and objections to proposed changes. These submissions will be considered by the committee in their deliberations.

## What is a redistribution?

The Northern Territory (NT) is divided into 25 electoral divisions with each division having one member of the NT's Legislative Assembly to represent the people residing in them.

The boundaries of each division are reviewed every 4 years in the 18 month period prior to the general election for the Legislative Assembly, to see if any changes are required to ensure that the **number of electors in each division is as near to equal as practicable**. This review process, which includes several stages of public consultation, is called a redistribution, as certain areas of the NT and the electors who reside there, may be distributed from one division to another in order to balance the numbers.

Any changes made as a result of a redistribution come into effect at the next general election.

## The Redistribution Committee

The redistribution process is managed by the Redistribution Committee (the committee) which consists of the following members:

- Auditor-General
- Electoral Commissioner
- Surveyor-General
- an appointed member – who must be a person who has served as, or is qualified for appointment as, a Supreme Court Judge or Local Court Judge, is not a member of a political party and does not have a recent political affiliation.

The appointed member is the Chairperson of the Redistribution Committee.

## The legislation

That the NT is distributed into electoral divisions for the purposes of electing members of the Legislative Assembly is provided for in section 13 of the [Northern Territory \(Self-Government\) Act 1978](#). This section also includes the process for calculating the quota to be used (i.e. the number of electors that each division should have to be near to equal) and that each division cannot exceed, or fall short of the quota by more than one fifth of the quota.

The timeline and processes under which the redistribution is to be conducted are set out in Part 8 of the NT's [Electoral Act 2004](#). This section also includes the object, principles and matters to be considered (detailed over the page) that the committee must comply with in their deliberations.

Part 16 of the [Electoral Act 2004](#) provides for the establishment and composition of the Redistribution Committee as well as its functions, powers and procedures.

## Object, principles and matters to be considered

### *Object of redistribution*

The *Electoral Act 2004* distinguishes a single primary objective for the redistribution, being that, at the time of the next general election, the number of electors in each proposed division is as near to equal as practicable (s 139).

### *Principles of redistribution*

The *Electoral Act 2004* also provides guiding principles that the committee is to regard in trying to achieve the object of redistribution (s 139A).

These principles are:

- (a) the physical area of a division that has both rural and remote areas should be as small as practicable
- (b) the demographic characteristics of a division should be as uniform as practicable
- (c) the geographic features of a division should be as uniform as practicable
- (d) each identifiable community should be included in only one division if practicable
- (e) subject to (a) to (d), changes to existing divisions should minimise the number of electors being transferred from one division to another.

### *Matters to be considered in redistribution*

The *Electoral Act 2004* also provides further matters to be considered by the committee in trying to achieve the object of redistribution. The first matter reinforces section 13 of the *Northern Territory (Self Government) Act 1978*, by which the committee must ensure the number of electors in each division does not exceed or fall short of the quota by one fifth of the quota.

In addition, the legislation states that the committee must give proper consideration to the following:

- (a) communities of interests in each proposed division, including economic, social and regional interests
- (b) types of communication and travel in each proposed division, in particular the disadvantages arising out of remoteness or distance
- (c) population trends in the Territory
- (d) the density of population in each proposed division
- (e) the area size of each proposed division
- (f) the physical features of each proposed division
- (g) the existing boundaries of the following:
  - (i) divisions
  - (ii) local government areas and wards, as well as suburbs and towns
  - (iii) federal electoral divisions or subdivisions
  - (iv) Aboriginal land council areas.
- (h) all suggestions and comments from the public.

## Calculating the quota

With the object of redistribution being that the number of electors in each division be as near to equal as practicable, the quota of electors is the average number of electors across all 25 divisions. This is calculated by dividing the total number of electors in the NT by its 25 divisions.

The total number of electors in the NT at 15 September 2023 was 151,188. Therefore the quota is:

$$\frac{\text{Number of electors}}{\text{Number of divisions}} = \frac{151,188}{25} = 6,047.52 \text{ which equates to } 6,048 \text{ electors per division.}$$

Both the *Electoral Act 2004* and the *Northern Territory (Self-Government) Act 1918* state that each division cannot exceed, or fall short of the quota by more than one fifth of the quota, or 20%. For the September quota, 20% of 6,048 is 1,209.6 electors:

$$6,048 \times 0.2 = 1,209.6 \text{ which equates to } 1,210 \text{ electors.}$$

This means the minimum number of electors for each division is:

$$6,048 - 1,210 = 4,838$$

The maximum number of electors is:

$$6,048 + 1,210 = 7,258.$$

The quota is calculated twice during the redistribution process. The legislation requires it to be calculated as soon as practicable:

- (a) after the establishment of the Redistribution Committee (February); and
- (b) after the public objection period for the first proposed redistribution has closed (approx. June).

Additionally, the committee may calculate the quota at any other time during the redistribution process if they are of the opinion that calculating the quota would either:

- (a) improve the accuracy of the redistribution; or
- (b) achieve the object of redistribution.

## Division names

In addition to proposing boundaries for NT's 25 electoral divisions, the *Electoral Act 2004* allows the committee to propose new names for divisions, but only if the existing name is no longer appropriate (s 139B). The legislation also specifies that the use of locality names should be avoided.

Locality names (in particular suburb names) have previously been used in many instances in the NT. However, as boundaries change, these names may no longer be relevant, or may become confusing, when a suburb no longer lies wholly within one division.

Typically, the names of Commonwealth electoral divisions and of living persons are avoided and divisions are now often named after a person who has died and given significant service to the Territory, or from a name or word that is significant to the area where the division is located.

While changes to names of divisions are uncommon, the table below shows the divisional names that no longer exist due to being re-named, or in some instances, the division was abolished. Seen in the table below, the divisional names of Nhulunbuy and Stuart were replaced with Mulka and Gwoja respectively as a result of the 2019 Electoral Boundary Redistribution, and were used for the first time at the 2020 Territory Election.

Name	Election years when name applied												
	1974	1977	1980	1983	1987	1990	1994	1997	2001	2005	2008	2012	2016
Alice Springs													
Berrimah													
Eley													
Flynn													
Gillen													
Greatorex													
Jingili													
Koolpinyah													
Leanyer													
Ludmilla													
MacDonnell													
Millner													
Nhulunbuy													
Palmerston													
Sadadeen													
Stuart													
Stuart Park													
Tiwi													
Victoria River													
Wagaman													

A number of current divisions are named after a suburb that while still currently relevant to that division, may change as a result of boundary changes. These divisions are: Araluen, Braiiting, Casuarina, Fannie Bay, Karama, Nightcliff and Wanguri.

**The Redistribution Committee encourages suggestions for new names from the public**, in particular for the listed divisions above, during the suggestion period.

## The redistribution process

The redistribution of electoral boundaries is an impartial and transparent process, which should be free of political interference and provide several opportunities for public participation.

The main actions of the redistribution are:

Action	Description	Legislation
Public suggestions invited	The committee invites suggestions from the public of changes to electoral boundaries (including name changes) that will assist in achieving the object of redistribution. The suggestion period is for 30 days.	Section 141
Public comment invited on the suggestions received	The committee publishes the suggestions received on the NT Electoral Commission's (NTEC's) website at the end of the suggestion period. The committee then invites public comment on the suggestions received. The comment period is for 14 days.	Section 142
Preparing the first proposed redistribution	The committee considers the public suggestions and comments received on those suggestions and prepares a first proposed redistribution, or draft boundaries, of the NT into divisions. This includes proposed names of divisions.	Section 143
First proposed redistribution released	Once the committee has finalised the first proposed distribution, this is released in the form of a report and a series of maps published on the NTEC's website (with hardcopies also available).	Section 144
Objections to the first proposed redistribution invited	Upon release of the first proposed redistribution, the committee invites objections from the public to the draft boundaries and proposed names. The objection period is for 30 days.	Section 145
Preparing the second proposed redistribution	The committee considers the public objections received concerning the first proposed redistribution, which may include further correspondence with the person/group who made the objection. The committee then prepares a second proposed redistribution, or amended draft boundaries. The second proposed redistribution should also include any adjustments required as a result of re-calculating the quota after the receipt of objections.	Section 145A

Second proposed redistribution released	Once the committee has finalised the second proposed distribution, this is released in the form of a report and a series of maps published on the NTEC's website (with hardcopies also available).	N/A
Objections to the second proposed redistribution invited (if required)	The committee is <i>required</i> to invite objections to the second proposed redistribution if boundary changes add 15% of the total number of electors to a division, or remove more than 15% of the total electors from a division when compared to the first proposed redistribution. The committee <i>may</i> invite objections to the second proposed redistribution if there is a significant change to some of the 'matters to be considered' that has been accommodated in the amended draft boundaries. The second objection period is for 14 days.	Section 145B
Preparing final redistribution	The committee considers public objections received if there was a second objection period, and decides on the final electoral boundaries and names.	Section 146
Notice of redistribution and final report and maps released	The committee declares the distribution of the NT into divisions (including names of divisions) via a Gazette notice. A final report and series of maps is also published on the NTEC's website (with hardcopies also available). The final report must include: the details of the suggestions, comments and objections received; reasons behind boundary decisions, and whether a second objection was conducted and reason why.	Sections 147, 148

## Redistribution timeline

The 2023 NT Electoral Boundary Redistribution officially commenced on 22 February 2023 with the establishment of the Redistribution Committee. The public consultation periods for the 2023 redistribution are being repeated as they did not meet statutory requirements when conducted earlier in the year. The revised timeline is provided below:

Stage of redistribution process	Indicative dates
Invite public suggestions	Monday 11 September 2023
Public suggestions close (30 days)	Wednesday 11 October 2023
Invite comments on suggestions	Thursday 12 October 2023
Comments on suggestions close (14 days)	Thursday 26 October 2023
First proposed redistribution published	Monday 30 October 2023
Invite objections against first proposed redistribution	Monday 30 October 2023
Objections to first proposed redistribution close (30 days)	Wednesday 29 November 2023
Redistribute the Territory into divisions (final report)	Early December 2023
Redistribution takes effect at the next general election	24 August 2024 (election day)

## How to make suggestions, comments and objections

The committee invites and encourages any member of the public, or political party, organisation or community group, to provide their input into the redistribution process during the public consultation periods:

- **Suggestions** on possible changes to electoral boundaries and division names.
- **Comments** on the suggestions received.
- **Objections** to the first proposed redistribution.
- **Objections** to the second proposed redistribution (if required).

All input must be in writing and addressed to the Redistribution Committee. Submissions can be made via:

Email: [secretariat.ntec@nt.gov.au](mailto:secretariat.ntec@nt.gov.au)

Website: Have Your Say website:  
[www.haveyoursay.nt.gov.au/2023-nt-electoral-boundary-redistribution](http://www.haveyoursay.nt.gov.au/2023-nt-electoral-boundary-redistribution)

Post: c/o NT Electoral Commission  
GPO Box 2419  
Darwin NT 0801

Hand delivery: c/o NT Electoral Commission  
Level 3, TCG Centre  
80 Mitchell Street  
Darwin

## Data provided

The current electoral boundary maps and latest enrolment statistics by division can be viewed on the NTEC's website at [www.ntec.nt.gov.au](http://www.ntec.nt.gov.au) then by following links to the 2023 NT Electoral Boundary Redistribution.

Data provided on the website includes:

- [Enrolment statistics by Legislative Assembly division – updated monthly](#)
- [Enrolment numbers by Statistical Area Level 1 \(SA1s\) – as at 15 September](#) (.txt file)
- [Digital boundary files \(shapefiles\) from the ABS – includes state electoral divisions](#)
- [Maps of current NT Legislative Assembly electoral boundaries](#)

The website will also be where the **suggestions, comments and objections** will be published. Details of the individuals who make a submission will be listed with just an initial and surname, for example J. Smith.

The **reports and maps** for the first proposed redistribution, the second proposed redistribution, and final redistribution will also be published on the website.

## Appendix A

# Enrolment numbers comparison 2012 – 2022

Division	Enrolment at 2012 Territory Election	Enrolment at 2016 Territory Election	Enrolment at 2020 Territory Election	Enrolment at 15 Sept 2023
	Enrolment	Enrolment	Enrolment	Enrolment
Arafura	5,477	4,848	5,183	6,145
Araluen	4,817	5,850	5,742	5,967
Arnhem	4,902	5,158	5,431	6,171
Barkly	5,137	5,183	5,690	6,069
Blain	4,980	5,576	5,695	6,084
Braitling	4,687	5,998	5,830	6,049
Brennan	5,061	5,204	5,746	6,018
Casuarina	5,031	5,457	5,647	5,827
Daly	5,329	5,386	5,622	6,333
Drysdale	5,178	5,460	5,828	6,447
Fannie Bay	4,879	5,613	5,473	5,526
Fong Lim	4,883	5,353	5,555	5,422
Goyder	5,323	5,587	5,583	6,016
Greatorex	4,606	-	-	-
Gwoja*	4,706	5,242	5,313	5,917
Johnston	4,879	4,983	5,556	5,841
Karama	4,713	5,228	5,482	5,952
Katherine	5,174	5,285	5,749	6,170
Mulka**	4,719	5,895	6,124	7,003
Namatjira***	5,127	5,435	5,728	6,318
Nelson	4,715	5,825	5,505	5,899
Nightcliff	4,797	5,341	5,621	5,808
Port Darwin	4,730	5,281	5,699	5,738
Sanderson	5,100	5,546	5,449	5,438
Spillett	-	5,203	5,863	7,115
Wanguri	4,855	5,569	6,111	6,526
<b>Total</b>	<b>123,805</b>	<b>135,506</b>	<b>141,225</b>	<b>151,799</b>
<b>Quota</b>	<b>4,592</b>	<b>5,420</b>	<b>5,649</b>	<b>6,072</b>

\* Formerly named Stuart (2012, 2016)

\*\* Formerly named Nhulunbuy (2012, 2016)

\*\*\* Formerly named MacDonnell (2012)

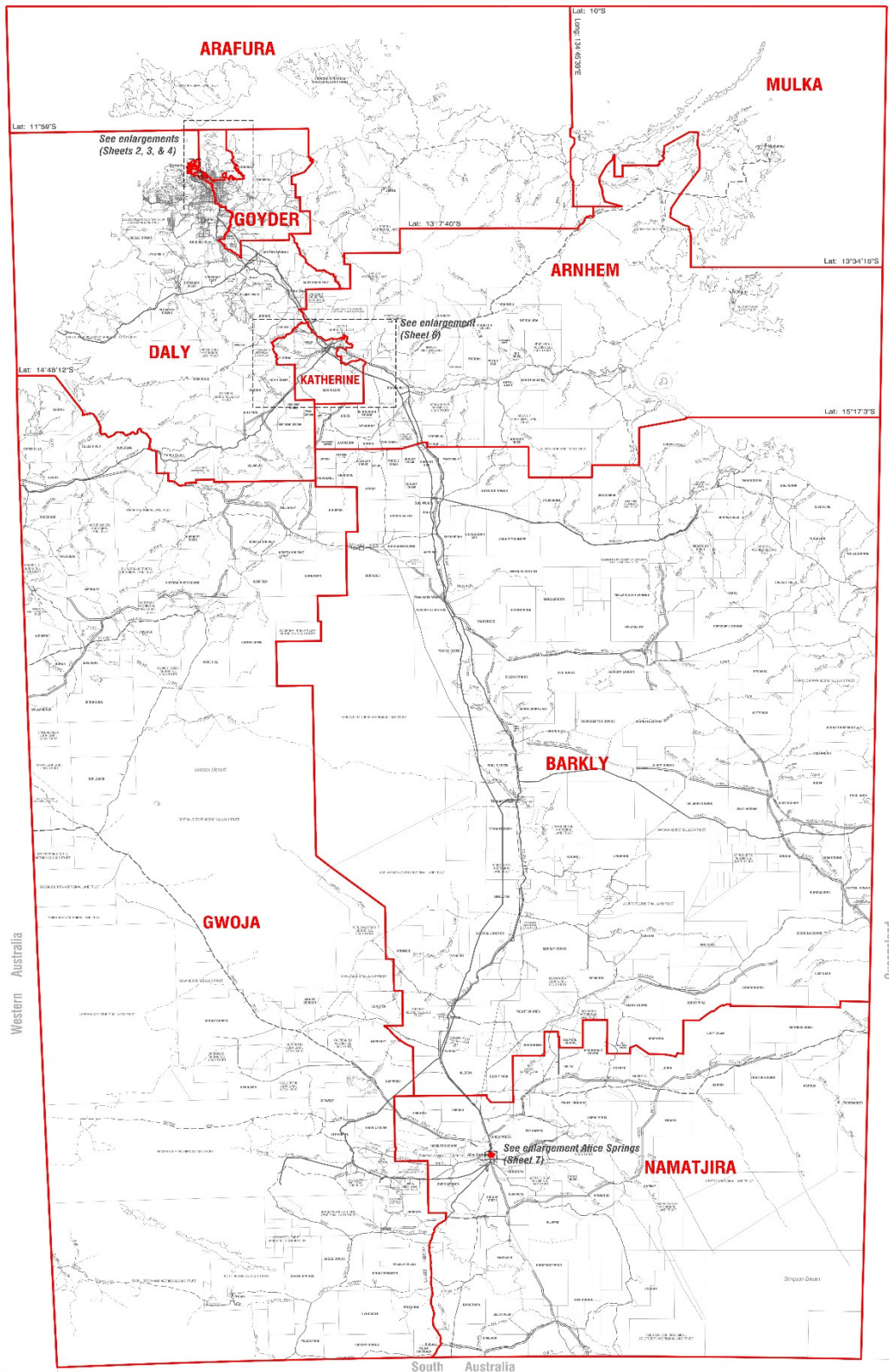
## Appendix B

# Enrolment and variance from the quota

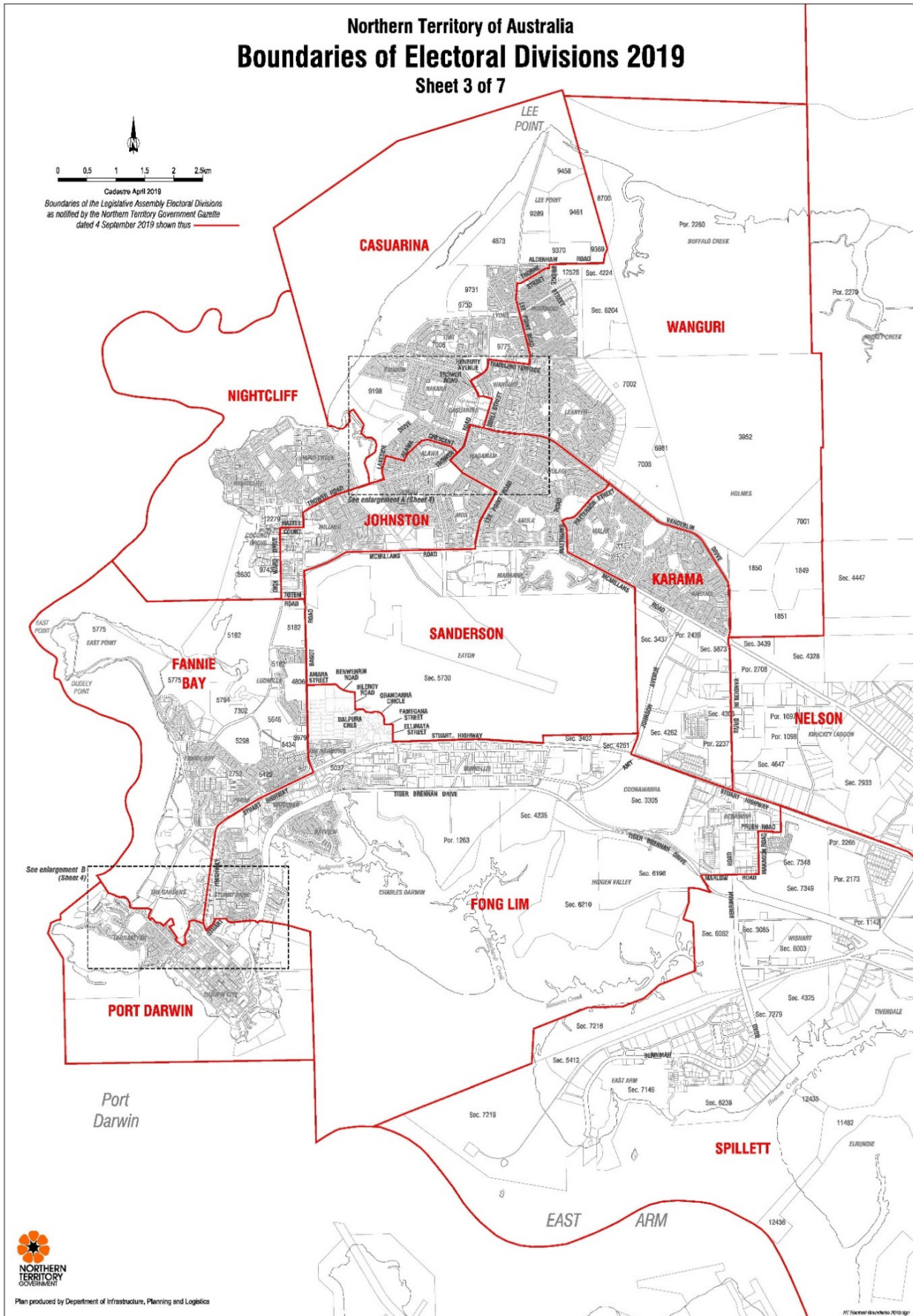
Enrolment and variance from quota as at 15 September 2023		
Division	Enrolment	Variance %
Arafura	6,145	1.2
Araluen	5,967	-1.7
Arnhem	6,171	1.6
Barkly	6,069	-0.05
Blain	6,084	0.2
Braitling	6,049	-0.4
Brennan	6,018	-0.9
Casuarina	5,827	-4.0
Daly	6,333	4.3
Drysdale	6,447	6.2
Fannie Bay	5,526	-9.0
Fong Lim	5,422	-10.7
Goyder	6,016	-0.9
Gwoja	5,917	-2.6
Johnston	5,841	-3.8
Karama	5,952	-2.0
Katherine	6,170	1.6
Mulka	7,003	15.3
Namatjira	6,318	4.1
Nelson	5,899	-2.8
Nightcliff	5,808	-4.3
Port Darwin	5,738	-5.5
Sanderson	5,438	-10.4
Spillett	7,115	17.2
Wanguri	6,526	7.5
<b>Total</b>	<b>151,799</b>	
<b>Quota</b>	<b>6,072</b>	

## Appendix C

# Maps showing 2019 (current) Legislative Assembly boundaries





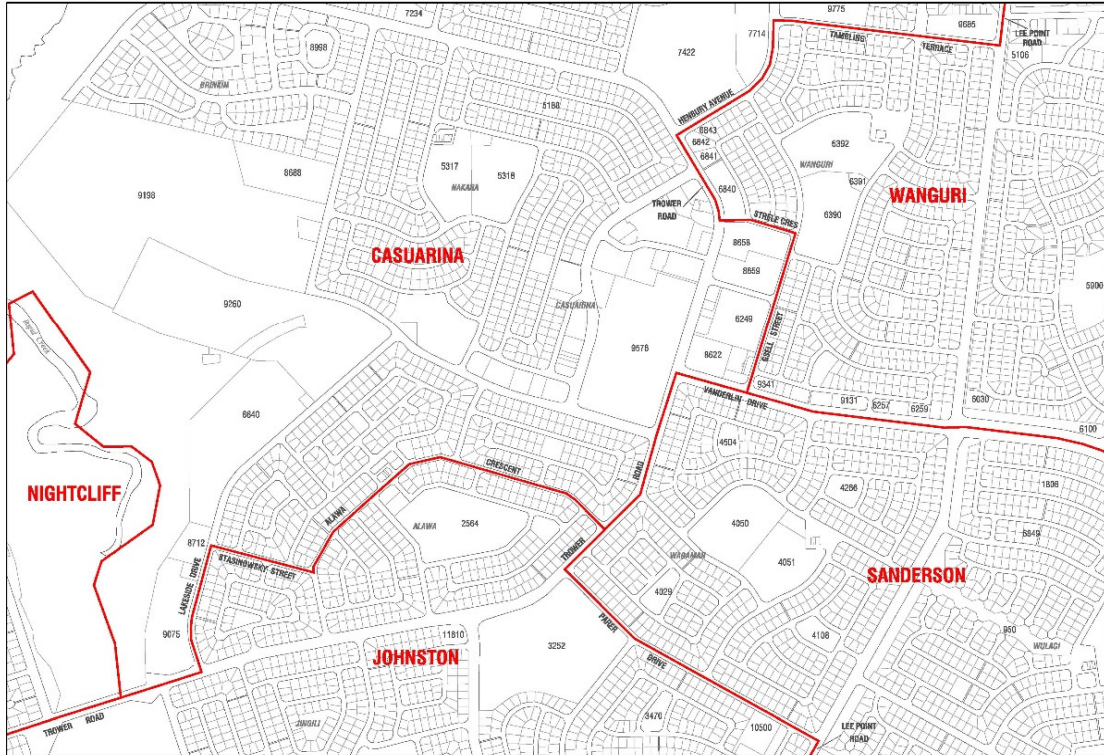


Northern Territory of Australia  
**Boundaries of Electoral Divisions 2019**  
Sheet 4 of 7



Cadastral April 2019  
Boundaries of the Legislative Assembly Electoral Divisions  
as notified by the Northern Territory Government Gazette  
dated 4 September 2019 shown thus

Enlargement A (not to scale)



Enlargement B (not to scale)

