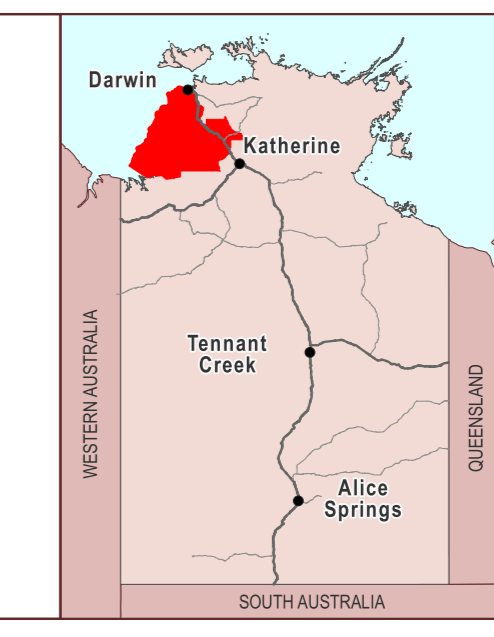


# Northern Territory Electoral Boundary 2023

**DALY**



Land Tenure		Other	
<span style="display:inline-block; width:10px; height:10px; background-color:orange;"></span>	Aboriginal Land (Scheduled under ALRA)	<span style="display:inline-block; width:10px; height:10px; border:1px solid red;"></span>	Electoral Boundary
<span style="display:inline-block; width:10px; height:10px; background-color:lightblue;"></span>	Aboriginal Land (NT enhanced freehold)	<span style="display:inline-block; width:10px; height:10px; border:1px solid black;"></span>	Cadastre (St Numbers/Parcel Labels)
<span style="display:inline-block; width:10px; height:10px; background-color:lightgreen;"></span>	Crown Lease		
<span style="display:inline-block; width:10px; height:10px; background-color:lightyellow;"></span>	Freehold		
<span style="display:inline-block; width:10px; height:10px; background-color:lightpurple;"></span>	Pastoral Lease		
<span style="display:inline-block; width:10px; height:10px; background-color:lightpink;"></span>	Reserve		
<span style="display:inline-block; width:10px; height:10px; background-color:lightblue;"></span>	Vacant Crown Land		
<span style="display:inline-block; width:10px; height:10px; background-color:lightpurple;"></span>	Other		



**GDA**

The Northern Territory of Australia does not warrant that the product or any part of it is correct or complete and will not be liable for any loss, damage or injury suffered by any person as a result of its inaccuracy or incompleteness.

You are encouraged to notify any error or omission in the material by emailing [landinfo@nt.gov.au](mailto:landinfo@nt.gov.au)

Map prepared by:  
Geospatial Services, Land Information,  
Department of Infrastructure, Planning and Logistics

Date of Cadastre: 11/03/2024