

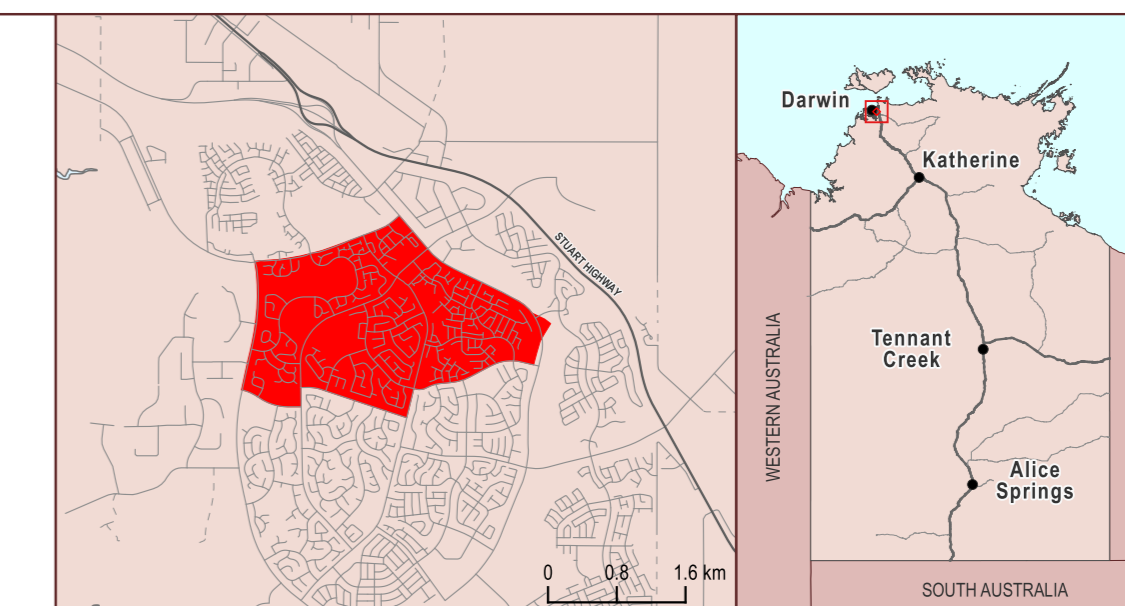
Northern Territory Electoral Boundary 2023

**DRYSDALE**



Legend

- |   |  |
|---|--|
| <span style="display:inline-block; width:10px; height:10px; background-color:yellow; border:1px solid black;"></span> Land Tenure                               | <span style="display:inline-block; width:10px; height:10px; border:2px solid red;"></span> Other                                 |
| <span style="display:inline-block; width:10px; height:10px; background-color:lightblue; border:1px solid black;"></span> Aboriginal Land (Scheduled under ALRA) | <span style="display:inline-block; width:10px; height:10px; border:1px solid black;"></span> Electoral Boundary                  |
| <span style="display:inline-block; width:10px; height:10px; background-color:lightblue; border:1px solid black;"></span> Aboriginal Land (NT enhanced freehold) | <span style="display:inline-block; width:10px; height:10px; border:1px solid black;"></span> Cadastre (St Numbers/Parcel Labels) |
| <span style="display:inline-block; width:10px; height:10px; background-color:yellow; border:1px solid black;"></span> Crown Lease                               |  |
| <span style="display:inline-block; width:10px; height:10px; background-color:yellow; border:1px solid black;"></span> Freehold                                  |  |
| <span style="display:inline-block; width:10px; height:10px; background-color:yellow; border:1px solid black;"></span> Pastoral Lease                            |  |
| <span style="display:inline-block; width:10px; height:10px; background-color:yellow; border:1px solid black;"></span> Reserve                                   |  |
| <span style="display:inline-block; width:10px; height:10px; background-color:yellow; border:1px solid black;"></span> Vacant Crown Land                         |  |
| <span style="display:inline-block; width:10px; height:10px; background-color:yellow; border:1px solid black;"></span> Other                                     |  |



**GDA**

The Northern Territory of Australia does not warrant that the product or any part of it is correct or complete and will not be liable for any loss, damage or injury suffered by any person as a result of its inaccuracy or incompleteness. You are encouraged to notify any error or omission in the material by emailing [landinfo@nt.gov.au](mailto:landinfo@nt.gov.au)

Map prepared by:  
Geospatial Services, Land Information,  
Department of Infrastructure, Planning and Logistics  
Date of Cadastre: 11/03/2024