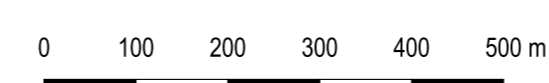


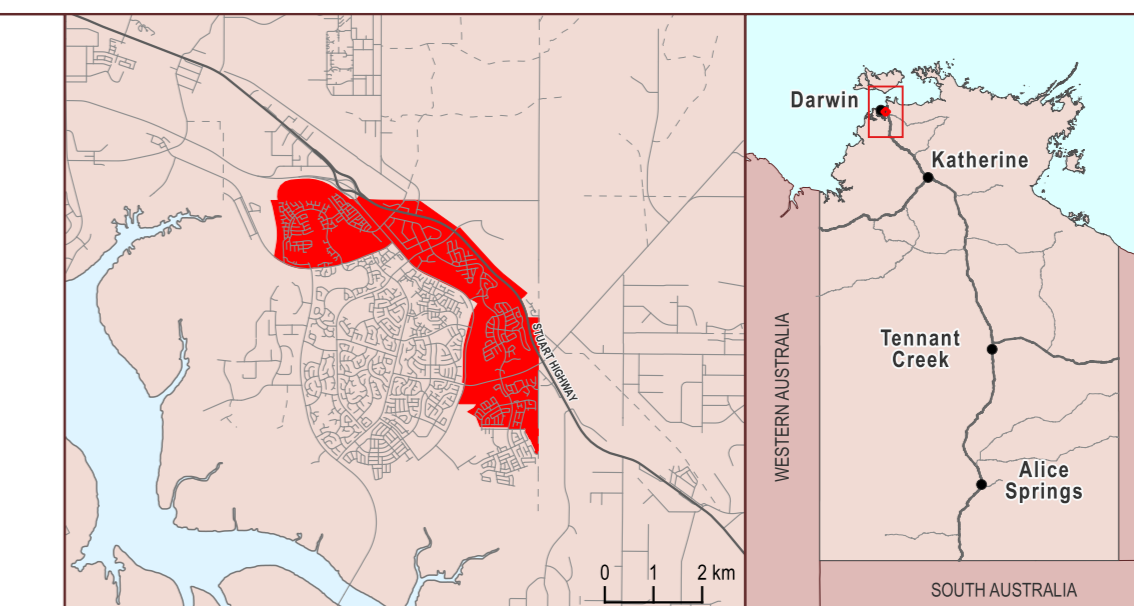
Northern Territory Electoral Boundary 2023

**SPILLET**



Legend

- |  |                                     |
|--|-------------------------------------|
| Land Tenure                            | Other                               |
| Aboriginal Land (Scheduled under ALRA) | Electoral Boundary                  |
| Aboriginal Land (NT enhanced freehold) | Cadastre (St Numbers/Parcel Labels) |
| Crown Lease                            |                                     |
| Freehold                               |                                     |
| Pastoral Lease                         |                                     |
| Reserve                                |                                     |
| Vacant Crown Land                      |                                     |
| Other                                  |                                     |



The Northern Territory of Australia does not warrant that the product or any part of it is correct or complete and will not be liable for any loss, damage or injury suffered by any person as a result of its inaccuracy or incompleteness. You are encouraged to notify any error or omission in the material by emailing [landinfo@nt.gov.au](mailto:landinfo@nt.gov.au)

Map prepared by:  
Geospatial Spatial Services, Land Information,  
Department of Infrastructure, Planning and Logistics  
Date of Cadastre: 11/03/2024