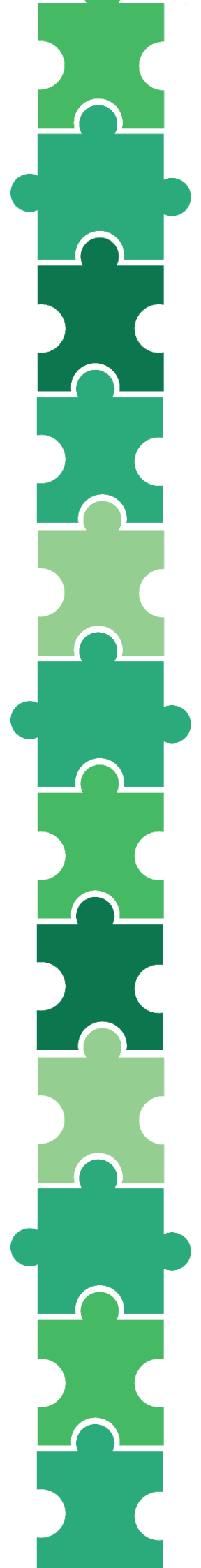




2023

NT Electoral
Boundary Redistribution

Report on the first proposed redistribution of the Northern Territory into divisions



© 2023. This publication is copyright.

No part may be reproduced by any process without written permission from the Chairperson of the Redistribution Committee, except that permission is given for the use and reproduction of statistics included in this publication.

Produced by the Redistribution Committee
GPO Box 2419, Darwin NT 0801

DARWIN

Level 3
TCG Centre
80 Mitchell Street
Darwin NT 0800

Phone: 08 8999 5000

Fax: 08 8999 7630

Email: secretariat.ntec@nt.gov.au

Website: ntec.nt.gov.au

Documented updated: 23/5/2023 2:52 PM



2023 NT Electoral Boundary Redistribution

First proposed redistribution of Legislative Assembly divisions

The Redistribution Committee has undertaken a first proposed redistribution of the Northern Territory into divisions for the Legislative Assembly in accordance with Part 8 of the [Electoral Act 2004](#).

The committee's report is available to the public along with maps showing the names and boundaries of the first proposed divisions, in compliance with section 144 of the *Electoral Act 2004*.

As part of the redistribution process, the committee invited suggestions and comments and made those submissions publicly available. The key stages of the redistribution process leading to this report were:

- Inviting suggestions from the public regarding possible changes to the names and boundaries of the Territory's electoral divisions
- Making the suggestions received available for public inspection
- Inviting comments from the public on the suggestions received
- Proposing a first redistribution of the Northern Territory into electoral divisions
- Preparing maps for the first proposed redistribution showing the names and boundaries of all proposed divisions, which are available for public inspection.

The committee now invites objections to the first proposed redistribution. Objections must be made in writing to the Redistribution Committee by close of business on Friday, 23 June 2023. Details on how to lodge an objection are shown at section 6 of this report.

The timing of this first proposed redistribution coincides with expanded remote enrolment programs conducted by the Australian Electoral Commission (AEC) in the lead up to the constitutional referendum. If these programs lead to significant increases in enrolment in remote divisions, this will impact electoral boundaries and likely necessitate a second objection period.

The committee wishes to thank the Department of Infrastructure, Planning and Logistics (DIPL) for the supply and licensing of MapInfo, the mapping software system used to model possible boundary changes, and the supply of spatial layers to assist with this modelling. The committee would also like to acknowledge the work of DIPL staff in their timely production of the digital maps that accompany this report.

The committee thanks the Victorian Electoral Commission for the supply of its redistribution modelling application Boundary Maker at no cost, which is used in conjunction with MapInfo.

Trevor Riley
Chair, Redistribution Committee
23 May 2023

Content

Glossary	1
1: Background	3
1.1 2023 NT Electoral Boundary Redistribution	3
1.2 The Redistribution Committee	3
1.3 The legislation	3
1.4 Object, principles and matters to be considered	4
1.5 The redistribution process	4
2. Public consultation – suggestions and comments	6
2.1 Public consultation periods	6
2.2 Public consultation activities	6
2.3 Public suggestions received	6
2.4 Details of public suggestions received	7
2.5 Public comments on the suggestions received	11
2.6 Details of public comments on the suggestions received	12
3. Considerations and issues	13
3.1 Enrolment in the Northern Territory	13
3.2 Data and systems	14
3.3 The quota of electors	16
3.4 Community of interests	16
3.5 2019 NT Electoral Boundary Redistribution	17
3.6 Main issues of consideration for 2023	18
3.7 Methodology for determining first proposed redistribution	19
4. Division names	21
4.1 Legislation and convention	21
4.2 Suggestions received regarding division names	21
4.3 Determination of the committee regarding changes to division names	22
5. The first proposed redistribution	23
5.1 Proposal for the Darwin suburbs region - refer to Maps 2, 3 and 4 in Appendix A.	23
5.2 Proposal for the Palmerston and Darwin rural regions - refer to Maps 2 and 5 in Appendix A.	28
5.3 Proposal for the remote north and Katherine divisions - refer to Maps 1 and 6 in Appendix A.	32
5.4 Proposal for the Central Australia divisions - refer to Maps 1 and 7 in Appendix A.	34
6. Publication of first proposed redistribution	37
6.1 Publication	37
6.2 Key proposals	37
6.3 Objection period and lodgement arrangements	38
Appendix A	39
Series of 7 maps	39
Appendix B	46
Current and proposed division enrolment and variance from quota	46
Appendix C	47
Summary of proposed transfers across divisional boundaries	47

Glossary

ABS	Australian Bureau of Statistics: federal agency responsible for the collection, collation and dissemination of statistics relating to the Australian community, including population data.
AEC	Australian Electoral Commission: federal agency responsible for managing the electoral roll and supplying roll products to the Northern Territory Electoral Commission.
APPOINTED MEMBER	See Chairperson
BOUNDARIES	The external borders of an electoral division created for the election of a member to the Northern Territory's Legislative Assembly.
CHAIRPERSON	The Chairperson is the appointed member of the Redistribution Committee. The person must have served as, or is qualified for appointment as, a Supreme Court Judge or Local Court Judge, cannot be a member of a political party and cannot have recent political affiliation. The Chairperson is appointed by the Administrator.
COMMITTEE	See Redistribution Committee
COMMENTS	After receiving suggestions about changes to electoral boundaries from the public, the Redistribution Committee invites comments from the public on these suggestions.
CONSTITUTIONAL REFERENDUM	A public vote to change the Australian Constitution. Scheduled for October 2023, Australians will be required to vote whether "to alter the Constitution to recognise the First Peoples of Australia by establishing an Aboriginal and Torres Strait Islander Voice". This constitutional referendum is also being referred to as the Voice referendum.
DIVISION	An electoral area represented by a Member of the Legislative Assembly, commonly called an electorate. There are 25 divisions in the Northern Territory, each represented by one member.
FIRST PROPOSED REDISTRIBUTION	The Redistribution Committee considers suggestions and comments on these suggestions from the public and prepares a first proposed redistribution of the Territory into divisions with proposed names. This is presented as a report and maps. The public is then invited to communicate its objections to any of the proposed boundaries and names.
MLA	Member of the Legislative Assembly
NT	Northern Territory
NTEC	Northern Territory Electoral Commission
NTG	Northern Territory Government
OBJECT OF REDISTRIBUTION	At the time of the next general election, the number of electors in each proposed division is as near to equal as practicable (s139 of the <i>Electoral Act 2004</i>).
OBJECTIONS	The public is invited to submit objections to the first and second proposed boundaries and/or the names of divisions.
QUOTA	The average number of electors across all 25 divisions. This is calculated by dividing the total number of electors in the Northern Territory by the number of members to be elected.
REDISTRIBUTION COMMITTEE	An independent 4 person committee responsible for managing the redistribution process. The committee consists of the Auditor-General, the Electoral Commissioner, the Surveyor-General, and an appointed member (who is the Chairperson).

Glossary (Cont.)

<p>REDISTRIBUTION REPORT</p>	<p>The Redistribution Committee reviews objections to the first and possible second proposed boundaries and makes final determinations of the electoral boundaries of all 25 divisions.</p> <p>The determinations must be made by <i>Gazette</i> notice and a report presented to the Speaker.</p> <p>The report must:</p> <ul style="list-style-type: none"> (a) include details of all suggestions, comments and objections given or made (b) contain a map or number of maps together showing the names and boundaries of all divisions (c) state the reasons for redistributing the Territory into the divisions set out in the redistribution declaration notice (d) state the reasons that the Redistribution Committee did or did not invite objections on the second proposed redistribution.
<p>SA1s</p>	<p>Statistical Areas Level 1 – the smallest area for which a wide range of Census data is released, with an average population of about 400 (although are generally between (200 – 800). Enrolment numbers per SA1 are used as the base for determining electoral divisions.</p>
<p>SECOND PROPOSED REDISTRIBUTION</p>	<p>The committee considers public objections to the first proposed redistribution and may prepare a second proposed redistribution if there are significant changes to the first proposal. If not, following consideration of the objections to the first proposed redistribution, notice would be given of the final determinations and publication of the redistribution report and maps.</p>
<p>SUBMISSION</p>	<p>The public can lodge 3 types of submissions during the redistribution process: initial <i>suggestions</i>, <i>comments</i> on the suggestions received and <i>objections</i> to the first proposed boundaries for consideration by the Redistribution Committee.</p>
<p>SUGGESTIONS</p>	<p>At the commencement of redistribution proceedings, suggestions are invited from the public about possible division boundary changes in order to achieve the object of redistribution. Suggestions about possible names for divisions are also invited by the Redistribution Committee.</p>

1: Background

1.1 2023 NT Electoral Boundary Redistribution

The Northern Territory (NT) is divided into 25 electoral divisions with each division having one member of the NT's Legislative Assembly to represent the people residing in them.

The boundaries of each division are reviewed every 4 years in the 18 month period prior to the general election for the Legislative Assembly, to see if any changes are required to ensure that the **number of electors in each division is as near to equal as practicable**. This review process, which includes several stages of public consultation, is called a redistribution, as certain areas of the NT and the electors who reside there, may be distributed from one division to another in order to balance the numbers.

Any changes made as a result of the redistribution come into effect at the next general election which will be in August 2024.

1.2 The Redistribution Committee

The redistribution process is managed by the Redistribution Committee (the committee) which consists of the following members:

- Auditor-General
- Electoral Commissioner
- Surveyor-General
- an appointed member – who must be a person who has served as, or is qualified for appointment as, a Supreme Court Judge or Local Court Judge, is not a member of a political party and does not have a recent political affiliation.

The appointed member is the Chairperson of the Redistribution Committee.

1.3 The legislation

That the NT is distributed into electoral divisions for the purposes of electing members of the Legislative Assembly is provided for in section 13 of the [Northern Territory \(Self-Government\) Act 1978](#). This section also includes the process for calculating the quota to be used (i.e. the number of electors that each division should have to be near to equal) and that each division cannot exceed, or fall short of, the quota by more than one fifth (or 20%) of the quota.

The timeline and processes under which the redistribution is to be conducted are set out in Part 8 of the NT's [Electoral Act 2004](#). This section also includes the object, principles and matters to be considered (detailed over the page) that the committee must comply with in its deliberations.

Part 16 of the [Electoral Act 2004](#) provides for the establishment and composition of the Redistribution Committee as well as its functions, powers and procedures.

1.4 Object, principles and matters to be considered

Object of redistribution

The *Electoral Act 2004* distinguishes a single primary objective for the redistribution, being that, at the time of the next general election, the number of electors in each proposed division is as near to equal as practicable (s 139).

Principles of redistribution

The *Electoral Act 2004* also provides guiding principles that the committee is to have regard to in seeking to achieve the object of redistribution (s 139A).

These principles are:

- (a) the physical area of a division that has both rural and remote areas should be as small as practicable
- (b) the demographic characteristics of a division should be as uniform as practicable
- (c) the geographic features of a division should be as uniform as practicable
- (d) each identifiable community should be included in only one division if practicable
- (e) subject to (a) to (d), changes to existing divisions should minimise the number of electors being transferred from one division to another.

Matters to be considered in redistribution

The *Electoral Act 2004* also provides further matters to be considered by the committee in trying to achieve the object of redistribution (s140). The first matter reinforces section 13 of the *Northern Territory (Self Government) Act 1978*, by which the committee must ensure the number of electors in each division does not exceed or fall short of the quota by one fifth of the quota.

In addition, the legislation states that the committee must give proper consideration to the following:

- (a) communities of interests in each proposed division, including economic, social and regional interests
- (b) types of communication and travel in each proposed division, in particular the disadvantages arising out of remoteness or distance
- (c) population trends in the Territory
- (d) the density of population in each proposed division
- (e) the area of each proposed division
- (f) the physical features of each proposed division
- (g) the existing boundaries of the following:
 - (i) divisions
 - (ii) local government areas and wards, as well as suburbs and towns
 - (iii) federal electoral divisions or subdivisions
 - (iv) Aboriginal land council areas.
- (h) all suggestions and comments from the public.

1.5 The redistribution process

The redistribution of electoral boundaries is an impartial and transparent process, which should be free of political interference and provide several opportunities for public participation.

The redistribution process will take approximately 6 – 8 months and involves a number of public consultation periods and reports. The main actions and timeline of the redistribution are listed in the table over the page.

Table 1: Process and timeline for the 2023 NT Electoral Boundary Redistribution

Action	Description	Timeline
Public suggestions invited	The committee invites suggestions from the public of changes to electoral boundaries (including name changes) that will assist in achieving the object of redistribution.	22 February – 27 March 2023
Public comments on the suggestions received invited	The committee publishes the suggestions received on the NTEC website at the end of the suggestion period. The committee then invites public comment on the suggestions received.	28 March – 11 April 2023
Preparing the first proposed redistribution	The committee considers the public suggestions and comments and prepares a first proposed redistribution, or draft boundaries, of the NT into divisions. This includes proposed names of divisions.	12 April – 23 May 2023
First proposed redistribution released	Once the committee has finalised the first proposed distribution, this is released in the form of a report and a series of maps published on the NTEC's website (with hardcopies also available).	23 May 2023
Objections invited for first proposed redistribution	Upon release of the first proposed redistribution, the committee invites objections from the public to the draft boundaries and proposed names.	23 May – 23 June 2023
Preparing a second proposed redistribution	The committee considers the public objections received for the first proposed redistribution, which may include further correspondence with the person/group who made the objection. The committee may prepare a second proposed redistribution (before making any final determinations) if it makes significant changes compared to the first proposal. Adjustments may be necessary as a result of re-calculating the quota after the receipt of objections.	23 June – early-mid August 2023
Second proposed redistribution released	Once the committee has finalised the second proposed distribution, this is released in the form of a report and a series of maps published on the NTEC's website (with hardcopies also available).	Early-mid August 2023
Objections to the second proposed redistribution invited (if required)	The committee is <i>required</i> to invite objections to the second proposed redistribution if boundary changes add 15% of the total number of electors to a division, or remove more than 15% of the total electors from a division when compared to the first proposed redistribution. The committee <i>may</i> invite objections to the second proposed redistribution if there is a significant change to some of the 'matters to be considered' that has been accommodated in the amended draft boundaries.	Likely to close late August
Preparing final redistribution	The committee considers public objections received if there was a second objection period, and decides on the final electoral boundaries and names.	September
Notice of redistribution and final report and maps released	The committee declares the distribution of the NT into divisions (including names of divisions) via a Gazette notice. A final report and series of maps is also published on the NTEC's website (with hardcopies also available). The final report must include: the details of the suggestions, comments and objections received, reasons behind boundary decisions, and whether a second objection was conducted and reason why.	Late September

2. Public consultation – suggestions and comments

2.1 Public consultation periods

There are 3 public consultation periods during the redistribution process with a possible fourth:

- Invitation for **suggestions** from the public at the start of the process about possible changes to electoral boundaries or names. The period for suggestions is open for 4 weeks.
- The suggestions received are published online and the public is invited to provide **comments** on any of the suggestions received. The period for comments is open for 2 weeks.
- Once the first proposed redistribution is released by the committee, the public is invited to submit **objections** to any of the proposals. The period for objections is open for 4 weeks.
- If a second proposed boundaries is released, the committee may invite objections to the second proposals. The second period for objection is open for 2 weeks.

2.2 Public consultation activities

An information guide and website were developed for the 2023 NT Electoral Boundary Redistribution and made available through the NTEC website, along with enrolment data, mapping data and other information and resources. The guide and website were launched 10 February 2023 ahead of the invitation for suggestions opening on 22 February 2023.

The invitation for suggestions from the public, and the comments on suggestions, were communicated through a number of channels:

- website
- advertisements in the NT News, Katherine Times and Alice Springs News
- social media posts on Facebook, Instagram and LinkedIn
- media releases
- Have Your Say website
- Direct email to over 200 stakeholders including current MLAs, registered political parties, local councils, peak organisations, Aboriginal corporations and individuals who made submissions to the 2019 redistribution or signed up to the mailing list.

2.3 Public suggestions received

The invitation for suggestions from the public about possible boundary and name changes was open from 22 February to 27 March 2023.

17 suggestions from the public were received. Of these:

- 2 were from political parties (Country Liberal Party and Territory Labor) considering all 25 divisions
- 8 were from current members of the Legislative Assembly mostly considering the electoral division they represent
- 2 were from council representatives (one from council members, one from a council's mayor) considering the division/s that cover their council areas
- 2 were from individuals considering all 25 divisions
- 1 was from an individual considering multiple divisions across Darwin and its northern suburbs
- 1 from an individual considering the division in which they reside
- 1 from an individual with a suggested name change only.

2.4 Details of public suggestions received

Table 3 summarises the suggestions received that considered all 25 divisions and is grouped into regions. Table 2 defines these regions.

Table 4 summarises the remaining submissions that only consider one or a few divisions. Any suggestions regarding division names are summarised in Table 9 in section 4 of this report.

Table 2: Regions and their divisions for redistribution

Region	Divisions included
Central Australia	Araluen, Barkly, Braitling, Gwoja, Namatjira
Remote north and Katherine	Arafura, Arnhem, Daly, Katherine, Mulka
Darwin rural	Goyder, Nelson
Palmerston	Blain, Brennan, Drysdale, Spillett
Darwin suburbs	Casuarina, Fannie Bay, Fong Lim, Johnston, Karama, Nightcliff, Port Darwin, Sanderson, Wanguri

Table 3: Public suggestions received that considered all 25 divisions

Suggested by	Region	Suggestions
Country Liberal Party	Central Australia	<ul style="list-style-type: none"> No changes to Araluen, Barkly, Braitling and Namatjira. Gwoja to gain electors from southern part of Daly (Victoria Hwy and Timber Creek), most of the rural and remote parts of Katherine and Venn from Arnhem.
	Remote north and Katherine	<ul style="list-style-type: none"> No changes to Arafura, although under quota. Arnhem to lose Tindal to Katherine, Venn to Gwoja and Groote Eylandt to Mulka, but gain the communities of Milingimbi and Ramingining from Mulka, and Lansdowne from Katherine. Daly to lose its southern section (Timber Creek and areas around Victoria Highway) to Gwoja. Katherine to lose most of its rural and remote electors to Gwoja with Lansdowne going to Arnhem, but gain the Tindal area from Arnhem. Mulka to gain Groote Eylandt from Arnhem, but lose the communities of Milingimbi and Ramingining to Arnhem.
	Darwin rural	<ul style="list-style-type: none"> No changes to Goyder and Nelson.
	Palmerston	<ul style="list-style-type: none"> No changes to Blain, Brennan and Drysdale. Spillett to lose industrial areas including Northcrest and Yarrowonga, as well as Durack Heights, to Fong Lim.
	Darwin suburbs	<ul style="list-style-type: none"> Casuarina to gain Wanguri suburb and part of Leanyer from Wanguri, but lose Lee Point, Lyons and its small section of Muirhead to Wanguri, and its section of Alawa to Johnston. Fannie Bay to gain The Narrows and residential part of Eaton from Fong Lim.

		<ul style="list-style-type: none"> • Johnston to gain rest of Alawa from Casuarina, but lose a section of Millner to Nightcliff. • Fong Lim to gain industrial areas including Northcrest and Yarrowonga, as well as Durack Heights from Spillett, and lose The Narrows and Eaton residential area to Fannie Bay. • Karama to lose its Berrimah section to Sanderson. • Nightcliff to gain section of Millner from Johnston. • No changes to Port Darwin. • Sanderson to gain Karama’s Berrimah section. • Wanguri to lose Wanguri suburb and part of Leanyer to Casuarina, but gain Lee Point, Lyons and small section of Muirhead from Casuarina.
Territory Labor	General	<ul style="list-style-type: none"> • As no division is outside 20% permitted variance, no changes warranted to any division.
	Central Australia	<ul style="list-style-type: none"> • No changes to Araluen and Braitling. • No changes to Barkly, Gwoja and Namatjira although under quota, to ensure strong representation.
	Remote north and Katherine	<ul style="list-style-type: none"> • No changes to Arnhem, Daly and Katherine. • Arafura to gain Ramingining community from Mulka. • Mulka to lose Ramingining community to Arafura.
	Darwin rural	<ul style="list-style-type: none"> • No changes to Goyder and Nelson.
	Palmerston	<ul style="list-style-type: none"> • Blain to gain rest of Rosebery from Brennan. • Brennan redrawn to take in eastern Palmerston gaining Johnston, Zuccoli and Mitchell from Spillett, and losing Gunn and Farrar to Spillett. • Drysdale to gain remaining section of Moulden from Blain and to lose Palmerston City to Spillett. • Spillett to lose part of Berrimah including Northcrest to Fong Lim, and Johnston, Zuccoli and Mitchell to Brennan, and gain Palmerston City from Drysdale.
	Darwin suburbs	<ul style="list-style-type: none"> • No changes to Johnston, Karama, Nightcliff, Sanderson. • Casuarina to gain further section of Muirhead (just south of Thorne St) from Wanguri. • Fannie Bay to gain a small section of Darwin City (northwest of Daly St) from Port Darwin. • Fong Lim to gain section of Berrimah including Northcrest from Spillett. • Port Darwin lose small section of Darwin City (northwest of Daly St) to Fannie Bay. • Wanguri to lose small section of Muirhead (just south of Thorne St) to Casuarina.
B. Close	Central Australia	<ul style="list-style-type: none"> • No changes to Araluen, Braitling or Namatjira. • Barkly to gain 200 electors from Gwoja. • Gwoja to gain 700 electors from Daly and lose 200 to Barkly.

	Remote north and Katherine	<ul style="list-style-type: none"> • No changes to Arnhem. • Arafura to gain 600 electors from Mulka. • Daly to gain 100 electors from Katherine and 400 from Goyder. • Katherine to lose 100 electors to Daly. • Mulka to lose 600 electors to Arafura.
	Darwin rural	<ul style="list-style-type: none"> • Goyder to gain 200 electors from Spillett and 200 from Arafura, and lose 400 electors to Daly.
	Palmerston	<ul style="list-style-type: none"> • No changes to Blain or Brennan • Drysdale to lose 200 electors to Spillett. • Spillett to gain 200 voters from Drysdale and lose 1,000 electors to Fong Lim.
	Darwin suburbs	<ul style="list-style-type: none"> • Casuarina to gain 400 electors from Wanguri and lose 200 electors to Nightcliff and 100 to Johnston. • Fannie Bay to gain 400 electors from Fong Lim. • Fong Lim to gain 1,000 electors from Spillett and lose 400 to Fannie Bay and 300 to Sanderson. • Johnston to gain 100 electors from Casuarina. • Karama to gain 200 electors from Wanguri. • Nightcliff to gain 200 electors from Casuarina. • Sanderson to gain 300 electors from Fong Lim. • Wanguri to lose 400 electors to Casuarina and 200 to Karama.
M. Gordon	Central Australia	<ul style="list-style-type: none"> • No changes to Araluen, Braitling or Namatjira. • Barkly redrawn to lose southern section (south of Tennant Creek) to Gwoja, but gain northern section of Gwoja (from Tanami Desert north) and potentially part of Daly so that it reaches the eastern and western borders of the NT. • Gwoja redrawn to retain the south west section of the NT (as far north as Tanami Desert) then gain southern section of Barkly (south of Tennant Creek) so that it reaches the eastern and western borders of the NT.
	Remote north and Katherine	<ul style="list-style-type: none"> • Mulka to lose electors to Arafura and Arnhem which are under quota. • As Katherine is growing it could lose electors to Gwoja and Barkly to boost their elector numbers
	Darwin rural	<ul style="list-style-type: none"> • No changes to Goyder or Nelson.
	Palmerston	<ul style="list-style-type: none"> • Blain, Brennan and Drysdale could lose electors to Spillett as slightly over quota. • Spillett to lose electors to under quota divisions nearby: Fannie Bay, Fong Lim, Johnston and Nightcliff.
	Darwin	<ul style="list-style-type: none"> • Wanguri to lose electors to under quota divisions nearby: Casuarina, Karama, Sanderson and Johnston.

Table 4: Public suggestions received that considered only one or a few divisions

Suggested by	Divisions	Suggestion
Y.M. Guyula MLA (Member for Mulka)	Mulka, Arnhem	<ul style="list-style-type: none"> • Currently well over quota but worker population at the refinery to decrease significantly over the next 4 years. • All Yolngu country should be in one division. Gapuwiyak and surrounding homelands is the only Yolngu group outside the division of Mulka. • Moving Gapuwiyak from Arnhem to Mulka would result in consistency across all 3 levels of government and land council jurisdiction.
R. Lambley MLA (Member for Araluen)	Araluen, Braitling, Gwoja, Namatjira	<ul style="list-style-type: none"> • Gwoja to gain 300-400 urban electors from Araluen and Braitling (150-200 from each) resulting in mixed urban-remote division (similar to Namatjira).
N. Manison MLA (Member for Wanguri)	Wanguri, Casuarina	<ul style="list-style-type: none"> • No changes to Wanguri although over quota, as no forecast growth. • If a reduction of electors needed, suggests the small section of Muirhead in Casuarina be extended to include section between Thorne St and Fuhrmann St.
C. Paech MLA (Member for Gwoja)	Barkly, Gwoja	<ul style="list-style-type: none"> • Minimal to no changes to Barkly or Gwoja. • If more electors needed to get closer to quota, suggests moving communities TiTree, Wilora and Pmara Jutunta from Barkly as they have kinship and language links with, and high mobility between, Gwoja communities.
M. Paterson (Mayor of Alice Springs)	Araluen, Braitling, Namatjira	<ul style="list-style-type: none"> • Town of Alice Springs is currently represented by Araluen and Braitling, with a small section in Namatjira. • Suggests a third Alice Springs division be re-instated to strengthen representation for Alice Springs residents.
K. Purick MLA (Member for Goyder)	Goyder	<ul style="list-style-type: none"> • No changes to Goyder. • If required to gain electors, any changes should retain the rural values and demographics of Goyder.
T. Stockwell	Barkly, Gwoja, Katherine	<ul style="list-style-type: none"> • Electors from Sturt Plateau District should be in a division where the electorate office is accessible in Katherine. • Currently divided across Gwoja and Barkly.
S. Uibo MLA (Member for Arnhem)	Arnhem, Katherine	<ul style="list-style-type: none"> • No significant changes to Arnhem. • Suggests moving small homeland of Jodetluk from Katherine to Arnhem as it has strong family ties to other communities in Arnhem.
West Arnhem Regional Council (elected councillors)	Arafura, Arnhem	<ul style="list-style-type: none"> • Should have one division that includes communities of northwest Arnhem, northeast Arnhem and central Arnhem: Kakadu National Park, Croker and South Goulburn Islands, Gunbalanya, Maningrida (currently in Arafura) plus Milingimbi and Ramingining (currently in Mulka) and Bulman and Beswick (currently in Arnhem) • This division should be called Arnhem.

<p>K. Worden MLA (Member for Sanderson)</p>	<p>Sanderson</p>	<ul style="list-style-type: none"> • No changes to Sanderson although under quota. Still within 10% of quota. • Currently contains 4 complete suburbs positioned around Marrara sports precinct as a central hub. • Development of old KOA Caravan Park site to come, but not before 2024 general election.
<p>J. Wyndham-Kidd</p>	<p>Casuarina Fannie Bay Fong Lim Johnston Karama Nightcliff Port Darwin Sanderson Wanguri</p>	<ul style="list-style-type: none"> • Casuarina to lose its Alawa portion to Johnston, and gain either larger section of Muirhead from Wanguri, or section of Wanguri suburb. • Fannie Bay to gain southern half of Coconut Grove from Nightcliff and Johnston. • Fong Lim to gain the remainder of Berrimah from Karama and Spillett. • Johnston to gain rest of Alawa from Casuarina and lose its portion of Coconut Grove to Fannie Bay. • Karama to gain Marrara, the airport, Holmes and Knuckey Lagoon and lose its section of Berrimah to Fong Lim. • Nightcliff to gain northern portion of Coconut Grove from Johnston but lose the southern portion of same suburb to Fannie Bay. • Port Darwin – no changes. • Sanderson to lose Marrara and airport to Karama and gain portion of Wanguri suburb from Wanguri. • Wanguri to gain Mickett Creek from Nelson and lose further portion of Muirhead or portion of Wanguri suburb to Casuarina, and remainder portion to Sanderson.
<p>D. Young MLA (Member for Daly)</p>	<p>Daly, Gwoja</p>	<ul style="list-style-type: none"> • Remote divisions should not be urbanised or abolished. • Minimal to no changes to Daly. • If required, could move communities of Amanbidji and Bulla from Gwoja to Daly as they have strong kinship, cultural, and transport links to communities in Daly.

2.5 Public comments on the suggestions received

The period to submit public suggestions closed 27 March 2023. The following day, all suggestions received were published on the redistribution webpages and the public was then invited to provide comments on the suggestions received. The period to submit comments on the suggestions received was open from 28 March to 11 April 2023.

Only 3 comments on the suggestions received were submitted and these were published on the redistribution webpages on 12 April.

2.6 Details of public comments on the suggestions received

Table 5: Public comments on the suggestions received

Comments by	Commenting on suggestions by	Comments
B. Close	<p>Country Liberal Party (CLP)</p> <p>Territory Labor Party (ALP)</p>	<ul style="list-style-type: none"> • Agrees with most of the suggestions from the 2 parties • Disagrees with CLP suggestion to move Berrimah portion of Karama to Sanderson. Suggests Sanderson instead gain Winnellie and the Defence Establishment Berrimah from Fong Lim. • Disagrees with the CLP suggestion for Casuarina to lose its portion of Alawa to Johnston, suggests a smaller portion of Alawa instead. • Disagrees with CLP suggestion for Nightcliff to gain a portion of Millner (around Rapid Creek Shopping Centre) from Johnston. • Agrees with CLP suggestion for Gwoja to gain the southern section of Daly (including Timber Creek and areas around Victoria Hwy). • Agrees with ALP suggestion for Mulka to lose community of Ramingining to Arafura. • Also suggests that Arafura should then lose Kakadu National Park (including Coinda but not including Jabiru) to Goyder.
Country Liberal Party	Territory Labor Party	<ul style="list-style-type: none"> • Question the validity of statement “enrolment date from 2020 which the Commission is required to use” • Comments that restricting boundary changes to within defined regions is not justified. • Questions rationale of keeping Labor held urban Darwin divisions under quota and therefore over represented. • Comments that suggested changes to Brennan and Spillett are unnecessary and unjustified.
Y.M. Guyula MLA (Member for Mulka)	<p>Country Liberal Party (CLP)</p> <p>Territory Labor Party (ALP)</p>	<ul style="list-style-type: none"> • Disagrees with CLP suggestion for Mulka to lose Milingimbi and Ramingining communities to Arafura but gain Groote Eylandt. • Comments that this breaks up a homogenous group of Yolngu people to include Anindilyakwa speakers and different cultural groups. • Disagrees with ALP suggestion for Arafura to gain the community of Ramingining from Mulka. • Comments that this would separate the communities of Milingimbi and Ramingining which are strongly connected and essentially one large interconnected community spread over 2 locations.

3. Considerations and issues

3.1 Enrolment in the Northern Territory

The object of the redistribution is that the number of electors in each division is as near to equal as practicable at the next general election.

The Northern Territory electoral roll is managed by the Australian Electoral Commission (AEC) which, as part of a joint roll agreement, supplies the Northern Territory Electoral Commission (NTEC) with roll data.

As at 31 March 2023, the NT (the most under enrolled of the states and territories) had an enrolment rate of 89.4%, with the national enrolment rate being 97.2%. The AEC estimates that the number of eligible electors who are not enrolled in the Territory is approximately 17,500.

Enrolment since the previous Legislative Assembly general election has grown by approximately 7,000 electors and now currently hovers either side of 148,000. There have been a number of electoral events and enrolment activities that have contributed to the increase of the NT's enrolment numbers, in particular elections which often include enrolment stimulation activities beforehand, as well as substantial numbers of declaration votes which result in new and updated enrolments.

The following major electoral events and enrolment activities have taken place since the 2020 Territory Election:

- 2021 federal election
- 2021 Local Government elections
- Legislative Assembly by-elections for the divisions of Daly, Fannie Bay and Arafura
- A significant number of local government by-elections
- Expansion of the AEC's federal direct enrolment update (FDEU) program to include post office boxes and community mail bags (which previously only included electors with a mailing address to a residential property thereby excluding most rural and remote parts of the NT)
- Re-establishment of the AEC's Indigenous Electoral Participation Program in the NT just prior to the 2021 federal election (it was terminated in the NT in 2017), which is now ongoing
- Enrolment stimulation programs linked to the upcoming Voice referendum, particularly those targeted at Aboriginal electors.

While the electoral roll in the NT is growing as a result of the above factors, as well as others, there are still issues with roll accuracy. This is especially the case in remote divisions due to the regular movement of Aboriginal people across division lines, and the common usage of multiple names by Aboriginal people.

The by-election held in March 2023 for the division of Arafura was after the commencement of the redistribution where electoral roll data was provided as at 8 February 2023. This by-election resulted in a significant increase in enrolment in the remote division, which prior to the by-election was 5,563 and 6.2% under quota. However, as at 17 April 2023, when the NTEC received updated electoral roll data, the enrolment for Arafura was 5,838, only 1.2% below the adjusted quota (for the same date).

The impacts on the Territory's enrolment due to current electoral events and activities (including upcoming local government by-elections and referendum linked activities) have been considered by the committee in its first proposed redistribution. The AEC will be conducting a major mail out in June in the lead up to the constitutional referendum targeting unenrolled Aboriginal people in the Northern Territory. This will certainly have an impact on the enrolment in remote divisions. If this mail out, and other activities, lead to significant increases in enrolments in remote divisions, this will impact

electoral boundaries and likely necessitate another objection period with the release of the second proposed redistribution. The outcomes of this and other enrolment activities will be monitored and considered by the committee for the duration of the redistribution process and in the final determinations.

Table 6: Enrolment data for the Northern Territory

Division	Enrolment at 2020 Territory Election	Enrolment as at 3 February 2023	Enrolment as at 17 April 2023	Variance from quota
Arafura	5,183	5,563	5,838	-1.2%
Araluen	5,742	5,931	5,906	-0.1%
Arnhem	5,431	5,889	5,822	-1.5%
Barkly	5,690	5,718	5,626	-4.8%
Blain	5,695	5,944	5,922	0.2%
Braitling	5,830	5,926	5,941	0.5%
Brennan	5,746	5,989	5,983	1.2%
Casuarina	5,647	5,855	5,813	-1.7%
Daly	5,622	6,111	6,086	3.0%
Drysdale	5,828	6,177	6,208	5.0%
Fannie Bay	5,473	5,512	5,509	-6.8%
Fong Lim	5,555	5,607	5,542	-6.2%
Goyder	5,583	5,952	5,904	-0.1%
Gwoja	5,313	5,466	5,410	-8.5%
Johnston	5,556	5,806	5,791	-2.0%
Karama	5,482	5,755	5,752	-2.7%
Katherine	5,749	6,049	6,012	1.7%
Mulka	6,124	6,512	6,452	9.2%
Namatjira	5,728	5,870	5,830	-1.4%
Nelson	5,505	5,845	5,830	-1.4%
Nightcliff	5,621	5,752	5,746	-2.8%
Port Darwin	5,699	5,950	5,882	-0.5%
Sanderson	5,449	5,596	5,556	-6.0%
Spillett	5,863	6,898	6,943	17.5%
Wanguri	6,111	6,515	6,494	9.9%
Total	141,225	148,188	147,798	
Quota	5,649	5,928	5,911	

3.2 Data and systems

In addition to the enrolment data supplied by the AEC, other data and systems are used by the committee to model possible boundary changes.

SA1s – Statistical areas level 1

SA1s are the smallest area for which a wide range of Census data is released, with an average population of about 400 (although SA1s generally cover anywhere between 200 – 800 people). The Australian Bureau of Statistics (ABS) released updated SA1s in 2021 (with the previous update being in 2016) to reflect changes such as new housing developments and altered transport infrastructure. The 2021 update resulted in more SA1s being created (7.5% increase across Australia) and a small number being altered. SA1 data is accessed at no cost through the ABS's website.

Projected enrolment numbers

The Redistribution Committee sought projected enrolment numbers (by SA1) from the ABS as at 24 August 2024, election day for the 2024 Territory Election. Unfortunately these could not be provided in time for the initial public consultation periods due to the high workload of the ABS at the time.

The projected enrolment was supplied on 21 April 2023 by the ABS, and was formulated using enrolment data as at 3 February 2023. The projections only forecast a total enrolment growth of 172 electors across all 25 divisions.

Table 7: Projected enrolment as at election day, 24 August 2024

Division	Enrolment as at 17 April 2023	Projected enrolment 24 August 2024*
Arafura	5,838	5,615
Araluen	5,906	6,041
Arnhem	5,822	5,827
Barkly	5,626	5,669
Blain	5,922	5,818
Braitling	5,941	6,047
Brennan	5,983	5,931
Casuarina	5,813	5,705
Daly	6,086	6,057
Drysdale	6,208	6,053
Fannie Bay	5,509	5,487
Fong Lim	5,542	5,535
Goyder	5,904	5,946
Gwoja	5,410	5,421
Johnston	5,791	5,720
Karama	5,752	5,658
Katherine	6,012	6,013
Mulka	6,452	6,420
Namatjira	5,830	5,907
Nelson	5,830	5,779
Nightcliff	5,746	5,645
Port Darwin	5,882	5,970
Sanderson	5,556	5,460
Spillett	6,943	7,539
Wanguri	6,494	6,707
Total	147,798	147,970
Quota	5,911	5,918

* using current electoral boundaries

Mapping systems

The Redistribution Committee utilises MapInfo software, a desktop geographic information system through a license secured through the Department of Infrastructure, Planning and Logistics (DIPL). DIPL also supplied multiple spatial layers to assist with the modelling process including cadastral and local government boundaries, NT localities and Aboriginal communities, roads and rivers.

A software application called Boundary Maker (supplied by the Victorian Electoral Commission at no cost) was used in conjunction with MapInfo to facilitate the modelling of electoral boundaries. Boundary Maker allows users to model boundary changes then see the resulting change to elector numbers and projected enrolment.

3.3 The quota of electors

With the object of redistribution being that the number of electors in each division be as near to equal as practicable, the quota of electors is the average number of electors across all 25 divisions. This is calculated by dividing the total number of electors in the NT by its 25 divisions.

The quota is calculated twice during the redistribution process. The legislation requires it to be calculated as soon as practicable:

- (a) after the establishment of the Redistribution Committee (3 February 2023)
- (b) after the public objection period for the first proposed redistribution has closed (23 June 2023).

The total number of electors in the NT at 3 February 2023 was 148,188. Therefore the February quota is:

$$\frac{\text{Number of electors}}{\text{Number of divisions}} = \frac{148,188}{25} = 5,927.52 \text{ which equates to } \mathbf{5,928 \text{ electors per division.}}$$

Additionally, the committee may calculate the quota at any other time during the redistribution process if it is of the opinion that calculating the quota would either:

- (a) improve the accuracy of the redistribution; or
- (b) achieve the object of redistribution.

3.4 Community of interests

Section 140 of the *Electoral Act 2004* lists further matters that must be given proper consideration by the committee in determining the redistribution of divisions beyond the object and the principles (listed on page 5 of this report). The first matter to consider is listed as: *community of interests in each proposed division, including economic, social and regional interests.*

The concept of community of interest can be difficult to define, however there are a number of references that have acted as a guide for the committee such as:

- Local government boundaries – external and ward boundaries
- Aboriginal land council boundaries
- Suburb boundaries
- Major roads and linking roads
- Commonality of service providers
- Aboriginal language usage
- School catchment areas
- Appreciation of where people do their shopping and recreation activities.

3.5 2019 NT Electoral Boundary Redistribution

The key considerations of the 2019 Electoral Boundary Redistribution, as listed in the final report (moving from north to south of the Territory), were:

- The growing number of electors in the developing suburbs of Muirhead, Northcrest and Zuccoli in Darwin
- Addressing the low enrolment in remote divisions without making the physical size of the divisions too large
- Large elector growth in the division of Katherine
- Significantly over-quota divisions of Araluen and Braitling in Alice Springs.

The major boundary changes resulting from the 2019 NT Electoral Boundary Redistribution reflect the above issues and are detailed below:

- The suburb of Muirhead was split over 2 divisions, Casuarina and Wanguri, as the division of Wanguri was well over quota and development in Muirhead was ongoing. Casuarina gained a small section of Muirhead from the north-west corner of the suburb.
- The division of Spillett contracted towards Palmerston with Eaton, The Narrows, Winnellie, Charles Darwin, Coonawarra and portions of Berrimah moved to the adjacent divisions of Fong Lim, Karama and Sanderson. Spillett retained the still developing suburbs of Northcrest and Zuccoli and was left under quota to accommodate this elector growth.
- Substantial boundary changes were made to 7 remote divisions, most of which increased the physical size of these divisions, in order to increase elector numbers. Mulka was the only remote division not to receive any boundary changes, but was one of 2 divisions that had a name change (it was formerly named the division of Nhulunbuy).
- The remote division of Arafura gained Kakadu National Park and Jabiru from Arnhem, which resulted in the division being made up entirely of the Tiwi Regional Council area and the West Arnhem Regional Council area.
- The remote division of Arnhem lost Kakadu National Park to Arafura, and gained the suburbs of Tindal and Venn from Katherine, and areas around the communities of Jilkminggan and Minyerri, as well as Limmen National Park, from the division Barkly.
- The rural-remote division of Daly had its southern boundary extended by gaining areas around Victoria Highway, including the community of Timber Creek, from Gwoja.
- The remote division of Gwoja had substantial changes to its boundaries which resulted in a significant increase in its physical size. Gwoja's northern boundary moved south (losing Timber Creek and some areas around Victoria Highway to Daly), and it also lost areas around the communities of Ti Tree and Willora to Barkly. However, its southern boundary was extended all the way to the South Australian border gaining a large area from the division of Namatjira. Gwoja also had a name change in 2019 (it was formerly named the division of Stuart).
- The remote division of Barkly lost areas to its north to Arnhem (as described above) and gained areas to its south around the Sandover Highway, so that the southern border replicates the southern border of Barkly Regional Council. Barkly also gained areas around the communities of Ti Tree and Willora, in its south-west corner, from Gwoja.

- The remote division of Namatjira also received significant changes. It lost its entire western section to Gwoja, and its northern boundary moved southwards losing areas around the Sandover Highway to Barkly. Namatjira gained urban areas from Alice Springs in order to increase its elector numbers, resulting in the formerly remote division becoming a hybrid remote-urban division.
- The division of Katherine lost the suburbs of Tindal and Venn to the division of Arnhem in order to significantly decrease its number of electors.
- The addition of Alice Springs urban areas to the remote division of Namatjira decreased the number of electors in the divisions of Araluen and Braitling which were well-over quota prior to the redistribution.

3.6 Main issues of consideration for 2023

The 2023 Redistribution Committee considered the above changes in preparing the first proposed redistribution as well as the current issues relating to elector numbers across all 25 divisions.

The major challenges identified by the committee in achieving the object of the redistribution, to have the numbers of electors across all divisions as close to equal as practicable for the 2024 Territory Election, are summarised in the table below.

Table 8: 2023 redistribution issues to consider by region

Region	Division	Description of issue
Central Australia	Gwoja	Gwoja is under quota, but already covers a large area. Boundary changes will need to increase the number of electors without increasing the physical size too much. Also, while there are some areas in Gwoja that share communities of interest with areas in Barkly, this division is also under quota and large in size so moving electors from Barkly to Gwoja is problematic.
Remote north and Katherine	Arafura	At 3 February when the first quota was calculated, the division of Arafura was 6.2% under quota, and was one of the divisions considered a potential focus of the committee. However, in March 2023 a by-election for Arafura resulted in a large number of enrolments and as at 17 April, Arafura's enrolment had increased to 5,838 (1.2% under quota).
	Mulka	Mulka is significantly over quota (9.2% at 17 April). The division is made up of the township of Nhulunbuy and Yolngu Matha speaking communities of East Arnhem. The only way to decrease elector numbers is to move some remote communities in Mulka into an adjacent division, both of which have different language and cultural groups. Additionally both divisions adjacent to Mulka are close to quota.
Palmerston	Spillet	Spillet is significantly over quota (by 17.5% at 17 April). The elector numbers across the 4 divisions covering the Palmerston area are approximately 1,300 over quota. Therefore a significant number of Palmerston residents will need to be moved to divisions in either the Darwin suburbs or Darwin rural regions in order to get all 4 Palmerston divisions close to quota.

Region	Division	Description of issue
Darwin suburbs	Fannie Bay	Fannie Bay is under quota and is currently comprised of 4 whole suburbs. The movement of electors to bring Fannie Bay closer to quota is likely to result in splitting a nearby suburb across 2 divisions. Splitting suburbs is not ideal and avoided where possible. Additionally, the divisions adjacent to Fannie Bay are also under quota.
	Fong Lim	Fong Lim is under quota but is a likely recipient of electors from the adjacent division of Spillett.
	Sanderson	Sanderson is under quota and is currently made up of 4 whole suburbs plus the airport precinct. Similar to Fannie Bay, the movement of electors is likely to require splitting a suburb, and most adjacent divisions are also under quota.
	Wanguri	Wanguri is well over quota due to the continued development of Muirhead. While the suburb of Muirhead is already split between Wanguri and Casuarina, the number of electors required to move out of the division is fairly large, and will have flow on effects to multiple divisions in this region.

3.7 Methodology for determining first proposed redistribution

As at 17 April 2023, when updated electoral roll data reflected the increased elector numbers in the division of Arafura, there were 8 divisions that were 5% or more above or below the quota (adjusted to 5,911 when using the updated data). Of these, only one division (Spillett) had a variance of over 10% from the quota.

This is in stark contrast to the 2019 redistribution when at the commencement of the redistribution process there were 15 divisions with a variance from the quota of over 5%, with 8 of these having a variance of over 10%. This resulted in significant changes to electoral boundaries for many divisions, particularly for remote divisions, in order to address these large variances and achieve the object of redistribution.

As well as considering the current enrolment information, the committee looked at the projected enrolment figures from the ABS. However, these figures show only moderate changes to enrolment growth between now and the next general election, with a total change in enrolment being an increase of 180 electors across the Territory.

As a Legislative Assembly redistribution for the Northern Territory involves small divisions, each boundary change has potentially significant flow-on effects on surrounding divisions. This means the starting point is important. These traditionally have been the urban centres of Darwin (with the starting point being the CBD area) and Alice Springs. If minimal changes to the starting points are made, this will minimise the impact on other divisions.

However, in developing the first proposed boundaries for the 2023 NT Electoral Boundary Redistribution, the committee started in the Palmerston region due to the division of Spillett having the greatest variance from quota (and the only one with a variance of over 10% at 17.5%). Due to the other Palmerston region divisions being very close to quota, or slightly over, resolving the high variance would not be as simple as moving electors between these divisions. Some Palmerston electors would have to be moved to either Fong Lim or a Darwin rural division.

Once consensus for proposed changes for the Palmerston region divisions was reached, the committee moved to the next division with the highest variance which was Wanguri, and worked through the remaining divisions in the Darwin suburbs region balancing the flow on effects from the changes made to the division of Wanguri.

From here the committee moved through the divisions from the two completed regions outwards; from Darwin rural, to remote north and Katherine, followed by Central Australia starting from Gwoja and moving towards Alice Springs, where minimal changes were needed.

Through this process, moving through all 25 divisions, the committee considered the upcoming activities that may impact on the current enrolment numbers, the projected enrolment figures for August 2024, communities of interest, and the suggestions on comments on suggestions from the public. The committee also tried to keep whole suburbs together in one division and put split suburbs back together where possible, and keep SA1 areas together in one division and put split SA1s back together where possible.

4. Division names

4.1 Legislation and convention

In addition to proposing boundaries for NT's 25 electoral divisions, the *Electoral Act 2004* allows the committee to propose new names for divisions, but only if the existing name is no longer appropriate (s 139B). The legislation also specifies that the use of locality names should be avoided.

Locality names (in particular suburb names) have previously been used in many instances in the Territory. However, as boundaries change, these names may no longer be relevant, or may become confusing, when a suburb no longer lies wholly within one division.

Typically, the names of Commonwealth electoral divisions and of living persons are avoided and divisions are now often named after a person who has died and given significant service to the Territory, or from a name or word that is significant to the area where the division is located.

A number of current divisions are named after a suburb that while still currently relevant to that division, may change as a result of boundary changes. These divisions are: Araluen, Braitling, Casuarina, Fannie Bay, Karama, Nightcliff and Wanguri.

4.2 Suggestions received regarding division names

Table 9: Public suggestions for name changes to divisions

Suggested by	Division	Name change suggestion
JP. Baladi	Fannie Bay	Forster After Sir William Edward Stanley Forster, NT's first senior judge and Chief Judge of the Supreme Court. Only person to receive a knighthood for services to the Northern Territory.
B. Close	Fong Lim	Port Darwin After suggested redistribution of electors from Spillett to Fong Lim, the port will be located in this division.
	Goyder	Mary After the Mary River located in the division. This allows current name to be available for federal redistributions.
	Port Darwin	Darwin This is consistent with other states where the division that houses the CBD area is named after capital city.
	Spillett	Suggests changing name to eventual population centre (after suggested redistribution of electors).
Country Liberal Party	Casuarina, Fannie Bay, Karama, Nightcliff, Sanderson, Wanguri	Suggests renaming northern suburb divisions currently sharing place names and recognise prominent Territorians (particularly Larrakia people) in doing so.
R. Lambley MLA	Araluen	No change to division name as namesake suburb is still central to the division and the original Araluen homestead is still located in the division.
N. Manison MLA	Wanguri	No change to the division name.

C. Paech MLA	Araluen	<p>Pink</p> <p>After Olive Pink; botanical illustrator, anthropologist, gardener and Aboriginal rights activist. Established the botanical gardens located in the division.</p>
	Braitling	<p>Perkins</p> <p>After Charles Nelson Perkins; prominent Aboriginal rights activist born in Alice Springs.</p>

4.3 Determination of the committee regarding changes to division names

While there are a number of divisions that share a name with a locality (in most cases a suburb), the committee decided that it would not, at this time, look to change the name of a division unless:

- There were major boundary changes to a division which resulted in significant numbers of electors moving into and out of a division; *and*
- These changes resulted in the locality which the division is named after no longer being located wholly within the division.

The committee also determined that even if the above conditions were not satisfied, but there was strong support from the public for a name change (i.e. multiple submissions showing support, with further consultation conducted), the committee would then also consider changing a division name under these circumstances.

As neither of the above conditions occurred as part of the first proposed redistribution or via the first 2 public consultation periods, there are no proposed name changes as part of this first proposed redistribution.

5. The first proposed redistribution

This section provides details of the first proposed redistribution of the NT’s Legislative Assembly electoral divisions by the Redistribution Committee. Copies of the maps showing the proposed boundaries accompany this report at Appendix A.

Appendix B to this report provides statistics of enrolment by division for the current boundaries and the first proposed boundaries, and variance from the quota for both. While the first quota was calculated 3 February 2023 at the commencement of the redistribution process, due to the significant impact of the Arafura by-election on the enrolment for that division, this first proposed redistribution uses enrolment data as at 17 April 2023, where the quota has decreased slightly to 5,911 (from 5,928 in February).

Appendix C provides a summary of the number of electors to be transferred between divisions (using ABS Statistical Area Level 1 data) arising from the committee’s proposals.

As per the *Electoral Act 2004*, the committee aimed to achieve the object of redistribution, while following the principles and matter for consideration in preparing this first proposed redistribution. The committee was also guided by the submissions received during the first 2 rounds of public consultation and the projected enrolment figures from the ABS, while also being mindful of current and future enrolment activities related to the upcoming constitutional referendum. In preparing the proposed boundaries the committee also tried, where possible, to:

- keep whole suburbs together in one division
- put split suburbs back together in one division
- avoid splitting SA1 areas across divisions
- put split SA1s back together in one division.

The first proposed redistribution has resulted in no changes to 9 divisions, and 24 of the 25 divisions being within 5% variance of the quota.

5.1 Proposal for the Darwin suburbs region - refer to Maps 2, 3 and 4 in Appendix A.

There are 9 electoral divisions in the Darwin suburbs region. Since the 2020 Territory Election, these 9 divisions have collectively had an increase of 1,492 electors.

The following table shows the enrolment numbers and variance from the quota as at the 2020 Territory Election, the current enrolment and the enrolment after the first proposed boundaries are applied.

Table 10: Darwin suburbs region – enrolment and variance from quota (%)

Division	2020 Territory Election close of roll		Current boundaries 17 April 2023		Proposed boundaries 17 April 2023	
	Enrolment	Variance	Enrolment	Variance	Enrolment	Variance
Casuarina	5,647	- 0.04%	5,813	-1.7%	5,673	-4.0%
Fannie Bay	5,473	-3.1%	5,509	-6.8%	6,114	3.4%
Fong Lim	5,555	-1.7%	5,542	-6.2%	5,751	-2.7%
Johnston	5,556	-1.6%	5,791	-2.0%	5,759	-2.6%
Karama	5,482	-3.0%	5,752	-2.7%	5,785	-2.1%

Division	2020 Territory Election close of roll		Current boundaries 17 April 2023		Proposed boundaries 17 April 2023	
	Enrolment	Variance	Enrolment	Variance	Enrolment	Variance
Nightcliff	5,621	-0.5%	5,746	-2.8%	5,953	0.7%
Port Darwin	5,699	0.9%	5,882	0.5%	5,882	-0.5%
Sanderson	5,449	-3.5%	5,556	-6.0%	5,810	-1.7%
Wanguri	6,111	8.2%	6,494	9.9%	5,854	-1.0%
Total	50,593		52,085		52,581	

5.1.1 Considerations for the divisions of Wanguri and Casuarina

When preparing the redistribution for the Darwin suburbs region, the committee started at the division of Wanguri as it was significantly over quota due to the continued development of Muirhead since the last election. A number of public submissions had suggestions for the reduction of electors in the division of Wanguri, with almost all suggesting the movement of electors to the division of Casuarina (from either Muirhead or Wanguri suburbs). Depending on how many electors are moved, the flow on effects may mean Casuarina would also need to lose electors to another division.

The committee modelled scenarios that would keep whole suburbs together, including moving Wanguri suburb to Casuarina, moving Lyons to Wanguri and having all of Muirhead in one division. However, the resulting enrolment numbers in these scenarios did not support these moves. The committee therefore modelled several different scenarios of moving further sections of Muirhead to Casuarina based around the small section already located in Casuarina.

Adding a large number of Muirhead electors to Casuarina allowed for the sections of Alawa (currently split between the divisions of Casuarina and Johnston) to be moved out of Casuarina and into Johnston resulting in the suburb of Alawa being located wholly within the division of Johnston.

The committee is also proposing to move the suburb of Holmes from the division of Wanguri to the division of Karama in order to connect other areas adjacent to Holmes to Karama. No electors are affected by this change.

The proposed redistribution for the divisions of Wanguri and Casuarina result in the division of Wanguri being within 1% of the quota and Casuarina being 4% under quota. This allows for any small growth still remaining in Muirhead, and any potential development (though unlikely before the 2024 Territory Election) in the suburb of Lee Point.

Wanguri

The committee proposes to move electors from north Muirhead to the division of Casuarina. The north west boundary of the division (from west to east) is proposed to run along Coleman Street from Lee Point Road, then north along Asche Street, then east along the drainage canal separating Philpott Street and Dorling Street, then east along Hargrave Street continuing straight to the Muirhead boundary. All properties north of this boundary will be in the division of Casuarina, and those properties south of this boundary will be in Wanguri.

The committee proposes to move the suburb of Holmes to the division of Karama.

This proposal results in the division of Wanguri being made up of 3 whole suburbs (Buffalo Creek, Leanyer and Wanguri) and a large portion of Muirhead. Wanguri also retains its small section of Lee Point so that the Buffalo Creek Management Area is located wholly in one division.

Proposed enrolment after changes: 5,854 (-1.0% from quota)

Casuarina

The committee proposes to move electors from north Muirhead from the division of Wanguri to the division of Casuarina. The boundary between the divisions through Muirhead (from west to east) is proposed to run along Coleman Street from Lee Point Road, then north along Asche St, then east along the drainage canal separating Philpott Street and Dorling Street, then east along Hargrave Street continuing straight to the Muirhead boundary. All properties north of this boundary will be in the division of Casuarina, and those properties south of this boundary will be in Wanguri.

The committee proposes to move all current sections of the suburb Alawa in the division of Casuarina to the division of Johnston.

This proposal results in the division of Casuarina being made up of 4 whole suburbs (Brinkin including Charles Darwin University, Lyons, Nakara and Tiwi), most of Lee Point (minus the section of Buffalo Creek Management Area in that suburb) and a portion of Muirhead.

Proposed enrolment after changes: 5,673 (-4.0% from quota)

5.1.2 Considerations for the divisions of Johnston, Nightcliff, Fannie Bay and Port Darwin

The main focus for the committee for these 4 divisions was that Fannie Bay is substantially under quota, and that as a flow on effect from the movement of electors from Wanguri to Casuarina, the division of Johnston gain a large number of electors in Alawa.

This gain of electors in Alawa allows for other electors currently within the boundaries of Johnston to be moved to adjacent divisions. All of the submissions received that discussed options for these 4 divisions suggested quite different changes, but the committee felt the obvious place to move electors from was the section of Coconut Grove in Johnston (which one submission also suggested). By removing all Coconut Grove electors from the division of Johnston, and balancing the suburb between the divisions of Nightcliff and Fannie Bay, all 3 divisions move to within 5% of the quota.

With no further flow on effects from the above changes, and Port Darwin currently close to quota, the committee saw no reason for boundary changes to the division of Port Darwin.

Johnston

The committee proposes that the division of Johnston gain electors from the sections of Alawa that are currently in the division of Casuarina. This results in the suburb of Alawa being wholly within the division of Johnston.

The committee proposes that Johnston lose its section of Coconut Grove, with that suburb's electors being balanced between the divisions of Nightcliff and Fannie Bay.

This proposal results in the division of Johnston being made up of 4 whole suburbs only: Alawa, Jingili, Millner and Moil.

Proposed enrolment after changes: 5,759 (-2.6% from quota)

Nightcliff

The committee proposes that Nightcliff gain a section of Coconut Grove that is currently in the division of Johnston, but also that it lose a section of the same suburb to Fannie Bay. This means that the northern section of Coconut Grove will be in the division of Nightcliff and the southern section will be in the division of Fannie Bay.

The boundary between the two divisions is proposed to run just south of Kulaluk community and the retirement village at 141 Dick Ward Drive so that these areas are located in Nightcliff and all properties in Ostermann Street (and south of Ostermann Street) are moved to the division of Fannie Bay. The boundary then runs south along Dick Ward Drive, then east along Old McMillans Road until Bagot Road (the suburb and division boundary). The properties north of Old McMillans Road will be located in the division of Nightcliff, and those south are moved to the division of Fannie Bay.

This proposal results in the division of Nightcliff being made up of 2 whole suburbs (Nightcliff and Rapid Creek) and the northern part of Coconut Grove.

Proposed enrolment after changes: 5,953 (0.7% from quota)

Fannie Bay

The committee proposes that the division of Fannie Bay gain electors from the southern part of Coconut Grove which is currently split between the divisions of Nightcliff and Johnston.

The proposal splits the suburb of Coconut Grove along a boundary to run just south of Kulaluk community and the retirement village at 141 Dick Ward Drive so that these areas are located in Nightcliff and all properties in Ostermann Street (and south of Ostermann Street) are moved to the division of Fannie Bay. The boundary then runs south along Dick Ward Drive, then east along Old McMillans Road until Bagot Road (the suburb and division boundary). The properties north of Old McMillans Road will be located in the division of Nightcliff, and those south are moved to the division of Fannie Bay.

This proposal results in the division of Fannie Bay being made up of 4 whole suburbs (East Point, Ludmilla, Parap and The Gardens) and the southern part of Coconut Grove.

Proposed enrolment after changes: 6,114 (3.4% from quota)

Port Darwin

There are no proposed changes to the division of Port Darwin.

Current and proposed enrolment: 5,882 (-0.5% from quota)

5.1.3 Considerations for the divisions of Fong Lim, Sanderson and Karama

All 3 of these divisions are currently under quota with both Fong Lim and Sanderson under quota by more than 5%. With the significantly over quota division of Spillett being adjacent to Fong Lim, most submissions that discussed these divisions suggested moving the eastern parts of Spillett to Fong Lim.

Due to this potential movement of electors from Spillett to Fong Lim, larger discussions about redistribution options for the Palmerston divisions also involved Fong Lim, as the committee had to decide how to reduce the current enrolment in the 4 Palmerston divisions by approximately 1,300 electors. Once the more obvious areas outside of the City of Palmerston municipal boundary are moved out (by moving the industrial areas in the eastern half of Spillett, including Northcrest, to Fong Lim), the 4 Palmerston divisions combined are still over quota by about 500 electors. The committee therefore considered its 2 main options to be moving Palmerston electors to a Darwin suburbs division or a Darwin rural division.

Ultimately the committee decided to propose moving the rural suburb of Marlow Lagoon to a rural division (see section 5.2 of this report for details) and therefore Fong Lim will only gain some industrial areas and Northcrest from Spillett.

Another section of Fong Lim that was considered for redistribution was the suburb of The Narrows and the residential section of Eaton that lies directly north of The Narrows. The suburb of Eaton is currently split with the large airport precinct (which has minimal electors) currently located in the division of Sanderson with the residential section of Eaton in Fong Lim. With both Fannie Bay and Sanderson requiring more electors, moving The Narrows and the residential section of Eaton into either of these divisions was considered and modelled. However, the committee decided that Fannie Bay would gain electors to its north, and that it was not appropriate to move these electors to Sanderson as they are more oriented to inner city Darwin rather than the northern suburbs.

Instead, the committee looked to moving electors from the division of Karama to Sanderson in order get closer to the quota, which then had the flow on effects of Karama needing more electors. The committee decided that the adjacent suburb of Knuckey Lagoon, being in the school catchment area for primary schools in the division of Karama (and senior schools in the northern suburbs), was appropriate to move to this division.

Fong Lim

The committee proposes that the division of Fong Lim gain electors from a large area currently in the division of Spillett: the industrial suburbs of East Arm and Wishart, as well as the remainder of Berrimah (including Northcrest) so that the entire southern section of Berrimah (that is located south of Stuart Highway) will be in Fong Lim.

This proposal results in the division of Fong Lim being made up of 10 whole suburbs (Stuart Park, Woolner, Bayview, The Narrows, Winnellie, Charles Darwin, Coonawarra, Hidden Valley, Wishart and East Arm), as well as a small section of Eaton (the residential section located near The Narrows) and the entire southern section of Berrimah (located south of Stuart Highway), including Northcrest.

Proposed enrolment after changes: 5,751 (-2.7% from quota)

Sanderson

The committee proposes that the division of Sanderson gain electors from the division of Karama that are located south of McMillans Road, which includes a small section of Marrara and the northern section of Berrimah.

This proposal results in the division of Sanderson being made up of 4 whole suburbs (Wagaman, Wulagi, Anula and Marrara), a large part of Eaton (the airport precinct) and the entire northern section of Berrimah (located north of Stuart Highway).

Proposed enrolment after changes: 5,810 (-1.7% from quota)

Karama

The committee proposes that the division of Karama lose electors located in its portion south of McMillans Road (which includes a small section of Marrara and part of Berrimah) to the division of Sanderson.

The committee proposes that the division of Karama gain the suburb of Holmes from the division of Wanguri, and the suburb of Knuckey Lagoon from the division of Nelson.

This proposal results in the division of Karama being made up of 4 whole suburbs only: Karama, Malak, Knuckey Lagoon and Holmes.

Proposed enrolment after changes: 5,785 (-2.1% from quota)

5.2 Proposal for the Palmerston and Darwin rural regions - refer to Maps 2 and 5 in Appendix A.

There are 4 electoral divisions in the Palmerston region and 2 in the Darwin rural area. Since the 2020 Territory Election, these 6 divisions have collectively had an increase of 2,570 electors.

The following table shows the enrolment numbers and variance from the quota as at the 2020 Territory Election, the current enrolment and the enrolment after the first proposed boundaries are applied.

Table 11: Palmerston and Darwin rural regions – enrolment and variance from quota (%)

Division	2020 Territory Election close of roll		Current boundaries 17 April 2023		Proposed boundaries 17 April 2023	
	Enrolment	Variance	Enrolment	Variance	Enrolment	Variance
Blain	5,695	0.8%	5,922	0.2%	6,188	4.7%
Brennan	5,746	1.7%	5,983	1.2%	5,994	1.4%
Drysdale	5,828	3.2%	6,208	5.0%	6,125	3.6%
Goyder	5,583	-1.2%	5,904	-0.1%	5,904	-0.1%
Nelson	5,505	-2.5%	5,830	-1.4%	6,040	1.9%
Spillett	5,863	3.8%	6,943	17.5%	6,043	2.2%
Total	34,220		36,790		36,294	

5.2.1 Considerations for the Palmerston region divisions: Blain, Brennan, Drysdale and Spillett

Due to the significant over enrolment of the division of Spillett, the committee started its considerations for the first proposed redistribution in this region, and with the division of Spillett.

While the public submissions regarding this region were varied, most suggested Spillett lose most of its industrial areas in its western half to the division of Fong Lim (including the still developing Northcrest). However, even with these electors removed, the 4 Palmerston divisions are still approximately 1,100 electors over quota collectively. Attempting to spread these 1,100 electors evenly across all 4 divisions would require splitting multiple suburbs to balance elector numbers.

The committee then considered options where further electors could be moved to either Fong Lim or a Darwin rural division in a way that the elector numbers in the Palmerston divisions were reduced enough so that all 4 were within 5% of the quota. It was calculated that this would require a minimum of 500 electors to be moved. In doing this, the committee looked for options that were as minimally disruptive as possible, that would not split suburbs across divisions, and if possible, allow for some currently split suburbs to be put back together in one division.

Table 12 below shows the enrolment numbers (as at 17 April 2023) by suburb for the Palmerston divisions. The table only lists the urban suburbs as industrial areas have negligible electors.

Table 12: enrolment by suburb in Palmerston region

Palmerston suburb	Enrolment
Bakewell	2,166
Bellamack	1,557
Driver	1,955
Durack	2,579
Farrar	1,061
Gray	2,355
Gunn	1,769
Johnston	1,217
Marlow Lagoon	455
Moulden	2,282
Rosebery	2,575
Woodroffe	2,347
Zuccoli	2,395

Table 12 above highlights that the semi-rural suburb of Marlow Lagoon is a practical option to move due to its low numbers enabling the movement of an entire suburb. Additionally, by looking to move the semi-rural suburb to one of the Darwin Rural divisions, the community of interest principle can also be maintained.

Two main scenarios were modelled:

- moving the entire suburb of Marlow Lagoon to the division of Goyder connecting from Virginia, and therefore also moving the suburbs Mitchell and Archer (which have no electors) to Goyder, and;
- moving the entire suburb of Marlow Lagoon to the division of Nelson connecting from Holtze and therefore also moving the suburbs of Pinelands, Tivendale and Elrundie (which have minimal electors) into Nelson.

The Goyder option wrapped around Palmerston from the east, to its south and to its west, which was considered more intrusive by the committee than the Nelson option, which comes from the north-west corner of Palmerston then moves south taking in areas to the west of Palmerston. Furthermore, while both Goyder and Nelson are currently within 1% of the quota, with the proposed movement of electors from Nelson to Karama (by moving Knuckey Lagoon), Nelson has more capacity to gain this number of electors.

After the proposed movement of electors into Fong Lim and Nelson from Spillett, the 4 Palmerston divisions are still over quota collectively, but at a level where all 4 divisions can be within 5% over quota. The committee then considered possible boundary changes that allowed for suburbs to stay intact, and for currently split suburbs to be put back together while still having these divisions retain their core areas. The first proposed redistribution achieves this, with only the suburb of Zuccoli split between 2 divisions, however, this split is done in a way that mostly keeps the Zuccoli sub-divisions together, and with further growth expected between now and the 2024 Territory Election, this split allows for any growth to be shared across 2 divisions.

Blain

The committee proposes that the division of Blain lose its section of Rosebery to the division of Brennan so that the entire suburb of Rosebery is now in Brennan.

The committee proposes that the division of Blain gain the remainder of the suburb of Moulden from the division of Drysdale so that the entire suburb of Moulden is located in Blain, and gain the suburb of Archer from the division of Spillett.

This proposal results in the division of Blain being made up of 4 whole suburbs only: Archer, Bellamack, Moulden and Woodroffe.

Proposed enrolment after changes: 6,188 (4.7% from quota)

Brennan

The committee proposes that the division of Brennan lose the entire suburb of Gunn to the division of Drysdale, and the entire suburb of Farrar to the division of Spillett.

The committee proposes that the division of Brennan gain the remainder of the suburb of Rosebery from the division of Blain so that the entire suburb of Rosebery is located in Brennan, and gain the suburb of Mitchell from the division of Spillett.

The committee proposes that Brennan will gain a southern section of Zuccoli. The new boundary will follow the boundary between Mitchell Creek Green sub-division and the Zuccoli Aspire sub-division so that all electors in Mitchell Creek Green remain in Spillett and all electors in Zuccoli Aspire will be moved to Brennan. The boundary will then split the Zuccoli Village sub-division so that all electors north of Tovey Street will remain in Spillett and all electors south of Tovey Street will be moved to Brennan.

This proposal results in the division of Brennan being made up of 3 whole suburbs (Bakewell, Mitchell and Rosebery) and a southern section of Zuccoli (Zuccoli Aspire and the southern part of Zuccoli Village)

Proposed enrolment after changes: 5,994 (1.4% from quota)

Drysdale

The committee proposes that the division of Drysdale lose its section of Moulden to the division of Blain so that the entire suburb of Moulden is now in Blain.

The committee proposes that the division of Drysdale gain the entire suburb of Gunn.

This proposal results in the division of Drysdale being made up of 3 whole suburbs (Driver, Gray and Gunn) and the section of Palmerston City south of University Avenue.

Proposed enrolment after changes: 6,125 (3.6% from quota)

Spillett

The committee proposes that the division of Spillett lose the suburbs of East Arm and Wishart, as well as its section of Berrimah (including Northcrest) to the division of Fong Lim. Spillett is also proposed to lose the suburbs of Pinelands, Tivendale, Elrundie and Marlow Lagoon to the division of Nelson, as well as the suburb of Archer to the division of Brennan, and the suburb of Mitchell to the division of Brennan.

The committee proposes that the suburb of Zuccoli is split so that Spillett only retains the northern part of that suburb. All electors in the Mitchell Creek Green sub-division will remain in Spillett, while Zuccoli Village will be split along Tovey Street so that all electors north of Tovey Street remain in Spillett and electors south of Tovey Street are moved to Brennan.

In order to now connect the suburbs of Durack and Yarrowonga to Johnston and Zuccoli, the committee proposes that Spillett gain the entire suburb of Farrar from the division of Brennan.

This proposal results in the division of Spillett being made up of 4 whole suburbs (Durack, Farrar, Johnston and Yarrowonga) and a northern section of Zuccoli (Mitchell Creek Green and the northern part of Zuccoli Village).

Proposed enrolment after changes: 6,043 (2.2% from quota)

5.2.2 Considerations for the Darwin rural region divisions: Goyder and Nelson

For details about the committee's considerations leading to the proposals for the division of Nelson, see considerations in sections 5.2.1 and 5.1.3.

In addition to these considerations, the committee looked at the Vernon Islands located just north of Gunn Point and which are currently part of the division of Nelson. As a result of a long-standing land claim, the Vernon Islands were handed back to the Tiwi people in 2018. Since then, the islands have been under the jurisdiction and care of the Tiwi Land Council. Due to this, the committee propose to move the Vernon Islands into the division of Arafura which includes the Tiwi Islands (there are no electors involved).

With no further flow on effects from the changes to Nelson or changes in the adjacent Palmerston region divisions, and with Goyder currently on quota, the committee saw no reason for boundary changes to the division of Goyder.

The committee proposes that the division of Nelson lose the suburb of Knuckey Lagoon to the division of Karama, and lose the Vernon Islands (by splitting an SA1) to the division of Arafura.

The committee proposes that the division of Nelson gain the entire suburbs of Pinelands, Tivendale, Elrundie and Marlow Lagoon from the division of Spillett.

This proposal results in the division of Nelson retaining all of its current localities with the exception of the suburb of Knuckey Lagoon and the Vernon Islands. The division of Nelson will also gain 4 localities: the suburbs of Pinelands, Tivendale, Elrundie and Marlow Lagoon.

Proposed enrolment after changes: 6,040 (1.9% from quota)

Goyder

There are no proposed changes to the division of Goyder.

Current and proposed enrolment: 5,904 (-0.1% from quota)

5.3 Proposal for the remote north and Katherine divisions - refer to Maps 1 and 6 in Appendix A.

There are 5 electoral divisions in the remote north and Katherine region. Since the 2020 Territory Election, these 5 divisions have collectively had an increase of 2,101 electors.

The following table shows the enrolment numbers and variance from the quota as at the 2020 Territory Election, the current enrolment and the enrolment after the first proposed boundaries are applied.

Table 13: Remote north and Katherine region – enrolment and variance from quota (%)

Division	2020 Territory Election close of roll		Current boundaries 17 April 2023		Proposed boundaries 17 April 2023	
	Enrolment	Variance	Enrolment	Variance	Enrolment	Variance
Arafura	5,183	-8.2%	5,838	-1.2%	5,838	-1.2%
Arnhem	5,431	-3.9%	5,822	-1.5%	5,822	-1.5%
Daly	5,622	-0.5%	6,086	3.0%	5,829	-1.4%
Katherine	5,749	1.8%	6,012	1.7%	6,012	1.7%
Mulka	6,124	8.4%	6,452	9.2%	6,452	9.2%
Total	28,109		30,210		29,953	

5.3.1 Considerations for the remote north and Katherine divisions: Arafura, Arnhem, Daly, Katherine and Mulka

Prior to the Arafura by-election in March, the enrolment for the division of Arafura was 5,535 which was 6.6% under quota. Approximately 300 additional electors were added to the division during this election, mostly from the 246 declaration votes accepted at that election. Currently, the division of Arafura is 1.3% below quota.

As detailed in section 5.2.2, the committee did consider the Vernon Islands, located just north of Gunn Point and part of the division of Nelson, and which division they should be in. The islands were handed back to the Tiwi people in 2018 as a result of a long running land claim and have since been under the jurisdiction and care of the Tiwi Land Council. To reflect this, the committee propose to move the Vernon Islands to the division of Arafura which includes the Tiwi Islands. There are no electors affected by this move.

The divisions of Arafura, Arnhem, Daly and Katherine are all currently within 3% of the quota and the committee initially looked to make no changes to these divisions. However, as a result of proposed changes to the division of Gwoja (for more details see section 5.4.1) in order to increase this division’s number of electors, the southern boundary of the division of Daly is proposed to contract to what it was prior to the 2019 redistribution. This involves moving the community of Timber Creek and its outstations, as well as pastoral properties near Victoria Highway, from Daly to Gwoja.

The division of Mulka however, is over quota by about 500 electors. The committee agreed with the suggestion from the Member for Mulka that moving any electors out of the division would separate Yolngu Matha language speakers from their ‘community of interest’ and therefore contravene one of the legislated matters for consideration. In its considerations, the committee compiled a list of communities that currently lie near the boundaries of the 2 adjacent divisions, Arafura and Arnhem, with their enrolment numbers (Table 14 below) to look at the possible movement of communities out of Mulka. Any movement of communities would need to keep outstations together with their central community in one division, and the committee agreed with the Member for Mulka’s submission which describes Milingimbi and Ramingining as “*essentially one large interconnection community spread across 2 locations*”. For the first proposed redistribution, the committee feels the community of interest argument currently outweighs concerns regarding the approximately 500 electors over quota (as Mulka’s enrolment is still within 10% of the quota).

Table 14: Enrolment in communities in Mulka located near boundaries with Arafura and Arnhem

Near ARAFURA boundary		Near ARNHEM boundary	
Community	Enrolment	Community	Enrolment
Gumuruguru	0	Dhuruputjpi	15
Bodia	1	Banyiala	110
Bayagida	0	Djarrakpi	7
Milingimbi	800	Barraratjpi	7
Bundatharri	2	Rurrangala	15
Yathalamarra	29	Wandawuy	69
Galawdjapin	2	Gurkawuy	0
Gilirri	0	Bukudal	5
Ramingining	660		
Wulkbimirri	3		
Mulgarram	0		

All of the remote north divisions (and those in Central Australia, see section 5.4) are likely to be impacted by enrolment activities being conducted by the AEC in the lead up to the constitutional referendum scheduled for October this year. These activities are targeting unenrolled Aboriginal people in remote areas and could potentially increase current enrolment numbers substantially. For most of the remote divisions, an increase in enrolment can be absorbed as they are currently under quota. However, this could be a significant challenge for the division of Mulka particularly if its variance from quota gets close to the maximum 20% allowed.

Arafura

There are no proposed changes to the division of Arafura.

Current and proposed enrolment: 5,838 (-1.2% from quota)

Arnhem

There are no proposed changes to the division of Arnhem.

Current and proposed enrolment: 5,822 (-1.5% from quota)

Daly

The committee proposes that the division of Daly lose the community of Timber Creek and its outstations, as well as a large area north and east of Timber Creek. Currently SA1 7106808 is split between the divisions of Daly and Gwoja, but this proposal put this SA1 back together so that the entire SA1 is located in Gwoja.

The southern boundary of the division of Daly is proposed to run (from west to east) along the Fitzmaurice River, then along the northern cadastre boundaries of Wombungi station, Menngen Aboriginal Land Trust, Aroona station and Scott Creek station to the division of Katherine boundary. This reverts back to the Daly boundary as it was prior to the 2019 redistribution.

Proposed enrolment after changes: 5,829 (-1.4% from quota)

Katherine

There are no proposed changes to the division of Katherine.

Current and proposed enrolment: 6,012 (1.7% from quota)

Mulka

There are no proposed changes to the division of Mulka.

Current and proposed enrolment: 6,452 (9.2% from quota)

5.4 Proposal for the Central Australia divisions - refer to Maps 1 and 7 in Appendix A.

There are 5 electoral divisions in the Central Australia region. Since the 2020 Territory Election, these 5 divisions have collectively had an increase of 410 electors.

The following table shows the enrolment numbers and variance from the quota as at the 2020 Territory Election, the current enrolment and the enrolment after the first proposed boundaries are applied.

Table 15: Central Australia region – enrolment and variance from quota (%)

Division	2020 Territory Election close of roll		Current boundaries 17 April 2023		Proposed boundaries 17 April 2023	
	Enrolment	Variance	Enrolment	Variance	Enrolment	Variance
Araluen	5,742	1.3%	5,906	-0.1%	5,906	-0.1%
Barkly	5,690	0.7%	5,626	-4.8%	5,626	-4.8%
Braitling	5,830	3.2%	5,941	-0.5%	5,941	0.5%
Gwoja	5,313	-5.9%	5,410	-8.5%	5,667	-4.1%
Namatjira	5,728	1.4%	5,830	-1.4%	5,830	-1.4%
Total	28,303		28,713		28,970	

5.4.1 Considerations for the divisions of Barkly and Gwoja

The remote divisions of Barkly and Gwoja are the largest in physical size of all Territory divisions. One of the principles of redistribution is that the physical area of any division containing rural and remote areas should be as small as possible. Both Barkly and Gwoja increased in physical size at the 2019 redistribution in order to gain electors to achieve the object of redistribution. Additionally, both Barkly and Gwoja are under quota, by 4.8% and 8.5% respectively.

With Gwoja being more than 5% under quota, the committee looked at options to gain electors from nearby divisions. The suggestion from the Member for Gwoja was for the division to gain electors from Barkly by moving the communities of Ti Tree, Pmara Jutunta and Wilora to Gwoja. The committee modelled this option and while it improved the enrolment numbers for Gwoja and satisfied community of interest considerations, it also made the division of Barkly further under quota. Rather than trying to manage the flow on effects from this change by moving other electors into Barkly from its adjacent divisions (with both Arnhem and Namatjira only slightly under quota), the committee decided to look to the division of Daly instead to move electors into Gwoja. By moving the community of Timber Creek and its outstations, and putting a split SA1 back together that covers a large area surrounding these communities, both Daly and Gwoja move closer to the quota.

Due to Barkly covering the largest physical area of any division and being close to within 5% of the quota (and adjacent to divisions only slightly under quota), the committee decided not to make any changes to the boundaries of the division of Barkly.

Barkly

There are no proposed changes to the division of Barkly.

Current and proposed enrolment: 5,626 (-4.8% from quota)

Gwoja

The committee proposes that the division of Gwoja gain the community of Timber Creek and its outstations, as well as a large area north and east of Timber Creek. Currently SA1 7106808 is split between the divisions of Daly and Gwoja, but this proposal puts this SA1 back together so that the entire SA1 is located in Gwoja.

The northern boundary of the division of Gwoja is proposed to run (from west to east) along the Fitzmaurice River, then along the northern cadastre boundaries of Wombungi station, Menngen Aboriginal Land Trust, Aroona station and Scott Creek station to the division of Katherine boundary.

This reverts back to the boundary between Daly and Gwoja (then Stuart) as it was prior to the 2019 redistribution.

Proposed enrolment after changes: 5,667 (-4.1% from quota)

5.4.2 Considerations for the divisions of Araluen, Braitling and Namatjira

The divisions of Araluen, Braitling and Namatjira are all within 1% of the quota. While there were some suggestions for changes to these divisions, they would all result in these divisions contravening the object and principles of redistribution unnecessarily. Therefore the committee decided to make no changes to these 3 divisions.

Araluen

There are no proposed changes to the division of Araluen.

Current and proposed enrolment: 5,906 (-0.1% from quota)

Braitling

There are no proposed changes to the division of Braitling.

Current and proposed enrolment: 5,941 (0.5% from quota)

Namatjira

There are no proposed changes to the division of Namatjira.

Current and proposed enrolment: 5,830 (-1.4% from quota)

6. Publication of first proposed redistribution

6.1 Publication

The first proposed redistribution (this report) was released on 23 May 2023.

The report and accompanying maps are available on the redistribution web pages on the NT Electoral Commission's website. Maps are also available in hard copy on request to the NTEC.

6.2 Key proposals

Below is a summary of the key proposals for the first proposed redistribution of the 2023 NT Electoral Boundary Redistribution:

- The boundaries of 9 divisions are proposed to be unchanged – Araluen, Arnhem, Barkly, Braitling, Goyder, Katherine, Mulka, Namatjira and Port Darwin, with a tenth division (Arafura) receiving a minor boundary change that does not involve any movement of electors.
- 24 of the Territory's 25 divisions are within 5% of the quota after the proposed changes, with only Mulka (9.2%) beyond 5% variance.
- There are major changes proposed to the 4 divisions in Palmerston and, consequently, the adjacent divisions of Fong Lim and Nelson. This is due to the need to significantly reduce the number of electors in the division of Spillett. The Palmerston divisions have been redrawn in a way that attempts to keep suburbs together and allows current divisions to retain core areas.
- There are also a number of changes proposed for 8 of the 9 divisions in the Darwin suburbs region. Changes proposed to the division of Wanguri in order to reduce its number of electors have flow on effects for the divisions of Casuarina and Johnston, and Coconut Grove electors are split between Nightcliff and Fannie Bay to balance elector numbers. The divisions of Fong Lim and Karama are proposed to gain electors from the divisions of Spillett and Nelson respectively, with Sanderson consequently gaining electors from Karama. These proposals stem from the need to significantly reduce elector numbers in Spillett.
- There are very few changes proposed for divisions outside of the Darwin and Palmerston areas with the only elector movement proposed being at the boundary between Daly and Gwoja.
- The committee notes however, that the AEC is currently conducting enrolment activities that are targeting unenrolled Aboriginal people. This could potentially have a large impact in remote divisions, and could be particularly problematic in the division of Mulka, that is currently 9.2% over quota. If this enrolment impact necessitates substantial changes to remote divisions in the second proposed redistribution, a second objection period will be required.
- 11,604 electors are moved between electorates.

6.3 Objection period and lodgement arrangements

The Redistribution Committee invites written objections to the first proposed redistribution.

The final date for the receipt of objections is close of business on **Friday, 23 June 2023**.

Objections can be lodged by the following means:

❖ **EMAIL:** secretariat.ntec@nt.gov.au and mark 'Attention Redistribution Committee'

❖ **WEBSITE:** <https://haveyoursay.nt.gov.au/2023-nt-electoral-boundary-redistribution>

❖ **POST:** GPO Box 2419 | Darwin NT 0801

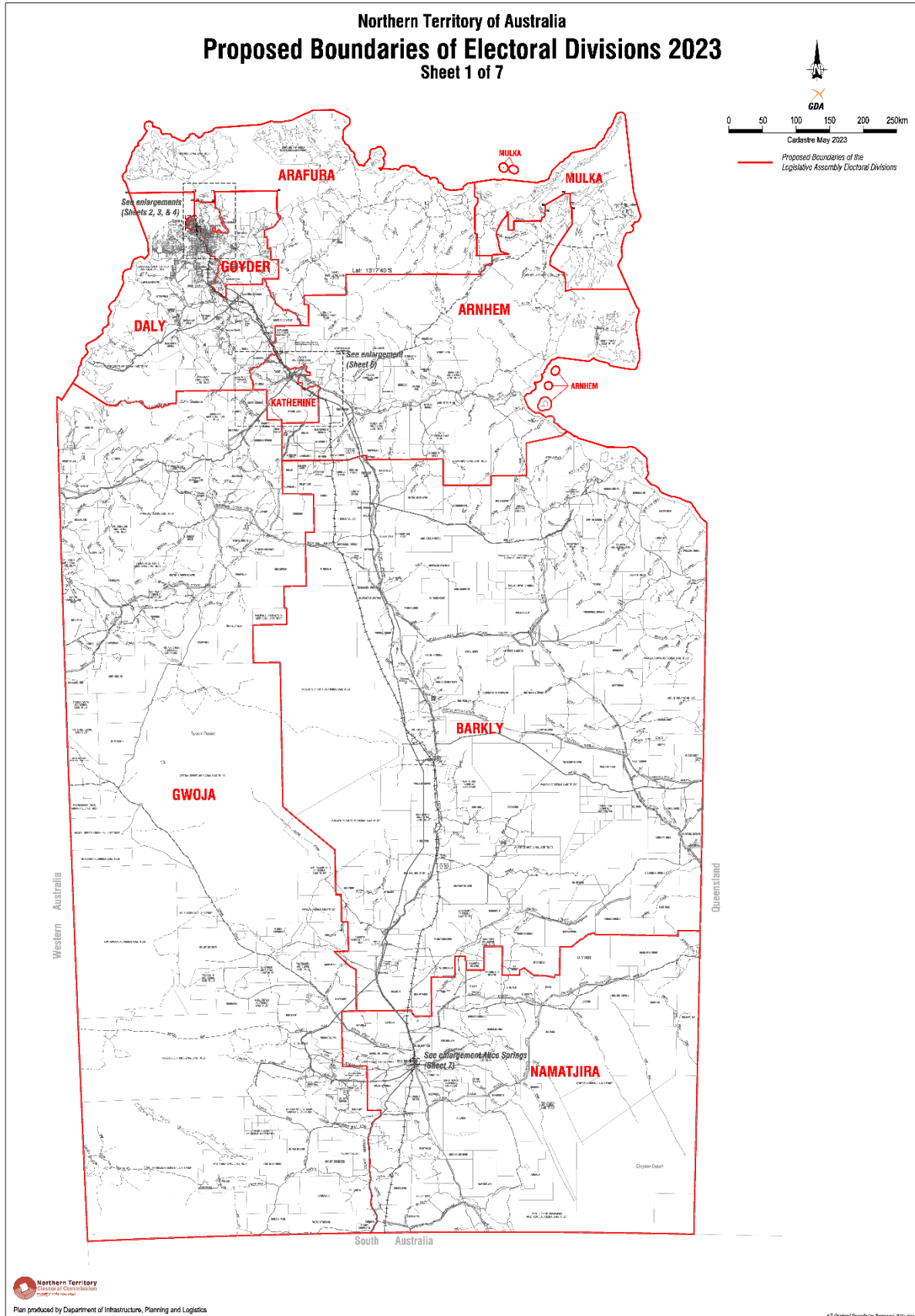
❖ **HAND:** Level 3, TCG Centre | 80 Mitchell Street | Darwin NT 0800 - Phone: 08 8999 5000

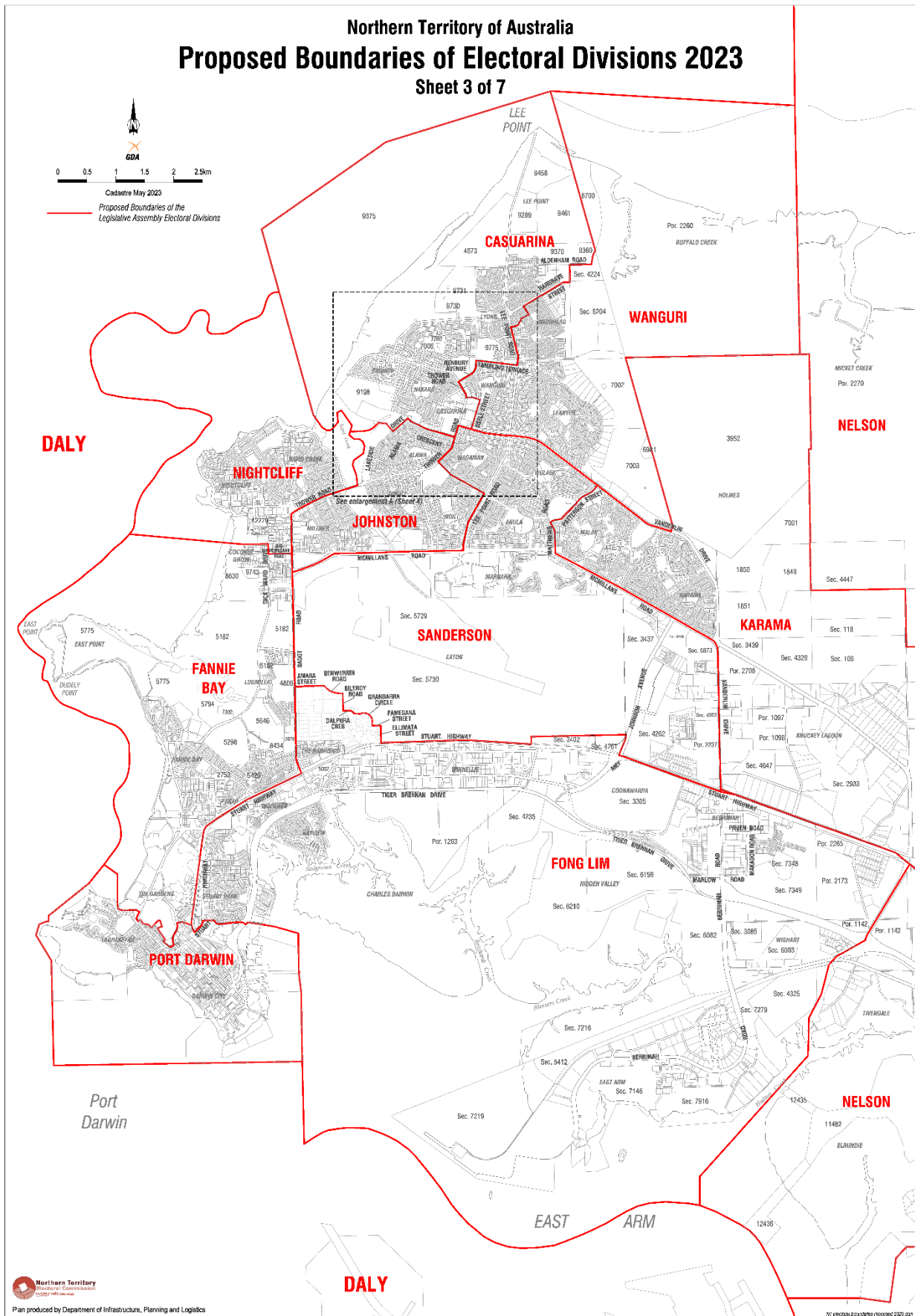
Please address submissions to: *The Redistribution Committee, c/o the NT Electoral Commission*

NOTE: All objections will be published on the NT Electoral Commission's website at www.ntec.nt.gov.au.

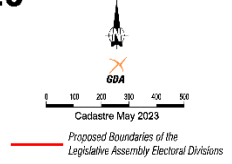
Appendix A

Series of 7 maps

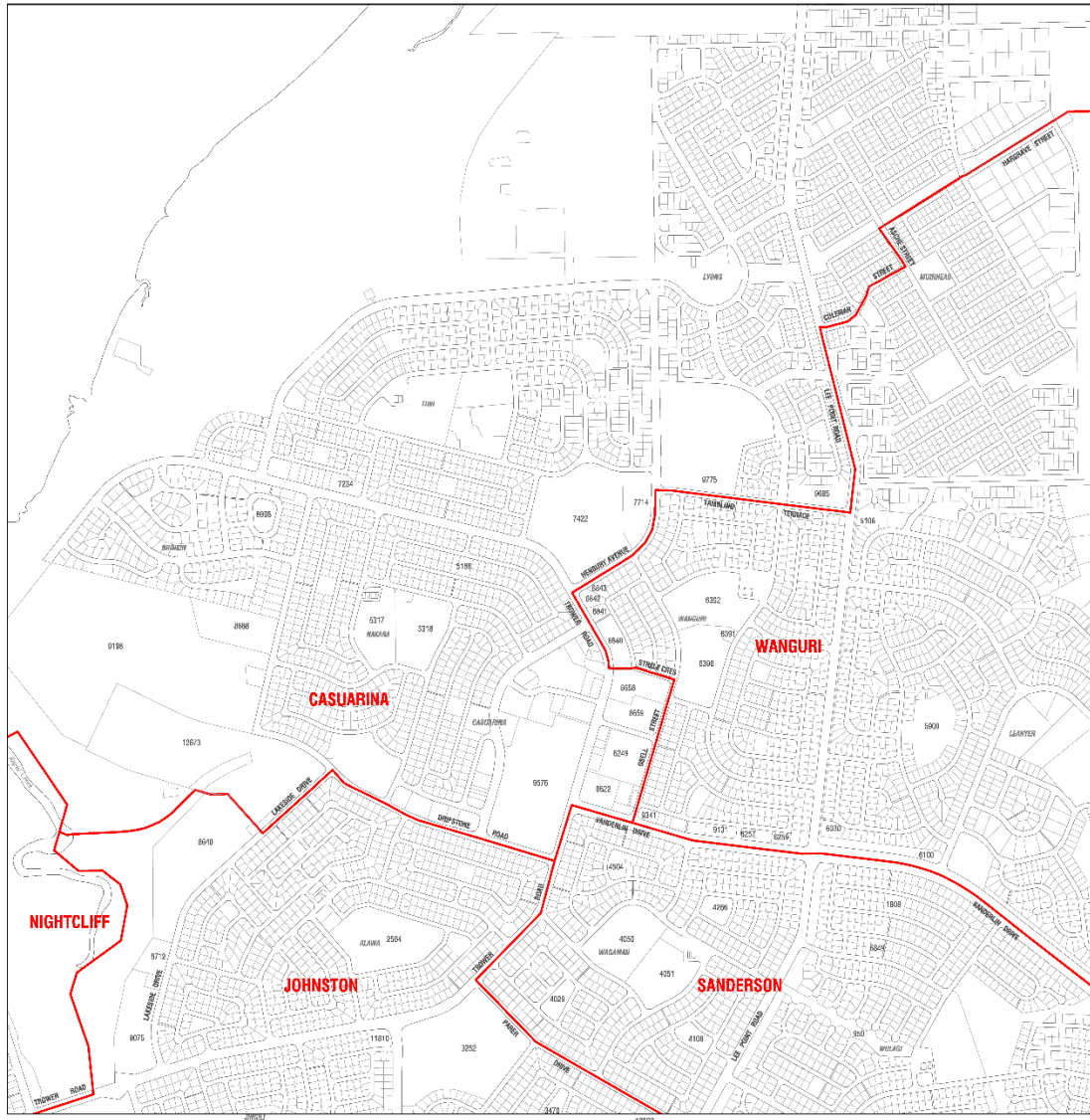


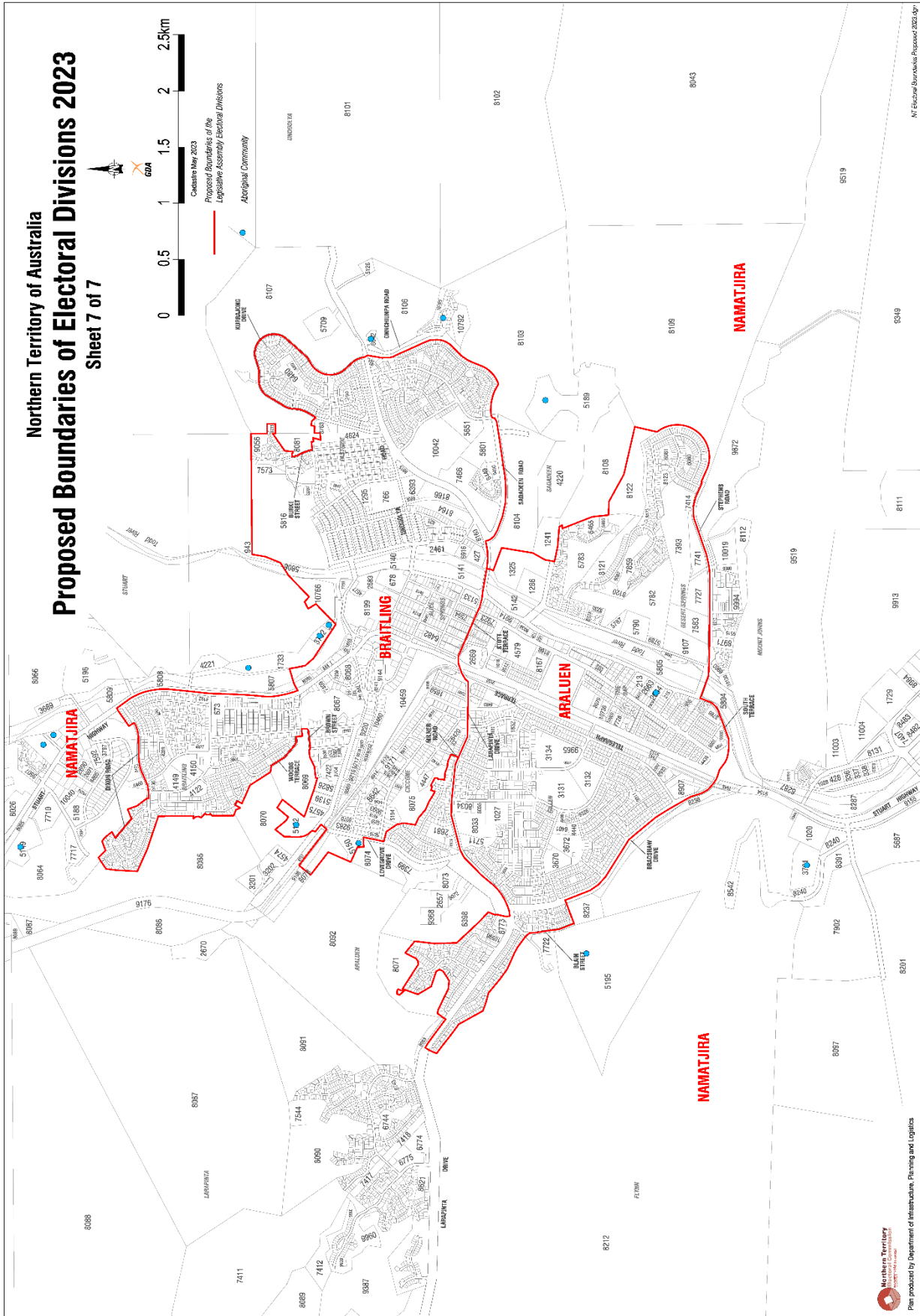


Northern Territory of Australia
Proposed Boundaries of Electoral Divisions 2023
Sheet 4 of 7



Enlargement A (not to scale)





Appendix B

Current and proposed division enrolment and variance from quota

Table (a) Current division enrolment and variance from quota			Table (b) Proposed divisions, enrolment and variance from quota		
Current division	Enrolment 17 April 2023	% Variance from quota	Proposed division	Enrolment 17 April 2023	% Variance from quota
Arafura	5,838	-1.2%	Arafura	5,838	-1.2%
Araluen	5,906	-0.1%	Araluen	5,906	-0.1%
Arnhem	5,822	-1.5%	Arnhem	5,822	-1.5%
Barkly	5,626	-4.8%	Barkly	5,626	-4.8%
Blain	5,922	0.2%	Blain	6,188	4.7%
Braitling	5,941	0.5%	Braitling	5,941	0.5%
Brennan	5,983	1.2%	Brennan	5,994	1.4%
Casuarina	5,813	-1.7%	Casuarina	5,673	-4.0%
Daly	6,086	3.0%	Daly	5,829	-1.4%
Drysdale	6,208	5.0%	Drysdale	6,125	3.6%
Fannie Bay	5,509	-6.8%	Fannie Bay	6,114	3.4%
Fong Lim	5,542	-6.2%	Fong Lim	5,751	-2.7%
Goyder	5,904	-0.1%	Goyder	5,904	-0.1%
Gwoja	5,410	-8.5%	Gwoja	5,667	-4.1%
Johnston	5,791	-2.0%	Johnston	5,759	-2.6%
Karama	5,752	-2.7%	Karama	5,785	-2.1%
Katherine	6,012	1.7%	Katherine	6,012	1.7%
Mulka	6,452	9.2%	Mulka	6,452	9.2%
Namatjira	5,830	-1.4%	Namatjira	5,830	-1.4%
Nelson	5,830	-1.4%	Nelson	6,040	1.9%
Nightcliff	5,746	-2.8%	Nightcliff	5,953	0.7%
Port Darwin	5,882	-0.5%	Port Darwin	5,882	-0.5%
Sanderson	5,556	-6.0%	Sanderson	5,810	-1.7%
Spillett	6,943	17.5%	Spillett	6,043	2.2%
Wanguri	6,494	9.9%	Wanguri	5,854	-1.0%
Total	147,798		Total	147,798	
Quota	5,911		Quota	5,911	

Appendix C

Summary of proposed transfers across divisional boundaries

There are no proposed changes to 9 divisions: Araluen, Arnhem, Barkly, Braitling, Goyder, Katherine, Mulka, Namatjira and Port Darwin and therefore no transfers of electors into or out of these divisions.

No electors (0) are recorded in some SA1s: this indicates an area where no electors are enrolled and this can be due to a number of factors for example, undeveloped land or commercial and industrial areas.

SA1s can be split and therefore the same number SA1 can be found in two or more divisions. Splitting SA1s is only done where necessary and SA1s are kept wholly in one division where possible. SA1s will be split along an existing border of some kind, such as a road, property line, suburb boundary or other.

SA1s split in previous redistributions can be joined together to make one whole SA1 again and is proposed to occur a number of times in this first proposed redistribution.

Arafura

From	To	SA1	Area	Electors
Starting enrolment				5,838
Transfers in				
Nelson	Arafura	(Split SA1) 7103301	Vernon Islands	0
Total				0
Transfers out - NIL				
Final enrolment				5,838

Araluen – no proposed changes

Arnhem – no proposed changes

Barkly – no proposed changes

Blain

From	To	SA1	Area	Electors
Starting enrolment				5,922
Transfers in				
Drysdale	Blain	7104001	Moulden	314
		7104002	Moulden	275
		7104003	Moulden	484
		7104004	Moulden	294
		7104006	Moulden	485
Spillett	Blain	7104202	Archer	2
Total				1,854

From	To	SA1	Area	Electors
Transfers out				
Blain	Brennan	7104301	Rosebery	256
		7104302	Rosebery	339
		7104308	Rosebery	303
		7104309	Rosebery	0
		7104310	Rosebery	188
		7104311	Rosebery	188
		7104319	Rosebery	314
Total				1,588
Final enrolment				6,188

Braitling – no proposed changes

Brennan

From	To	SA1	Area	Electors
Starting enrolment				5,983
Transfers in				
Blain	Brennan	7104301	Rosebery	256
		7104302	Rosebery	339
		7104308	Rosebery	303
		7104309	Rosebery	0
		7104310	Rosebery	188
		7104311	Rosebery	188
		7104319	Rosebery	314
Spillett	Brennan	7104202	Mitchell	1
		(Split SA1) 7104209	Zuccoli	82
		7104210	Zuccoli	388
		7104211	Zuccoli	160
		7104212	Zuccoli	264
		(Split SA1) 7104214	Mitchell/Zuccoli	0
		7104219	Zuccoli	358
Total				2,841
Transfers out				
Brennan	Drysdale	7104101	Gunn	226
		7104102	Gunn	362
		7104105	Gunn	269
		7104106	Gunn	297
		7104107	Gunn	209
		7104108	Gunn	274
		7104109	Gunn	132
Brennan	Spillett	7104111	Farrar	321
		7104112	Farrar	469
		7104113	Farrar	271
Total				2,830
Final enrolment				5,994

Casuarina

From	To	SA1	Area	Electors
Starting enrolment				5,813
Transfers in				
Wanguri	Casuarina	(Split SA1) 7102114	Muirhead	110
		7102115	Muirhead	268
		(Rejoin SA1) 7102116	Muirhead	262
Total				640
Transfers out				
Casuarina	Johnston	7101001	Alawa	197
		7101002	Alawa	314
		7101005	Alawa	269
		7101006	Alawa	0
Total				780
Final enrolment				5,673

Daly

From	To	SA1	Area	Electors
Starting enrolment				6,086
Transfers in - NIL				
Transfers out				
Daly	Gwoja	7106802	Timber Creek	158
		(Rejoin SA1) 7106808	Victoria Daly region	99
Total				257
Final enrolment				5,829

Drysdale

From	To	SA1	Area	Electors
Starting enrolment				6,208
Transfers in				
Brennan	Drysdale	7104101	Gunn	226
		7104102	Gunn	362
		7104105	Gunn	269
		7104106	Gunn	297
		7104107	Gunn	209
		7104108	Gunn	274
		7104109	Gunn	132
Total				1,769
Transfers out				
Drysdale	Blain	7104001	Moulden	314
		7104002	Moulden	275
		7104003	Moulden	484
		7104004	Moulden	294
		7104006	Moulden	485
Total				1,852
Final enrolment				6,125

Fannie Bay

From	To	SA1	Area	Electors
Starting enrolment				5,509
Transfers in				
Johnston	Fannie Bay	7101605	Coconut Grove	262
Nightcliff	Fannie Bay	7101604	Coconut Grove	343
Total				605
Transfers out - NIL				
Final enrolment				6,114

Fong Lim

From	To	SA1	Area	Electors
Starting enrolment				5,542
Transfers in				
Spillett	Fong Lim	7101202	Berrimah	0
		7101206	Berrimah	9
		7101208	Berrimah/Northcrest	189
		(Rejoin SA1) 7101501	Hidden Valley	0
		(Split SA1) 7101701	East Arm/Wishart	11
Total				209
Transfers out - NIL				
Final enrolment				5,751

Goyder – no change

Gwoja

From	To	SA1	Area	Electors
Starting enrolment				5,410
Transfers in				
Daly	Gwoja	7106802	Timber Creek	158
		(Rejoin SA1) 7106808	Victoria Daly region	99
Total				257
Transfers out - NIL				
Final enrolment				5,667

Johnston

From	To	SA1	Area	Electors
Starting enrolment				5,791
Transfers in				
Casuarina	Johnston	7101001	Alawa	197
		7101002	Alawa	314
		7101005	Alawa	269
		7101006	Alawa	0
Total				780

From	To	SA1	Area	Electors
Transfers out				
Johnston	Fannie Bay	7101605	Coconut Grove	262
Johnston	Nightcliff	7101607	Coconut Grove	261
		7101608	Coconut Grove	289
Total				812
Final enrolment				5,759

Karama

From	To	SA1	Area	Electors
Starting enrolment				5,752
Transfers in				
Nelson	Karama	7101203	Knuckey Lagoon	161
		7101205	Knuckey Lagoon	126
Wanguri	Karama	<i>(Split SA1)</i> 7101401	Holmes	0
Total				287
Transfers out				
Karama	Sanderson	7101207	Berrimah	216
		7101208	Marrara	38
Total				254
Final enrolment				5,785

Katherine – no proposed changes

Mulka – no proposed changes

Namatjira – no proposed changes

Nelson

From	To	SA1	Area	Electors
Starting enrolment				5,830
Transfers in				
Spillett	Nelson	<i>(Split SA1)</i> 7101701	Elrundie	8
		7103807	Pinelands	34
		7103812	Marlow Lagoon	131
		7103816	Marlow Lagoon	324
Total				497
Transfers out				
Nelson	Karama	7101203	Knuckey Lagoon	161
		7101205	Knuckey Lagoon	126
Nelson	Arafura	<i>(Split SA1)</i> 7103301	Vernon Islands	0
Total				287
Final enrolment				6,040

Nightcliff

From	To	SA1	Area	Electors
Starting enrolment				5,746
Transfers in				
Johnston	Nightcliff	7101607	Coconut Grove	261
		7101608	Coconut Grove	289
Total				550
Transfers out				
Nightcliff	Fannie Bay	(Split SA1) 7101604	Coconut Grove	343
Total				343
Final enrolment				5,953

Port Darwin – no proposed changes

Sanderson

From	To	SA1	Area	Electors
Starting enrolment				5,556
Transfers in				
Karama	Sanderson	7101207	Berrimah	216
		7101208	Marrara	38
Total				254
Transfers out - NIL				
Final enrolment				5,810

Spillett

From	To	SA1	Area	Electors
Starting enrolment				6,943
Transfers in				
Brennan	Spillett	7104111	Farrar	321
		7104112	Farrar	469
		7104113	Farrar	271
Total				1,061
Transfers out				
Spillett	Fong Lim	7101202	Berrimah	0
		7101206	Berrimah	9
		7101208	Berrimah/Northcrest	189
		(Rejoin SA1) 7101501	Hidden Valley	0
		(Split SA1) 7101701	East Arm/Wishart	11
Spillett	Nelson	(Split SA1) 7101701	Elrundie	8
		7103807	Pinelands	34

From	To	SA1	Area	Electors
Spillett	Nelson (cont.)	7103812	Marlow Lagoon	131
		7103816	Marlow Lagoon	324
Spillett	Blain	7104202	Archer	2
Spillett	Brennan	7104202	Mitchell	1
		<i>(Split SA1)</i> 7104209	Zuccoli	82
		7104210	Zuccoli	388
		7104211	Zuccoli	160
		7104212	Zuccoli	264
		<i>(Split SA1)</i> 7104214	Mitchell/Zuccoli	0
		7104219	Zuccoli	358
Total				1,961
Final enrolment				6,043

Wanguri

From	To	SA1	Area	Electors
Starting enrolment				6,494
<i>Transfers in - NIL</i>				
<i>Transfers out</i>				
Wanguri	Casuarina	<i>(Split SA1)</i> 7102114	Muirhead	110
		7102115	Muirhead	268
		<i>(Rejoin SA1)</i> 7102116	Muirhead	262
Wanguri	Karama	<i>(Split SA1)</i> 7101401	Holmes	0
Total				640
Final enrolment				5,854

Total enrolment: 147,798

