



Northern Territory  
Electoral Commission

# Annual report

## 2022-23



**ISSN: 1835-0356 (Print)**  
**ISSN: 1835-0364 (Online)**

© 2023. This publication is copyright.

No part may be reproduced by any process, except in accordance with the *Copyright Act 1968*. For requests concerning reproduction and rights please direct all enquiries to the Northern Territory Electoral Commission.

Darwin  
Level 3  
TCG Centre  
80 Mitchell Street

GPO Box 2419  
DARWIN NT 0801

Phone: 08 8999 5000  
Fax: 08 8999 7630  
Email: [ntec@nt.gov.au](mailto:ntec@nt.gov.au)



# Contents

Letter to the Speaker.....	4
Foreword.....	5
Agency overview.....	6
Agency functions .....	9
Enrolment .....	10
Elections .....	16
Public awareness .....	22
Corporate .....	24
Financial report.....	29
Financial statement overview .....	32

# Letter to the Speaker

Mister Speaker,

I am pleased to provide the Annual Report of the Northern Territory Electoral Commission for the 2022-23 reporting year.

The report details the commission's performance, key achievements and outlook for the year ending 30 June 2023. It was prepared in accordance with the *Public Sector Employment and Management Act 1993*, the *Financial Management Act 1995* and the *Information Act 2002*.

Additional copies have been provided for tabling in the Legislative Assembly within three sitting days after its receipt.

Yours sincerely,



**Iain Loganathan**  
Northern Territory Electoral Commissioner

**29 October 2023**

# Foreword



Over the past year, the Northern Territory Electoral Commission (NTEC) has overseen a large number of elections, ranging from Legislative Assembly and local government by-elections to government enterprise agreement ballots and other fee-for-service elections.

Throughout, the NTEC has continued to uphold our commitment to transparency, professionalism, and the democratic process within the Northern Territory. This is demonstrated across all facets of our agency including the management of elections, enrolment, public awareness and electoral education initiatives. I am pleased to highlight some key accomplishments and milestones from the 2022-2023 reporting year:

- **Launch of our Strategic Plan 2022-26:** The NTEC's strategic plan provides a clear roadmap for the future, guiding us in our mission to continuously improve and modernise our electoral processes.
- **Launch of our new website:** We recognise the importance of using technology to engage the public. Our new website aims to make voter engagement more accessible and user-friendly.
- **Completion of the inaugural 2022 Local Government Representation Reviews:** Legislative changes from the *Local Government Act 2019* established an independent Local Government Representation Committee tasked with determining ward boundaries and representation the Territory's 17 councils. The outcomes of these reviews will come into effect at the 2025 local government general elections after final determinations are made by the Minister.
- **Commencement of the 2023 NT Electoral Boundary Redistribution:** Every 4 years, Legislative Assembly electoral boundaries are reviewed to ensure equitable representation across the 25 divisions. This review, involving multiple stages of public consultation, may result in the movement of areas and electors to different divisions to achieve balance. Any changes resulting from the redistribution will be implemented at the next general election.

None of these accomplishments would have been possible without the hard work, dedication, and professionalism of the NTEC's staff. I want to extend my gratitude to every member of our team for their tireless efforts and unwavering commitment to the principles of democracy.

I must also acknowledge the significant enrolment activities coordinated by the Australian Electoral Commission (AEC) which has seen enrolment participation in the Northern Territory increase to 91.7%. This compares to 86.2% at the 2020 Territory Election. The increase in enrolment is largely in the Northern Territory's remote areas.

However, despite positive enrolment trends, the core challenge for the NTEC remains low voter turnout. There have been notable declines in voter turnout at local government and Legislative Assembly by-elections this reporting year, not only in remote areas but also in urban centres.

In closing, I want to express my gratitude to the elected representatives, political parties, candidates, and, most importantly, Territorians. Your continued participation is fundamental to upholding democracy in the Northern Territory.

A handwritten signature in black ink, appearing to read 'Iain Loganathan'. The signature is fluid and cursive, with a long horizontal stroke at the end.

**Iain Loganathan**  
Northern Territory Electoral Commissioner

# Agency overview

The NTEC is an independent statutory authority responsible for ensuring the impartial conduct of elections in the Northern Territory. Operating under its enabling legislation, the *Electoral Act 2004*, the NTEC also administers Chapter 8 of the *Local Government Act 2019*, the Local Government (Electoral) Regulations 2011, the *Referendums Act 1998*, and other relevant legislation.

The work of the NTEC aligns to a four-year electoral cycle, with the next Legislative Assembly general election scheduled for August 2024 and local government general elections scheduled for August 2025. The phases of the electoral cycle are shown in the diagram.



The primary functions of the NTEC are:

- Manage Legislative Assembly and local government elections
- Participate and support the Legislative Assembly electoral boundary redistribution and local government representation reviews
- Financial disclosure
- Education and engagement
- Fee for service elections
- Election expertise, research and system management
- Corporate management

## Key activity outside of the election cycle

- █ Scheduled
- █ On request

	2022		2023		2024		2025		2026	
	First half	Second half	First half	Second half	First half	Second half	First half	Second half	First half	Second half
Local government representative reviews										
Legislative Assembly electoral boundary redistribution										
Financial disclosure*										
Election management system remediation and replacement **										
Fee-for-service elections/ballots										
Education events	●●●●●●	●●●●●●	●●●●●●	●●●●●●	●●●●●●	●●●●●●	●●●●●●	●●●●●●	●●●●●●	●●●●●●
Corporate activities										

Note\* additional obligations during election events

Note \*\* replacement subject funding approval

# Strategic Plan 2022-26

## Purpose

Provide independent and high quality electoral services to Territorians.

## Vision

Maintain public confidence in electoral processes in the Northern Territory and to raise awareness to support participation.

## Values

- **Collaborate:** We are inclusive and work with our stakeholders and Territorians for the best outcome.
- **Integrity:** We conduct ourselves in a fair, honest and ethical manner in everything we do.
- **Professional:** We are committed to providing high quality, efficient and client focussed services to stakeholders and Territorians.
- **Trust:** Stakeholders and Territorians are confident that we deliver fair and transparent services to a high standard.

## Strategic goals

### Accessible, transparent and impartial elections in the Northern Territory

What we must achieve:

- Standardised practices in all election events
- Transparency in the electoral process through timely reporting and accessible electoral information
- Participation in and support for the electoral boundary redistribution process for Legislative Assembly and representation reviews for local government
- System stability and security, maintaining high integrity in the delivery of election events

What are our outcomes:

- Implement an election cycle which identifies phases and key activities
- Service Plan in place for each general election supporting the management of the election and stakeholder awareness
- Improved satisfaction from voters and stakeholders in the conduct of elections
- Roles and responsibilities for election management system activities are clearly defined, documented with security and testing events scheduled

- Processes are in place that support the timely allocation of resources to support boundary redistribution and representation reviews

### Electoral awareness, engagement and participation

What we must achieve:

- Develop a stakeholder engagement plan identifying key stakeholders, their defined interest and influence with actions to support engagement across the election cycle
- Effective strategies that promote awareness and participation in elections
- Deliver programs and activities that provide education and awareness about democracy, civics and elections for young Territorians
- Deliver activities that inform and raise awareness of electoral rights and responsibilities for voters, political parties and candidates
- Deliver strategic communication campaigns identifying opportunities for collaboration with key stakeholders to improve understanding of electoral processes and laws
- Maximise the use of data to support targeted communications and engagement activities

What are our outcomes:

- Relationships with key stakeholders are developed and maintained aimed at raising awareness of election events, processes and service offerings to support participation
- Increased attendance at events including, forums, expos, workshops etc.
- Increased interactions by stakeholders with NTEC communication channels
- Improved distribution and reach in communications across the election cycle
- Increased voter participation and decrease in the number of informal votes
- Territorians are aware of the role and functions of the NTEC

### Continued improvement in electoral services

What we must achieve:

- Implement recommended electoral service improvements and electoral reforms following evaluation of elections

- Develop and maintain election policies, operating procedures and control plans to support elections
- Create opportunities to collaborate with stakeholders on the provision of electoral services provided by the NTEC
- Develop a research plan identifying projects to be progressed within the NTEC and more complex projects requiring broader investment and support
- Increased use of data to support evidence based electoral service improvements.
- Maximise opportunities across the NT Government shared service environment to support electoral service delivery e.g. systems security and support, critical infrastructure and workforce service support
- Grow partnerships with other electoral commissions, leveraging opportunities and capabilities

What are our outcomes:

- Implementation of agreed electoral service improvements in a timely manner in accordance with an approved implementation and change management plan
- Demonstrated successful performance of election management and supporting infrastructure without incident
- NTEC membership and participation in the Electoral Council of Australia and New Zealand (ECANZ)
- Steering groups established with regular meetings scheduled with shared service agencies in key portfolio areas including, finance, properties, information and communications technology, fleet, workforce services
- Debriefing sessions offered to all clients following election events

## Cultivate a high performing organisation

What we must achieve:

- Implement an organisation structure responsive to NTEC statutory responsibilities, strategic and corporate functions
- Attract, recruit and retain a diverse and inclusive workforce with the necessary skills and capabilities across the electoral cycle
- Invest in our workforce to grow and develop capabilities

- Invest in infrastructure to support the functions of the NTEC
- Compliance within the NT Government operating environment, e.g. financial, procurement, human resources, privacy, information and records management

What are our outcomes:

- Organisation structure is in place and is aligned to the capabilities required to support the functions of the NTEC across the electoral cycle
- Workforce strategy in place that is responsive to the capability and resource requirements across the electoral cycle
- NTEC is compliant in government business practices evidenced through satisfactory audit outcomes
- Training resources to support election events are contemporary and accessible
- NTEC staff have My Plans in place (excluding casual event staff)
- High levels of staff satisfaction

## Awareness and compliance with electoral laws

What we must achieve:

- Develop and communicate the regulatory approach to be adopted by the NTEC (i.e. constructive compliance approach)
- Create opportunities to promote and support an understanding of electoral laws that are relevant to them, e.g. voters, political parties, candidates, third party campaigners, associated entities, donors and media
- Develop a risk-based compliance plan aligned with electoral legislation to promote public confidence

What are our outcomes:

- Electoral education sessions are scheduled and information resources are available to support stakeholders in understanding their rights and responsibilities
- Increase in the number of financial returns submitted within the required timeframes
- Compliance checks carried out in accordance with the NTEC compliance plan



Agency  
functions

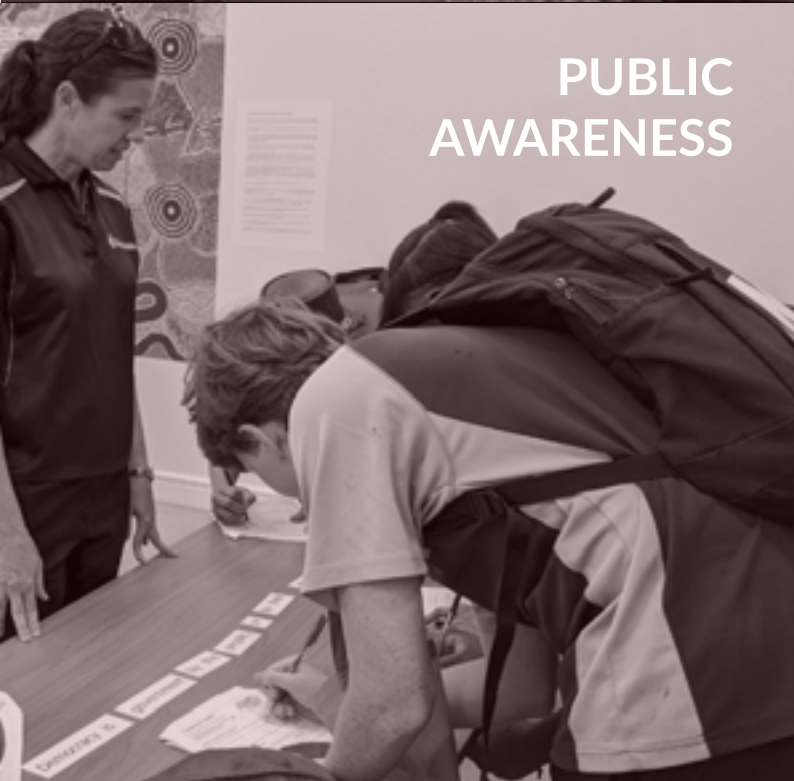
ENROLMENT



ELECTIONS



PUBLIC  
AWARENESS



CORPORATE



# Enrolment

Contribute to the maintenance and security of a joint roll of eligible Northern Territory electors.



As at 30 June 2023, the number of enrolled Territorians was 152,429, an increase of 7,356 (or 5.1%) from the previous financial year.



The AEC's State of the Roll report puts the NT's enrolment participation rate at 92.0% compared to a national rate of 97.5%, at 30 June 2023.



The report estimates there are 13,360 eligible Territorians not on the electoral roll.



The federal direct enrolment update and online enrolment continue to be the main source of enrolment in the NT.

## Northern Territory electoral roll

As provided by the *Northern Territory (Self-Government) Act 1978 (Cth)*, the enrolment provisions of the *Commonwealth Electoral Act 1918* apply for electors in the Northern Territory. Therefore, if an eligible person residing in the Territory is enrolled on the Commonwealth electoral roll, they are automatically enrolled for NT Legislative Assembly and NT local government elections.

### Joint electoral roll arrangement

The NT electoral roll is managed by the Australian Electoral Commission (AEC) under a joint roll arrangement between the Governor-General and the Administrator of the Northern Territory (as per section 20 of the *Electoral Act 2004*). This arrangement has been in place since 1994.

The AEC is responsible for:

- Processing enrolments and amendments to enrolments (including the federal direct enrolment update program)
- Maintaining the quality of the roll by undertaking enrolment stimulation activities
- Reviewing the accuracy of elector and address information
- Removing electors from the roll where there is evidence they are no longer residing at their enrolled address.
- Managing the geographic and electoral boundary information that underpins the electoral roll

The NTEC assists electors to follow the appropriate process to enrol or update their enrolment with the AEC, including performing its own enrolment stimulation activities in the lead up to general elections and by-elections.

The NTEC can request roll products from the AEC at any time, and has read only access to the Commonwealth and NT electoral rolls.

### Electoral roll status

During the reporting period, the NT's electoral roll increased by 7,356 electors to a total of 152,429 as at 30 June 2023. While the NT electoral roll steadily grows each year, this reporting year has seen unprecedented growth, with an increase 3 times the amount seen in the previous year (see table 1).

This growth is mostly due to the expansion of the AEC's federal direct enrolment update (FDEU) program, which previously only operated in urban areas of the NT but now includes regional and remote areas. Additionally, enrolment activities in the lead up to the 'Voice' constitutional referendum have also contributed to the NT's significant elector growth.

The AEC's State of the Roll<sup>1</sup> report puts the NT's enrolment participation rate at 92.0% (up from 88.3% in 2021-22) with the national enrolment rate at 97.5% (up from 97.1% in 2021-22). The report estimates that there are 13,360 eligible Territorians not on the roll as at 30 June 2023, which is down from 19,430 in 2021-22. The report also put the youth enrolment rate for the NT at 79.3%, which is up from 64.1% in the previous year. This is lower than the national youth enrolment participation rate of 90.3%.

### Federal direct enrolment update (FDEU)

Part of the joint roll arrangement involves the AEC running its FDEU program in the Northern Territory. The FDEU program and the AEC's online enrolment service are now the top 2 sources of enrolment nationally and in the NT.

The FDEU program commenced in the NT in February 2013, and uses data from trusted third parties (like Centrelink and the Australian Tax Office) to identify electors who have moved or need to be enrolled. Electors identified through this process are sent a letter informing them that the AEC will enrol or update their enrolment unless the person replies with further information. If the AEC has any doubt about the validity of information, it is not applied to the roll.

However, until 2022 the FDEU program required mail delivery to a street address which meant it did not operate in rural and remote areas of the NT. A trial was conducted in September 2022 which expanded the program to include people residing in remote communities who were eligible but not yet enrolled, and who received their mail via a community mail bag or had an email address. The trial included 60 remote communities, 43 of which were in the NT.

Following the success of the trial, the AEC announced in April 2023 that sending FDEU correspondence to community mail bags and email addresses would be an ongoing part of the program.

**Table 1: Estimated eligible voter participation on the electoral roll – 2014 to 2023**

Participation rates 2014 to 2023 (as at 30 June)			
Year	Area	% Total enrolment	% 18-24 years enrolment
2016	NT	81.4	63.4
	National	93.9	87.0
2017	NT	82.7	64.5
	National	95.0	85.7
2018	NT	83.9	64.7
	National	96.3	86.9
2019	NT	84.3	66.4
	National	97.1	88.9
2020	NT	85.0	62.9
	National	96.5	85.8
2021	NT	85.7	63.0
	National	96.2	94.5
2022	NT	88.3	64.1
	National	97.1	88.4
2023	NT	92.0	79.3
	National	97.5	90.3

Percentages are calculated based on federal divisions and the NT's Lingiari division includes Christmas Island and Cocos (Keeling) Island.

<sup>1</sup>The AEC's State of the Roll report uses federal divisions to calculate enrolment rates. The NT federal division of Lingiari includes Christmas Island and Cocos (Keeling) Island.

There have also been further FDEU activities conducted by the AEC in the lead up to the 'Voice' constitutional referendum scheduled for October 2023. In particular, a major mail out occurred in May and June 2023 where eligible but unenrolled Aboriginal people nationally (sourced from Centrelink data) were targeted. This resulted in over 4,000 new enrolments in the Northern Territory alone, most of which were applied to the roll before 30 June 2023.

The following statistics are from FDEU processing within the NT from 1 July 2022 to 30 June 2023:

- 17,567 FDEU letters sent (this includes some email notifications)
- 12,801 people directly enrolled/updated as a result of letters sent
- 501 electors provided a suitable reason as to why their enrolment should not be updated
- 180 electors enrolled or updated their enrolment by other means after the letter was sent

### Provisional enrolment for NT elections

Amendments in recent years to both the *Electoral Act 2004* and the *Local Government Act 2019* created a savings provision that allows eligible electors who are not enrolled in the NT to cast a declaration vote at

Legislative Assembly and local government elections, including by-elections. Once they are deemed eligible to be an elector, with their enrolment processed by the AEC (declaration envelopes are forwarded to the AEC immediately after election day) their votes are admitted to the count. Previously, and currently in some other jurisdictions, eligible electors found to be unenrolled at the close of roll date for any election would have their enrolment updated, but their votes would not be counted until the next time they voted.

This provisional voting for unenrolled electors was mostly aimed at addressing the inadequate enrolment of Aboriginal eligible electors in remote parts of the Territory who were not captured in the AEC's FDEU program at the time of the amendments. It also assists electors who have recently moved to the NT, but did not update their enrolment before the close of roll for an election. The savings provision does not permit electors who are enrolled for an incorrect NT address to cast a provisional vote at their new address, although they retain the right to vote for the previous address they are enrolled at.

Table 2 below shows the number of accepted declaration votes (and therefore new NT enrolments) across all relevant elections for the 2022-23 reporting year.

**Table 2: Number of enrolments resulting from provisional declaration voting at NT elections 2022-23**

Election	No. of accepted declaration votes
Division of Fannie Bay by-election	18
Division of Arafura by-election	244
East Arnhem Regional Council, Gumurr Miwatj Ward by-election (2022)	11
City of Darwin, Waters Ward by-election	24
Alice Springs Town Council by-election	71
East Arnhem Regional Council, Gumurr Miwatj Ward by-election (2023)	8
Barkly Regional Council, Patta Ward by-election	43
MacDonnell Regional Council, Luritja Pintubi Ward by-election	5
<b>TOTAL</b>	<b>424</b>

## Enrolment statistics

Table 3: Enrolment transactions – additions, deletions, transfers and amendments to the NT roll

	2018-2019	2019-2020	2020-2021	2021-2022	2022-2023
<b>Enrolment at 1 July</b>	<b>137,640</b>	<b>139,108</b>	<b>139,841</b>	<b>142,715</b>	<b>145,073</b>
<b>ADDITIONS</b>					
New enrolments	4,637	3,522	4,643	4,955	10,166
Re-enrolments	1,302	666	992	767	1,604
Re-instatements	9	3	8	8	41
Interstate transfers to NT	9,236	5,941	6,856	8,648	6,367
<b>Total additions</b>	<b>+15,184</b>	<b>+10,132</b>	<b>+12,499</b>	<b>+14,378</b>	<b>+18,178</b>
<b>DELETIONS</b>					
Removals by objection	793	822	557	310	1,400
Deaths	770	823	797	901	982
Duplications	48	328	164	59	119
Cancellations	11	30	40	11	65
Interstate transfers out of NT	12,094	7,396	8,067	10,739	8,256
<b>Total deletions</b>	<b>-13,716</b>	<b>-9,399</b>	<b>-9,625</b>	<b>-12,020</b>	<b>-10,822</b>
<b>Net increase/decrease</b>	<b>+1,468</b>	<b>+733</b>	<b>+2,874</b>	<b>+2,358</b>	<b>+7,356</b>
<b>AMENDMENTS</b>					
Transfers between divisions	10,582	8,390	9,411	10,068	9,155
Changes within divisions	4,821	3,569	3,849	4,098	3,521
Amendments to elector details	3,477	1,602	3,618	4,533	2,021
<b>Enrolment at 30 June</b>	<b>139,108</b>	<b>139,841</b>	<b>142,715</b>	<b>145,073</b>	<b>152,429</b>

Data provided by the Australian Electoral Commission

Notes for table 3:

- New enrolments - all electors who enrolled for the first time.
- Re-enrolments - re-enrolling electors who previously had been enrolled but were deleted.
- Re-instatements - the re-instatement of electors to the roll removed previously based on the receipt of new information that they still reside at their earlier enrolled address.
- Interstate transfers to NT - transfers of enrolment to a NT address from interstate.
- Removals by objection - electors removed from the roll, generally on the ground that they are apparently no longer resident at their enrolled address.
- Duplications - removal of a duplicate entry on the roll due to an official error e.g. a transfer of enrolment not matched to an existing enrolment.
- Cancellations - removals of electors from the electoral roll who have not maintained their eligibility for enrolment under the *Commonwealth Electoral Act 1918*, including those moved to provisional enrolment status.
- Interstate transfers out of NT - electors previously enrolled in the NT transferring their enrolment to another jurisdiction.
- Transfers between divisions/changes within divisions - electors notifying a change of address to another NT Legislative Assembly division or within same division. Transfers within NT do not alter total enrolment.
- Amendments - changes to enrolment details other than name or enrolled address e.g. amendment to mail delivery address, council re-numbering of street addresses.

Table 4: Enrolment by NT Legislative Assembly division – at 30 June 2023

Division		Division		Division	
Arafura	6,173	Drysdale	6,452	Namatjira	6,318
Araluen	6,034	Fannie Bay	5,583	Nelson	5,845
Arnhem	6,252	Fong Lim	5,585	Nightcliff	5,808
Barkly	6,145	Goyder	5,954	Port Darwin	5,886
Blain	6,042	Gwoja	5,979	Sanderson	5,582
Braitling	6,110	Johnston	5,848	Spillett	6,986
Brennan	6,032	Karama	5,930	Wanguri	6,537
Casuarina	5,851	Katherine	6,150	<b>Total</b>	<b>152,429</b>
Daly	6,335	Mulka	7,012		

Table 5: Enrolment by NT local government area – at 30 June 2023

Local government area		Local government area		Local government area	
Alice Springs	16,759	Katherine	6,727	Wagait	317
Barkly	4,524	Litchfield	13,054	West Arnhem	4,345
Belyuen	163	MacDonnell	4,059	West Daly	2,205
Central Desert	2,756	Palmerston	25,354	Unincorporated	3,545
Coomalie	697	Roper Gulf	4,416	<b>Total</b>	<b>152,429</b>
Darwin	52,457	Tiwi Islands	1,828		
East Arnhem	7,319	Victoria Daly	1,904		



## 2022 Local Government Representation Reviews

Legislative changes in the *Local Government Act 2019* established an independent Local Government Representation Committee to make determinations about ward boundaries and representation for all of the Territory's councils. The committee consists of the CEO of the Local Government Association of the NT, the Electoral Commissioner and the Surveyor-General. In making its determinations, the committee must conduct consultation with councils and the public in a similar way to the consultation conducted by the Redistribution Committee for Legislative Assembly electoral boundary redistributions.

Previously, councils conducted their own representative reviews and made recommendations about any desired changes to the Minister for Local Government, who would then make any final decisions. The Minister is still responsible for representation and boundary decisions not within the scope of the committee like the external boundaries of councils and the total number of elected members of a council, however the committee can make recommendations on these matters.

The inaugural Local Government Representation Committee commenced the first reviews under the new legislation in late March 2022 with a preliminary report released in August 2022. The final report was released in February 2023 where the committee determined no changes for 16 of the NT's 17 local government councils, but introduced a 3 ward structure to the City of Palmerston with a recommendation to increase the number of councillors from 7 to 8. The names of the new wards are to be determined by the Minister.

Determinations resulting from the review will take effect at the next local government general elections scheduled for August 2025.

## 2023 NT Electoral Boundary Redistribution

The NT's Legislative Assembly electoral boundaries are reviewed every 4 years in the 18 month period prior to the next general election. The review process aims to ensure that the number of electors in each division is as near to equal as practicable, and includes several stages of public consultation.

The 2023 NT Electoral Boundary Redistribution commenced in February 2023 with a Redistribution Committee made up of the Electoral Commissioner, Auditor-General, Surveyor-General and an appointed independent chair.

During the reporting period the Redistribution Committee invited suggestions from the public, as well as comments on the suggestions received. The first proposed redistribution report was released in May 2023, which was followed by a public objection period.

A second proposed redistribution report was released in August 2023 and a second public objection period commenced. During this period the committee announced that due to the consultation periods conducted so far, as well as the release of the 2 reports, not being gazetted as per the *Electoral Act 2004*, these stages of the redistribution would be repeated. The committee released a revised timeline with the final report scheduled to be released by the end of 2023.

The final determined boundaries are to take effect at the next Territory Election in August 2024.

## Supply of electoral roll data

The *Electoral Act 2004* requires NTEC to keep a roll for each division. An electoral roll extract is to be available for public inspection at the NTEC office, and can be provided in limited circumstances as per the *Electoral Act 2004* and the joint roll arrangement.

During 2022-23, electoral roll extracts were provided for the following:

- Division extracts to independent MLA's for that division each month
- Extract of all divisions to each registered party each month
- Alice Springs and Darwin extracts to the relevant Sheriff's office for jury lists
- Council ward extracts to regional councils where a council delivery centre provided voting services during a by-election
- Nhulunbuy extract to the Nhulunbuy Town Board for the conduct of a board election.

# Elections

Conduct elections that are impartial, efficient, transparent and in accordance with the law.



In the reporting year, the NTEC conducted:

- 15 local government by-elections
- 2 Legislative Assembly by-elections (for the divisions of Fannie Bay and Arafura)
- 8 enterprise agreement ballots for the NT Government
- 5 other fee-for-service elections
- 11 school elections (for student leaders)

## Legislative changes – *Electoral Act 2004*

There were no legislative amendments to the *Electoral Act 2004* or the *Electoral Regulations 2004* during the reporting period.

## Legislative changes – *Local Government Act 2019*

There were no legislative amendments to Chapter 8 of the *Local Government Act 2019* that refers to local government elections nor the *Local Government (Electoral) Regulations 2019* during the reporting period.

However the new *Local Government Act 2019*, which came into effect 1 July 2021 introduced a donations disclosure scheme for local government elections.

The new disclosure requirements require all candidates in local government general elections and by-elections to submit a campaign donation return that covers a prescribed disclosure period.

The disclosure requirements came into effect on 1 July 2022 and were therefore applicable for all the local government by-elections during the reporting year.

## NT Legislative Assembly general election

The next Legislative Assembly general election is scheduled for 24 August 2024.

## NT Legislative Assembly by-elections

There were 2 by-elections for the Legislative Assembly during the 2022-23 reporting year.

The former Chief Minister Michael Gunner resigned as the Member for Fannie Bay on 27 July 2022. The writ for the Fannie Bay by-election was issued the following day with election day scheduled for Saturday 20 August. The writ was returned on 29 August declaring Brent Potter (ALP) as the newly elected Member for Fannie Bay.

The second by-election was held due to the passing of the former Member for Arafura on 17 December 2022. Due to the time of year and for cultural reasons, the writ was not issued until 23 February with election day scheduled for Saturday 18 March. The writ was returned on 20 March declaring Manuel Brown (ALP) as the newly elected Member for Arafura.

Further details about the 2 by-elections can be found in tables 6 and 7 below.

**Table 6: Statistical summary of the Fannie Bay by-election**

<b>Issue of writ</b>	Thursday 28 July 2022					
<b>Close of electoral roll</b>	5pm, Friday 29 July 2022			Total enrolment: 5,439		
<b>Close of nominations</b>	12 noon, Thursday 4 August 2022			Number of candidates: 6		
<b>Election day</b>	Saturday 29 August 2022					
<b>Election costs</b>	\$145,874 (which equates to \$26.82 per enrolled elector)					
<b>Voter turnout</b>	65.9% (votes counted vs enrolment)					
<b>Votes</b>	Early	Postal	Urban mobile	Election day	Declaration	Total 3,582
	1,213 (33.9%)	390 (10.9%)	17 (0.5%)	1,944 (54.3%)	18 (0.5%)	

**Table 6: Statistical summary of the Arafura by-election**

<b>Issue of writ</b>	Thursday 23 February 2023					
<b>Close of electoral roll</b>	5pm, Friday 24 February 2023			Total enrolment: 5,536		
<b>Close of nominations</b>	12 noon, Thursday 2 March 2023			Number of candidates: 3		
<b>Election day</b>	Saturday 18 March 2023					
<b>Election costs</b>	\$191,325 (which equates to \$34.56 per enrolled elector)					
<b>Voter turnout</b>	58.1% (votes counted vs enrolment)					
<b>Votes</b>	Early	Postal	Remote mobile	Urban mobile	Declaration	Total 3,214
	67 (2.1%)	92 (2.9%)	2,802 (87.0%)	9 (0.3%)	244 (7.6%)	

Further information regarding the Fannie Bay and Arafura by-elections can be found in their election reports on the NTEC website.

## NT local government general elections

The next general elections for the Territory's 17 local government councils is scheduled for August 2025.

## NT local government by-elections

Section 54(2)(c) of the *Local Government Act 2019* requires a by-election to be held where a casual vacancy occurs 18 months or more before the next general election. Section 136(7) of the Act allows a council to appoint their CEO or another person (other than the Electoral Commissioner) to be the returning officer for the by-election. To date all by-elections for local government councils in the NT have been conducted by the NTEC. Councils are charged on a marginal cost recovery basis and which includes a 15% corporate overhead fee.

During 2022-23, the NTEC conducted 15 local government by-elections (based on those by-elections where election day, or the final day of voting, was scheduled during the reporting year). Table 8 provides a summary of these by-elections. Further details, including election results can be found on the NTEC website.

**Table 8: Summary of NT local government by-elections conducted during 2022-23**

Council	Ward	Election day	No. of vacancies	No. of nominations	Turnout*	Cost (incl. GST)
Roper Gulf Regional Council	Numbulwar Numburindi Ward	8 July 22	1	1	uncontested	\$1,082
East Arnhem Regional Council	Gumurr Miyarrka Ward	10 August 22	1	1	uncontested	\$1,150
East Arnhem Regional Council	Anindilyakwa Ward	10 August 22	1	1	uncontested	\$1,150
City of Darwin	Waters Ward	27 August 22	1	3	49.8%	\$101,482
Wagait Shire Council	-	17 September 22	1	3	69.8%	\$8,533
Alice Springs Town Council	-	29 September 22	1	5	49.2%	\$139,481
Central Desert Regional Council	Anmatjere Ward	24 November 22	1	0	failed	\$974
West Arnhem Regional Council	Gunbalanya Ward	18 March 23	1	2	54.7%	\$2,365
East Arnhem Regional Council	Gumurr Miwatj Ward	5 May 23	1	2	9.6%	\$23,039
Barkly Regional Council	Alyawarr Ward	6 May 23	2	2	uncontested	\$60,757 combined
Barkly Regional Council	Patta Ward	6 May 23	2	6	37.8%	
Central Desert Regional Council	Anmatjere Ward (supplementary)	16 June 23	1	1	uncontested	\$974 combined
Central Desert Regional Council	Southern Tanami Ward	16 June 23	1	1	uncontested	
MacDonnell Regional Council	Rodinga Ward	16 June 23	2	2	uncontested	\$11,017 combined
MacDonnell Regional Council	Luritja Pintubi Ward	16 June 23	1	2	32.2%	

\*Turnout is based on the number of votes counted by enrolment.

## Fee-for-service elections

Fee-for-service elections are conducted for government, non-government and community agencies and organisations that require decisions to be made by ballot. This includes enterprise agreements, the election of office holders and plebiscites.

These elections are charged at commercial rates, i.e. direct costs plus a 35% management fee. The management fee is not charged when conducting elections for NT Government agencies (nor is GST).

Tables 9 and 10 provide details of the fee-for service elections conducted in the reporting year.

**Table 9: Fee-for-service elections 2022-23 (not including enterprise agreement ballots)**

Organisation	Ballot	Date
Northern Land Council	Election of Chair and Deputy Chair	6 December 22
Danila Dilba	Board of Directors election	7 December 22
Central Land Council	Election of Chair, Deputy Chair, AAPA member (1), NTAIC Grants Committee members (2)	21 February 23
NT Aboriginal Investment Corporation	Election of Chair	15 March 23
Tiwi Land Council	Election of Trustee nominees for 8 clans	22-29 June 23

**Total revenue received from fee-for service elections: \$24,996**

**Table 10: Enterprise agreement ballots conducted 2022-23**

Enterprise Agreement for	Date
NTPS Non-contract Principals, Teachers and Assistant Teachers 2021-2024 (second ballot)	23 September 22
NTPS Non-contract Principals, Teachers and Assistant Teachers 2021-2024 (third ballot)	12 December 22
NTPS Correctional Officers 2021-2025	28 March 23
NTPS Aboriginal Health Practitioners 2022-2026	27 April 23
Power and Water Corporation 2021-2026	30 May 23
NTPS Medical Officers 2022-2025	14 June 23
NTPS Dental Officers 2022-2026	28 June 23
NTPS Nurses and Midwives 2022-2026	30 June 23

**Total revenue received from enterprise agreement ballots: \$18,570**

## Assistance for inter-jurisdiction elections

The NTEC provides voting services, on request, for interstate and New Zealand electors visiting the NT for elections they are missing in their home jurisdictions.

Table 11: Early voting services provided for inter-jurisdictional elections during 2022-23

Jurisdiction	Election date	Election type
Victoria	26 November 2022	General election
Western Australia	17 September 2022	Legislative Assembly by-election
New South Wales	25 March 2023	General election
Tasmania	6 May 2023	Legislative Council periodic elections

## Financial disclosure and compliance reviews

With the local government donations disclosure requirements coming into effect from 1 July 2022, all Legislative Assembly (2) and local government (15) by-elections conducted in the 2022-23 reporting year were subject to financial disclosure requirements.

### Financial disclosure for Legislative Assembly elections

For the Fannie Bay by-election, all the required gift and expenditure returns were received from all candidates (6), parties (3), associated entities (2), and registered third party campaigner (1). Almost all of the gift returns from the candidates and political parties were received after the due date and required multiple reminders from the NTEC. The 3 independent candidates in particular needed support in submitting their returns. Submitted returns can be found on the NTEC website.

For the Arafura by-election, all the required gift returns were received from all candidates (3), parties (3), and associated entities (2) (there were no registered third party campaigners), and all 3 political parties with candidates in the election submitted their electoral expenditure returns. Almost all returns were received by the due date or within one week of the date. There were no independent candidates for this by-election. The submitted returns can be found on the NTEC website.

### Compliance reviews for Legislative Assembly elections

An external compliance review was conducted for the Fannie Bay by-election. The report found a high level of compliance with the legislated provisions however there were significant delays in getting the requested information from some parties. The report also concluded that ongoing education and support from the NTEC to electoral participants, especially independent candidates, is still required. The report can be found on the NTEC website.

There was no compliance review conducted for the Arafura by-election.

### Annual returns for Legislative Assembly election participants

Candidates, political parties and associated entities are required to submit an annual return detailing the total amount of gifts they have received throughout the financial year which is due 30 days after the end of that financial year.

Political parties and associated entities must also submit a second annual return detailing the financial amounts received and paid over the duration of the financial year and any outstanding debts incurred (due 60 days after the end of the financial year).

Donors are required to submit an annual return for any donations made to candidates and political parties throughout the financial year.

The annual returns – gifts for the 2021-22 financial year were due on 30 August 2022 and those submitted can be found on the NTEC website.

The annual returns for the 2021-22 financial year were due 29 September 2022 those submitted and can be found on the NTEC website.

Many of the required annual returns are submitted after the due date, or not at all.

## Donations disclosure for local government elections

The disclosure scheme for local government elections only requires returns from candidates if they receive a donation of \$200 or more, or a loan of \$1,500 or more, for campaign purposes. Unlike Legislative Assembly financial disclosure requirements, nil returns are not required, election expenditure returns are not required, and only candidates are required to make a return.

No donation disclosure returns were received for the 15 local government by-elections that were conducted in 2022-23.

## Party registration

At 30 June 2023, there were 6 political parties registered in the NT. During the reporting period, one political party, Territory Alliance, submitted an application to de-register. The public notice for this cancellation of registration was published on 15 November 2022.

There were no other changes to political party registration during the 2022-23 reporting year.

**Table 12: Registered political parties as at 30 June 2023**

Political party	Date of registration
Animal Justice Party	11 March 2020
Australian Labor Party NT Branch	18 April 2005
Country Liberal Party of the NT*	30 March 2005
Federation Party NT**	27 February 2019
NT Greens	23 March 2005
Shooters and Fishers Party	27 February 2015

\* Formerly NT Country Liberal Party

\*\*Formerly Australian Country Party

# Public awareness

To empower the community by ensuring they are well-informed about their electoral rights, responsibilities, the electoral processes, and the array of services the NTEC offer.



16,289 views of the NTEC website



32.6% of website views were made via a mobile



210 social media posts across Facebook, Instagram and LinkedIn



45 media releases



111 school education sessions and 11 school elections



4 Democracy Dash events

## Website

The NTEC website remains the primary gateway to connect with the NTEC for a majority of Territorians. Visitors rely on the website to access vital information about upcoming election events, conduct enrolment transactions, and gain insights into the NTEC's various programs and initiatives.

In 2022-23, there were a total of 16,289 views of the NTEC website, and 32.6% of these visits were made via a mobile device.

In June 2023, a redeveloped website was launched which was a pivotal milestone in the NTEC's commitment to engage and educate Territorians about their electoral rights. This endeavour was undertaken to ensure that the NTEC website not only meets but exceeds the evolving needs and expectations of its users.

The redevelopment project focused on usability, mobile optimisation, enriched content and accessibility.

## Social media

The NTEC's social media channels continue to be a key medium for community outreach, education and engagement, as well as publicising information about electoral events such as local government by-elections.

Short videos were developed in English and common Aboriginal languages to target communities required to engage due to a by-election within their electorate.

Over the course of the year, the NTEC published 210 social media posts across Facebook, Instagram and LinkedIn.

## Elector direct communications

The NTEC's notification service, was successfully used to send key election reminders to enrolled electors Territorians by SMS, email or both for all by-elections.

SMS and emails will continue to be deployed as a direction means of communication at all future elections to raise awareness and increase participation.

## Media services

The NTEC maintains an open and informative relationship with Territorian media outlets.

Throughout 2022–23, the NTEC provided media outlets with media releases for all Legislative Assembly and local government by-elections. The NTEC distributed a total of 45 media releases throughout 2022–23.

In addition, the NTEC commits to providing transparent and timely responses to all media queries within a business day.

## Event displays

The NTEC provided information stalls at the following events:

- No One Left Behind expo
- Youth Conference
- Defence expos at Darwin and Katherine
- COTA expo at Alice Springs

## Communication evaluation

The NTEC conducted a survey with non-voters in Alice Springs aimed at gaining insights into how electors discover information about elections. By actively listening to the community's feedback the NTEC introduced a trial involving the use of 'vote now' corflutes in Katherine.

## School and community visits

The NTEC has a full suite of school education programs that directly link to the Australian Curriculum for Civics and Citizenship for the following year levels:

- Years 3 and 4
- Years 5 and 6
- Year 7
- Years 8 and 9
- Stage 1 and 2 Legal Studies (Years 10 – 12).

There is also a generalised 'future voters' program tailored to students in Years 10, 11 and 12, as well as programs specifically designed for Aboriginal students in remote schools where English is not their first language. All the education programs are offered face-to-face or teachers can access a range of resources on the NTEC website to run these programs themselves.

The NTEC also conducts student leader or house captain elections (or similar) for schools on request, or provides voting materials such as ballot boxes and voting screens for schools to run their own elections.

Education programs are also available for adults and community groups, and there is a customised program for adults for whom English is a second language.

## Democracy Dash

Democracy Dash is a free education event coordinated by the NTEC for school students in Years 9 -12 to enhance their learning of Civics and Citizenship or Legal Studies, with a particular emphasis on democracy. Its structure is similar to a scavenger hunt where small teams of students 'dash' across the city centre, visiting 10 – 12 organisations whose work contributes to democracy. At each stop students must complete an activity. In the reporting year, there were 2 Democracy Dash events held in Darwin and 2 in Alice Springs with 10 schools participating across the 4 events.

**Table 20: Electoral education sessions 2022-23**

Group	Sessions 2022-23	Participants 2022-23
Darwin/Palmerston/rural area schools	101	2,879
Regional schools	4	99
Remote schools	6	93
Adult groups	4	41
School elections	11	1,356
Democracy Dash	4	276
<b>Total</b>	<b>130</b>	<b>4,744</b>

# Corporate

An operating environment that features continuous improvement, is open and supportive of staff, promotes professional growth, mutual respect and recognition of achievements.



The NTEC had 11.5 FTE staff and employed 90 casual staff



9 permanent staff and 4 staff on short term contracts



The total employee expenses were approximately \$1.892 million, or 46.9% of the total expenditure for the year



The NTEC participated in 3 audits



The NT Electoral Commissioner attended all 3 ECANZ meetings

## Staffing

At 30 June 2023, the NTEC had 9 permanent staff and 4 staff on short term contracts (including 3 part time) which equates to 11.5 FTE staff.

During the 2022-23 year the NTEC also employed 90 casual staff.

Table 13 on page 25 and figure 1 on page 26 show the core staff profiles and organisation structure for the agency. Additional contract and casual staff are recruited for elections, and these are not included in the table.

The commission also has a Digital Systems Officer who was transferred to the Department of Corporate and Digital Development (DCDD) under the 2019 machinery of government changes, but still works full time for the agency. Further digital services in support of elections are also provided by DCDD (see Digital services in this section for details).

DCDD also supports the business management functions of the agency, in particular budgeting and finance, as well as human resource management, payroll, procurement, property and recruitment.

The commission also receives support from the Department of Treasury and Finance for financial matters.

## Staff expenses

In 2022-2023, the total employee expenses were approximately \$1.892 million, or 46.9% of the total expenditure for the year. This includes any casual staff employed for Legislative Assembly by-elections, local government by-elections and other electoral events during the reporting year.

Ongoing employee expenses are met from the annual appropriation with separate arrangements made for staff employed for elections and project work.

## Staff development

During the 2022-23 year, NTEC staff undertook the following professional development training:

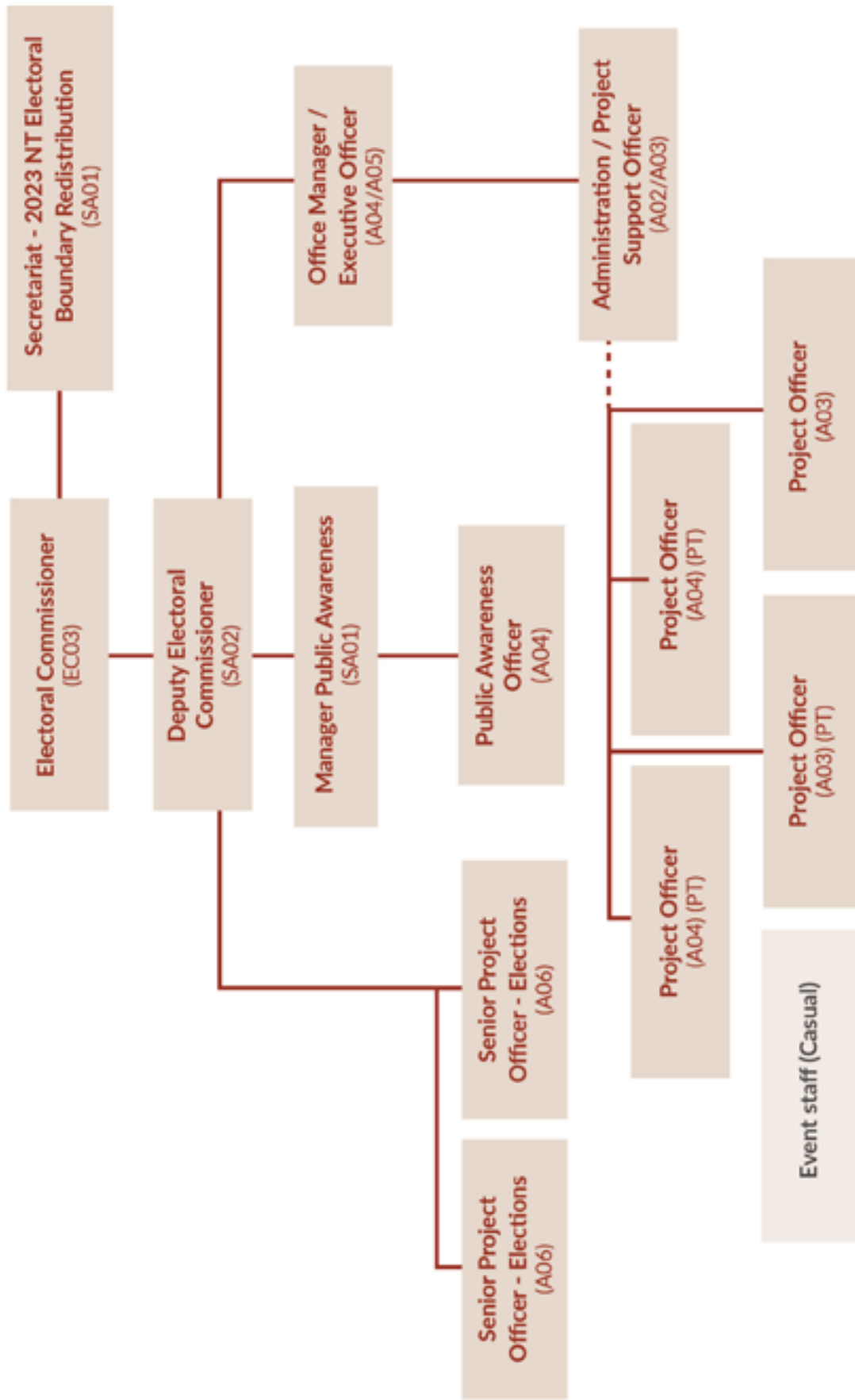
- Remote engagement essentials (IAPP)
- NTG mandatory training modules
- NTG Pay training modules
- NTG WHS training modules
- Fire Warden training
- First Aid training
- Community Legal Education Workshop
- No Woman Left Behind conference

Table 13: Core staff profiles 2019 – 2023 (as at 30 June)

Designation	Number of staff				
	2019	2020	2021	2022	2023
Executive Contract Officer 3	1	1	1	1	1
Senior Administrative Officer 2	1	1	1	1	1
Senior Administrative Officer 1	1	2	1	2	2
Administrative Officer 7	1	1	1	0	0
Administrative Officer 6	4	4	3	3	2
Administrative Officer 5	1	1	0	1	1
Administrative Officer 4	0	4	3	2.5	2
Administrative Officer 3	1	0	0	0	2.5
Administrative Officer 2	0	1	1	1	0
Administrative Officer 1	0	0	0	0	0
<b>Total</b>	<b>9 FTE</b>	<b>10 FTE</b>	<b>15 FTE</b>	<b>11.5 FTE</b>	<b>11.5 FTE</b>



Figure 1: Organisation structure



## Digital services

### TIGER - election management system

The delivery of electoral services is highly reliant on the NTEC's election management system called TIGER which controls the workflow for most electoral event processes. It also maintains data for the functioning of other interdependent systems, including an electronic mark-off system and the agency's website. The TIGER system is built in Microsoft Access, which is no longer suitable for enterprise business systems with well-known issues particularly in the areas of performance, security and scalability. As such, the NTEC's election management system has reached the end of its useable working life.

During the 2021-2022 financial year the NTEC began a 3 phase plan leading to a replacement system. These phases included the tender and contract of support and remediation services for TIGER for a 36 month period while working toward a replacement system. It also included the development of a business case documenting the needs of the replacement system, and a request for information process (issued in May 2022) to scope and cost options.

During 2022-23, a revised business case was developed which analysed the market response to the request for information and identified a preferred way forward with revised costings and implementation timeframe. A budget cabinet submission for a replacement system was submitted in February 2023, and the project was identified as a priority focus on the Digital Government Roadmap 2022-2027. However, funding for the replacement system was not supported in the 2023-24 budget.

The NTEC's election management system remains a significant risk to the agency and the NTG due to the critical issues present in the system and its non-compliance with the NTG's ICT architecture and security standards.

DCDD's Enterprise Project Services coordinated and led the development of the business cases as well as the procurement phases.

### eLAPPS - electronic mark-off system

eLAPPS is an electronic elector mark-off system accessed through netbooks at voting centres which are synchronised to a central database and maintained on a secure server by the software provider. As well as the core function of elector mark-off, eLAPPS

also provides daily statistics of elector turnout which are used to develop targeted social media posts throughout voting periods.

During 2022-23, eLAPPS was used for 2 Legislative Assembly by-elections and 4 contested local government by-elections.

### Easy Count - proportional count software

Easy Count software sourced from the AEC is used to conduct proportional counts for local government elections that have multiple vacancies. Preferences from each ballot paper are entered into the electronic count system, and re-entered by a second person for verification purposes.

During 2022-23, Easy Count was used for one contested local government by-election that had 2 vacancies (Barkly Regional Council, Patta Ward by-election).

### netVote – online ballot software

netVote is an online election software application that supports candidate and referendum elections using full and optional preferential, first-past-the-post, and Hare Clark systems.

The NTEC offers netVote for the conduct of enterprise agreement ballots where electors vote yes or no to accept a proposed agreement.

The cost for using this application is charged through a fee-for-service arrangement (as a netVote fee plus additional hosting costs) however, this does not equate to full cost recovery. Passing on the full costs would likely deter agencies from using the software.

During 2022-23, netVote was used for 8 enterprise agreement ballots.

### Support for elections from DCDD

As well as the regular ICT services provided by DCDD, further services and support were provided for the 2 Legislative Assembly by-elections and some local government by-elections by DCDD teams at no cost including:

- Program Management Office – elevated after hours support including an on call desktop engineer for election days
- Web Services - web publishing of results and election day website support

- Architecture and Cybersecurity - heightened awareness and specialist advice
- Technology Services - heightened awareness and priority support
- Agency Business Systems - After hours support for the election management system (TIGER), the elector mark-off system (eLAPPS) and vote count system (Easy Count), as well as vendor management and incident management

## Premises

### Darwin

The NTEC's main office is located in the Darwin CBD and was utilised multiple times during the 2022-23 reporting year as an early voting centre for both Legislative Assembly by-elections, the contested local government by-elections as well as interstate elections. It was also used as a scrutiny centre for all contested by-elections conducted during the year.

The NTEC leases local commercial premises when appropriate for elections and also has a memorandum of understanding with the Department of Education for the lease of school premises as election day voting centres. During local government elections arrangements are made with councils to utilise existing council assets as voting centres which offset the costs of the election.

The Darwin office has a conference room that is available for use by other government agencies for training and workshop purposes, however the room was used for election purposes for the entirety of the 2022-23 reporting year.

The NTEC also leases a storage facility in Darwin to store election equipment and materials.

### Alice Springs

The agency no longer has a permanent office in Alice Springs, but establishes temporary offices for major elections. During the 2022-23 reporting year, the NTEC utilised existing NTG office space in the NT House building for both the Alice Springs Town Council by-election, and the MacDonnell Regional Council, Luritja Pintubi Ward by-election.

The NTEC also leases a storage facility in Alice Springs to store election equipment and materials.

## Audits

The NTEC participated in 3 audits during the reporting year:

- End of year review for 2021-22
- Agency compliance audit
- Value for Territory audit

The audits only identified minor matters.

## National representation – ECANZ

The Electoral Council of Australia and New Zealand (ECANZ) is a consultative council of electoral commissions from the Commonwealth, states and territories, and New Zealand. In 2022-23, the council met 3 times, with the NT Electoral Commissioner attending all meetings virtually.

The matters discussed at these meetings include electoral integrity, online media election protocols, methods to combat dis-information and mis-information at elections, the impact of artificial intelligence, and cyber and data security within systems used by electoral commissions, especially in legacy systems.

An equivalent forum also operates for deputy electoral commissioners, and there are additional working groups and community of practices' that meet regularly and are attended by the relevant staff members from each commission, including the NTEC.

## Freedom of information requests

There were no freedom of information requests to the NTEC during the 2022-23 reporting year.

# Financial statement overview

## NTEC funding arrangements

The NTEC is funded through an annual appropriation from Treasury. The annual appropriation supports salaries for staff as well as enrolment, election, public awareness and corporate governance functions, including the payment of \$0.121 million to the AEC for annual joint roll arrangement costs.

Additional revenue is received through the charging of a 15% corporate overhead for conducting council by-elections and a 35% management fee for fee-for-service elections.

Funding for specific events is undertaken as follows:

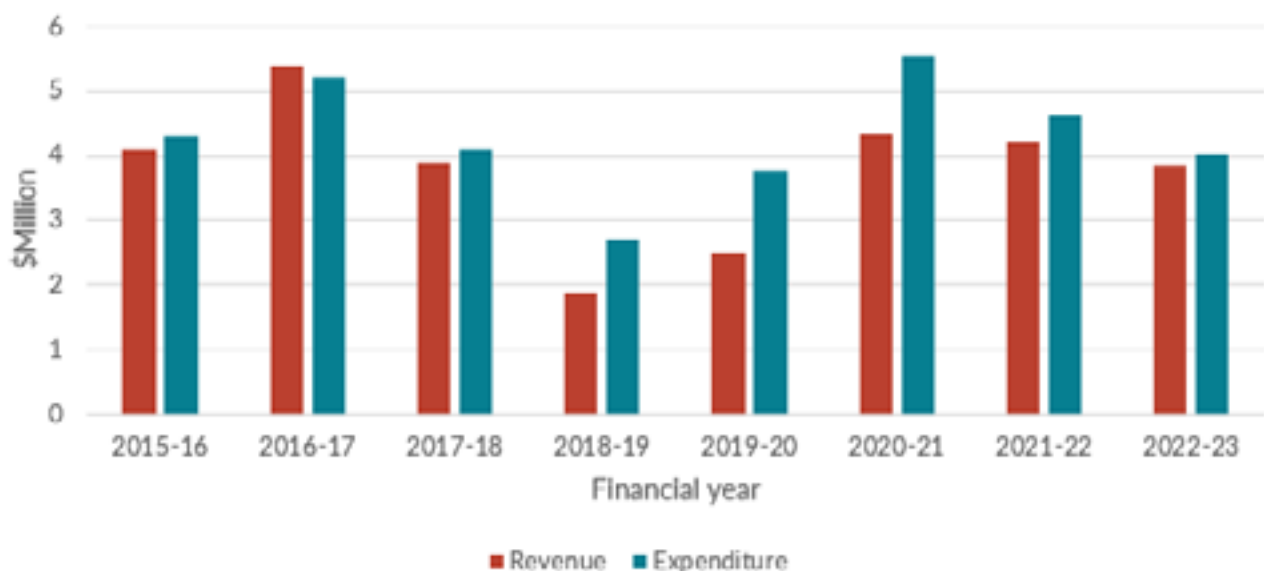
- Legislative Assembly by-elections: from a Treasurer's advance (TA) to recoup by-election expenditure
- Local government by-elections: from charging councils on a marginal cost recovery basis plus a 15% corporate overhead fee
- Legislative Assembly electoral boundary redistribution: from a Treasurer's advance
- Fee-for-service elections: from charging NTEC commercial rates including a 35% management fee
- NTPS enterprise agreement ballots: from charging the relevant government agency on a marginal cost recovery basis.

## Historical revenue and expenditure variations

Graph 1 shows revenue and expenditure fluctuations over the last few financial years. The major costs for each year can be explained as follows:

- 2016-2017 – the conduct of the 2016 Territory Election
- 2017-2018 – the conduct of the 2017 NT Council elections and 2018 City of Palmerston election
- 2018-2019 – conduct of the 2019 NT Electoral Boundary Redistribution
- 2019-2020 – finalisation of the 2019 redistribution and pre-2020 Territory Election expenditure
- 2020-2021 – the conduct of the 2020 Territory Election
- 2021-2022 – the conduct of the 2021 Local Government Elections and the Daly by-election
- 2022-23 – the conduct of the Fannie Bay and Arafura by-elections, and the 2023 NT Electoral Boundary Redistribution.

Graph 1: NTEC revenue versus expenditure – financial years 2016-17 to 2022-23



## 2022 - 2023 outcomes

The NTEC's revenue for 2022-2023 was \$3.850 million, which included \$0.472 million for the Fannie Bay and Arafura by-elections and 2023 NT Electoral Boundary Redistribution (through a TA), \$0.352 million paid by councils for by-elections and \$0.045 million from the conduct of fee-for-service elections.

Total actual expenditure (including depreciation and amortisation) for the 2022-2023 financial year amounted to \$4.039 million. Included in this was \$1.892 million in staff costs, \$0.830 million for purchases of goods and services and \$1.245 million for goods and services received free of charge (the latter funded through DCDD). The agency recorded a \$0.189 million deficit.

## Revenue from local government by-elections and fee-for-service elections

Section 136(7) of the *Local Government Act 2019* allows councils to conduct their own by-elections if a vacancy becomes available, or appoint an alternative provider. To date all by-elections for local government councils in the NT have been conducted by the NTEC.

During the reporting year, the NTEC conducted 15 local government by-elections which generated \$0.352 million in revenue (see Table 14).

Fee-for-service elections are conducted for government, non-government and community agencies. This includes enterprise agreement ballots and the election of office holders.

During the reporting year, the NTEC conducted 13 fee-for-service elections which generated \$0.045 million in revenue (see Table 15).

**Table 14: Revenue from NT local government by-elections conducted 2022-2023**

Election day	Council by-election	Invoiced amount (incl. GST)
8 July 22	Roper Gulf Regional Council, Numbulwar Numburindi Ward	\$1,082
10 August 22	East Arnhem Regional Council, Gumurr Miyarrka Ward	\$1,150
10 August 22	East Arnhem Regional Council, Anindilyakwa Ward	\$1,150
27 August 22	City of Darwin, Waters Ward	\$101,482
17 September 22	Wagait Shire Council	\$8,533
29 October 22	Alice Springs Town Council	\$139,481
24 November 22	Central Desert Regional Council, Anmatjere Ward (failed)	\$974
18 March 23	West Arnhem Regional Council, Gunbalanya Ward	\$2,365
5 May 23	East Arnhem Regional Council, Gumurr Miwatj Ward	\$23,039
6 May 23	Barkly Regional Council, Alywarr and Patta wards	\$60,757
16 June 23	Central Desert Regional Council, Anmatjere Ward (supplementary) and Southern Tanami Ward	\$974
16 June 23	MacDonnell Regional Council, Rodinga and Luritja Pintubi wards	\$11,017
<b>TOTAL</b>		<b>\$352,004</b>

**Table 15: Revenue from fee-for-service elections conducted 2022-2023**

Date	Fee-for-service election	Invoiced amount
23 September 22	NTPS Non-contract Principals, Teachers and Assistant Teachers – EA ballot	\$2,350
6 December 22	Northern Land Council – election of office holders	\$4,045
7 December 22	Danila Dilba – election of office holders	\$957
12 December 22	NTPS Non-contract Principals, Teachers and Assistant Teachers – EA ballot	\$2,350
21 February 23	Central Land Council – election of office holders	\$10,045
15 March 23	NT Aboriginal Investment Corporation – election of Chair	\$445
28 March 23	NTPS Correctional Officers – EA ballot	\$2,350
27 April 23	NTPS Aboriginal Health Practitioners – EA ballot	\$1,300
30 May 23	Power and Water Corporation – EA ballot	\$1,870
14 June 23	NTPS Medical Officers – EA ballot	\$2,350
28 June 23	NTPS Dental Officers – EA ballot	\$1,300
29 June 23	Tiwi Land Council – Election of Trustee nominees	\$9,504
30 June 23	NTPS Nurses and Midwives – EA ballot	\$4,700
	<b>TOTAL</b>	<b>\$44,566</b>



# Financial statement overview

The NTEC provides an independent service to the people of the Northern Territory, the Northern Territory Legislative Assembly, municipal and regional councils and other organisations.

Key responsibilities include:

- Managing parliamentary and non-parliamentary elections including local government and fee-for-service elections
- Contributing to the maintenance of the Northern Territory electoral roll
- Delivering public electoral awareness and education programs
- Providing advice and reports relating to electoral matters to the Legislative Assembly
- Conducting electoral research
- Providing secretariat support to the (Legislative Assembly) Redistribution Committee and Local Government Representation Review Committee.

## Financial Performance

NTEC's financial performance in 2022-23 has been compared with the final budget for 2022-23 as set out in the table below:

### 2022-23 Actual financial performance and 2022-23 final approved budget

	Actual performance 2023 \$000	Final budget 2023 \$000	Variance \$000
Income	3 850	4 083	(233)
Expenses	4 039	4 110	71
Net surplus/ (deficit)	(189)	(27)	(162)

In the 2022-23 financial year, NTEC conducted 15 local government by-elections that generated an income of \$0.31 million. Adjustments were made to the commission's original budget to reflect income for two Legislative Assembly by-elections and the 2023 NT Electoral Boundary Redistribution.

A Treasurer's Advance totalling \$0.5 million was granted in June 2023 for the following activities in the financial year:

- 2022 Fannie Bay by-election
- 2023 Arafura by-election
- 2023 NT Electoral Boundary Redistribution

Variance on actual and budgeted income is primarily due to the overcharge on DCDD corporate ICT Services (goods and services free of charge). Since these are notional charges, these do not have an effect on the comprehensive result for the commission. While there is an equivalent underspend for goods and services free of charge, this was offset by the overspend in employee expenses to support the Legislative Assembly and local government by-elections.

NTEC's financial performance for 2022-23 reflects a deficit of \$0.2 million which is an improvement compared to the deficit reported in the prior financial year.

## Certification of the financial statements

We certify that the attached financial statements for the NT Electoral Commission have been prepared based on proper accounts and records in accordance with Australian Accounting Standards and with the requirements as prescribed in the Financial Management Act 1995 and Treasurer's Directions.

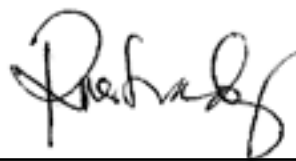
We further state that the information set out in the comprehensive operating statement, balance sheet, statement of changes in equity, cash flow statement, and notes to and forming part of the financial statements, presents fairly the financial performance and cash flows for the year ended 30 June 2023 and the financial position on that date.

At the time of signing, we are not aware of any circumstances that would render the particulars included in the financial statements misleading or inaccurate.



---

Iain Loganathan  
Electoral Commissioner  
30 August 2023



---

Rina Estandarte  
Business Manager  
30 August 2023

## Comprehensive operating statement

For the year ended 30 June 2023

	Note	2023 \$000	2022 \$000
<b>INCOME</b>			
Grants and subsidies revenue			
Current	4	-	1
Appropriation			
Output	5	2 061	1 845
Sales of goods and services	6	419	1 521
Goods and services received free of charge	7	1 245	775
Other income	9	125	54
<b>TOTAL INCOME</b>		<b>3 850</b>	<b>4 196</b>
<b>EXPENSES</b>			
Employee expenses		1 892	2 673
Administrative expenses			
Property management		44	67
Purchases of goods and services	10	830	1 003
Repairs and maintenance		-	-
Depreciation and amortisation	18,20	28	109
Other administrative expenses <sup>1</sup>		1 245	775
Interest expenses		-	-
<b>TOTAL EXPENSES</b>		<b>4 039</b>	<b>4 627</b>
<b>NET SURPLUS/(DEFICIT)</b>		<b>(189)</b>	<b>(431)</b>
<b>COMPREHENSIVE RESULT</b>		<b>(189)</b>	<b>(431)</b>

<sup>1</sup> Includes DCDD service charges and DIPL repairs and maintenance service charges.

*The comprehensive operating statement is to be read in conjunction with the notes to the financial statements.*

## Balance sheet

As at 30 June 2023

	Note	2023 \$000	2022 \$000
<b>ASSETS</b>			
<b>Current assets</b>			
Cash and deposits	13	653	358
Receivables	15	97	37
<b>Total current assets</b>		<b>750</b>	<b>395</b>
<b>Non-current assets</b>			
Property, plant and equipment	18	-	2
Intangibles	20	63	89
<b>Total non-current assets</b>		<b>63</b>	<b>91</b>
<b>TOTAL ASSETS</b>		<b>813</b>	<b>486</b>
<b>LIABILITIES</b>			
<b>Current liabilities</b>			
Payables	23	166	54
Borrowings and advances – <i>lease liabilities</i>		-	-
Provisions	24	239	216
<b>Total current liabilities</b>		<b>405</b>	<b>270</b>
<b>TOTAL LIABILITIES</b>		<b>405</b>	<b>270</b>
<b>NET ASSETS</b>		<b>408</b>	<b>216</b>
<b>EQUITY</b>			
Capital		3 102	2 721
Accumulated funds		(2 694)	(2 505)
<b>TOTAL EQUITY</b>		<b>408</b>	<b>216</b>

*The balance sheet is to be read in conjunction with the notes to the financial statements.*

## Statement of changes in equity

For the year ended 30 June 2023

	Note	Equity at 1 July	Comprehensive result	Transactions with owners in their capacity as owners	Equity at 30 June
		\$000	\$000	\$000	\$000
<b>2022-23</b>					
<b>Accumulated funds</b>		(2 558)	(189)	-	(2 747)
Transfers from reserves		53	-	-	53
		(2 505)	(189)	-	(2 694)
<b>&lt;Reserves&gt;</b>	27	-	-	-	-
<b>Capital – transactions with owners</b>					
Equity injections					
Capital appropriation		17	-	-	17
Equity transfers in		1 257	-	-	1 257
Other equity injections		1 745	-	380	2 125
Equity withdrawals					
Capital withdrawal		(298)	-	-	(298)
Equity transfers out		-	-	-	-
		2 721	-	380	3 101
<b>Total equity at end of financial year</b>		<b>216</b>	<b>(189)</b>	<b>380</b>	<b>(407)</b>
<b>2021-22</b>					
<b>Accumulated funds</b>		(2 127)	(431)	-	(2 558)
Transfers from reserves		53	-	-	53
		(2 074)	(431)	-	(2 505)
<b>&lt;Reserves&gt;</b>	27	-	-	-	-
<b>Capital – transactions with owners</b>					
Equity injections					
Capital appropriation		17	-	-	17
Equity transfers in		1 257	-	-	1 257
Other equity injections		1 745	-	-	1 745
Equity withdrawals					
Capital withdrawal		(298)	-	-	(298)
Equity transfers out		-	-	-	-
		2721	-	-	2 721
<b>Total equity at end of financial year</b>		<b>647</b>	<b>(431)</b>	<b>-</b>	<b>216</b>

The statement of changes in equity is to be read in conjunction with the notes to the financial statements.

## Cash flow statement

For the year ended 30 June 2023

	Note	2023 \$000	2022 \$000
<b>CASH FLOWS FROM OPERATING ACTIVITIES</b>			
<b>Operating receipts</b>			
Grants and subsidies received			
Current		-	1
Appropriation			
Output		2 061	1 845
Receipts from sales of goods and services		547	2 031
Interest received		-	-
<b>Total operating receipts</b>		<b>2 608</b>	<b>3 877</b>
<b>Operating payments</b>			
Payments to employees		(1 864)	(2 655)
Payments for goods and services		(829)	(1 263)
Grants and subsidies paid		-	-
Interest paid		-	-
<b>Total operating payments</b>		<b>(2 693)</b>	<b>(3 918)</b>
<b>Net cash from/(used in) operating activities</b>	14	<b>(85)</b>	<b>(41)</b>
<b>CASH FLOWS FROM FINANCING ACTIVITIES</b>			
<b>Financing receipts</b>			
Deposits received		-	-
Equity injections		380	-
<b>Total financing receipts</b>		<b>380</b>	<b>-</b>
<b>Financing payments</b>			
Finance lease payments		-	-
<b>Total financing payments</b>		<b>-</b>	<b>-</b>
<b>Net cash from/(used in) financing activities</b>		<b>380</b>	<b>-</b>
Net increase/(decrease) in cash held		295	(41)
Cash at beginning of financial year		358	399
<b>CASH AT END OF FINANCIAL YEAR</b>	13	<b>653</b>	<b>358</b>

*The cash flow statement is to be read in conjunction with the notes to the financial statements.*

## Index of notes to the financial statements

### Notes

1. Objectives and funding
2. Statement of significant accounting policies
3. Comprehensive operating statement by output group
- Income**
4. Grants and subsidies revenue
5. Appropriation
- 5a. Summary of changes to appropriation
6. Sales of goods and services
7. Goods and services received free of charge
8. Gain on disposal of assets
9. Other income
- Expenses**
10. Purchases of goods and services
11. Interest expenses
12. Write-offs, postponements, waivers, gifts and ex gratia Payments
- Assets**
13. Cash and deposits
14. Cash flow reconciliation
15. Receivables
16. Advances and investments
17. Other financial assets
18. Property, plant and equipment
19. NTEC as lessee
20. Intangibles
21. Assets held for sale

### Liabilities

22. Deposits held
23. Payables
24. Provisions
25. Other liabilities
26. Commitments
- Equity**
27. Reserves
- Other disclosures**
28. Fair value measurement
29. Financial instruments
30. Related parties
31. Contingent liabilities and contingent assets
32. Events subsequent to balance date
33. Budgetary information

# NOTES TO FINANCIAL STATEMENTS

## 1. Objectives and funding

The Northern Territory Electoral Commission (the commission, NTEC) was established in March 2004 to support government by providing a fair, impartial and professional electoral service and ensuring there is an opportunity for the people of the Northern Territory to participate in free and democratic elections. The commission is responsible for conducting elections for the Legislative Assembly, local government and other organisations (if appointed), in an efficient and cost-effective manner, consistent with legislative requirements.

The commission is predominantly funded and therefore dependent, on the receipt of parliamentary appropriations. The financial statements encompass all funds through which the commission controls resources to carry on its functions and deliver outputs. For reporting purposes, outputs delivered by the commission are summarised into several output groups. Note 3 provides summarised financial information in the form of a comprehensive operating statement by the output group.

For the conduct of Legislative Assembly elections, a Treasurer's Advance is generally sought at the conclusion of the event. For a local government general election, councils are charged the marginal cost and have the option to pay prior or after the event. For local government by-elections, councils are charged a 15 per cent corporate overhead in addition to the marginal cost and invoiced after the event. The financial statements encompass all funds through which the commission controls resources to carry on its functions and deliver outputs.

## 2. Statement of significant accounting policies

### a) Statement of compliance

The financial statements have been prepared in accordance with the requirements of the *Financial Management Act 1995* and related Treasurer's Directions. The *Financial Management Act 1995* requires the NTEC to prepare financial statements for

the year ended 30 June based on the form determined by the Treasurer. The form of agency financial statements should include:

1. a certification of the financial statements
2. a comprehensive operating statement
3. a balance sheet
4. a statement of changes in equity
5. a cash flow statement and
6. applicable explanatory notes to the financial statements.

### b) Basis of accounting

The financial statements have been prepared using the accrual basis of accounting, which recognises the effect of financial transactions and events when they occur, rather than when cash is paid out or received. As part of the preparation of the financial statements, all intra agency transactions and balances have been eliminated.

Except where stated, the financial statements have also been prepared in accordance with the historical cost convention.

The form of the NTEC's financial statements is also consistent with the requirements of Australian accounting standards. The effects of all relevant new and revised standards and interpretations issued by the Australian Accounting Standards Board (AASB) that are effective for the current annual reporting period have been evaluated.

### Standards and interpretations effective from 2022-23

Several amending standards and AASB interpretations have been issued that apply to the current reporting periods, but are considered to have no or minimal impact on public sector reporting.

### Standards and interpretations issued but not yet effective

No Australian accounting standards have been early adopted for 2022-23.

On the date of authorisation of the financial statements, the following standard was issued but not yet effective. This accounting standard has not been adopted early for 2022-23.

### **AASB 2022-10 Amendments to Australian Accounting Standards – Fair Value Measurement of Non-Financial assets of Not-for-Profit Public Sector Entities**

This standard amends the application of AASB 13 *Fair Value Measurement* to non-financial assets of not-for-profit public sector entities not held primarily to generate cash inflows. It applies prospectively to annual periods beginning on or after 1 January 2024, with earlier application permitted.

This revised standard provides clarification and further guidance on the current requirements for measuring non-financial assets including:

- when an asset's use is considered 'financially feasible'
- application of the cost approach in measurement of an asset's fair value
- costs to be included in the calculation of replacement cost
- indicators of economic obsolescence.

This standard is not expected to have a material impact on the financial statements when first adopted for the year ending 30 June 2025.

Several amending standards and AASB interpretations have been issued that apply to future reporting periods but are considered to have limited impact on public sector reporting.

### **c) Reporting entity**

The financial statements cover the commission as an individual reporting entity. The NTEC is a Northern Territory commission established under the *Interpretation Act 1978* and *Administrative Arrangements Order*.

The principal place of business of the commission is: Level 3, TCG Centre, 80 Mitchell Street, Darwin.

NTEC has no controlled entities.

### **d) NTEC and Territory items**

The financial statements of the NTEC include income, expenses, assets, liabilities and equity over which the NTEC has control (agency items) and is able to utilise to further its own objectives. Certain items, while managed by the NTEC, are administered and recorded by the Territory rather than the NTEC (Territory items). Territory items are recognised and recorded in the Central Holding Authority as discussed below.

### **Central Holding Authority**

The Central Holding Authority is the 'parent body' that represents the government's ownership interest in government-controlled entities.

The Central Holding Authority also records all Territory items, such as income, expenses, assets and liabilities controlled by the government and managed by agencies on behalf of the government. The main Territory item is Territory income, which includes taxation and royalty revenue, Commonwealth general purpose funding (such as GST revenue), fines, and statutory fees and charges.

The Central Holding Authority also holds certain Territory assets not assigned to agencies as well as certain Territory liabilities that are not practical or effective to assign to individual agencies such as unfunded superannuation and long service leave.

The Central Holding Authority recognises and records all Territory items, and as such, these items are not included in NTEC's financial statements.

### **e) Comparatives**

Where necessary, comparative information for the 2021-22 financial year has been reclassified to provide consistency with current year disclosures.

### **f) Presentation and rounding of amounts**

Amounts in the financial statements and notes to the financial statements are presented in Australian dollars and have been rounded to the nearest thousand dollars, with amounts of \$500 or less being rounded down to zero. Figures in the financial statements and notes may not equate due to rounding.

### **g) Changes in accounting policies**

There have been no changes to accounting policies adopted in 2022-23 as a result of management decisions.

### **h) Accounting judgments and estimates**

The preparation of the financial report requires the making of judgments and estimates that affect the recognised amounts of assets, liabilities, revenues and expenses and the disclosure of contingent liabilities. The estimates and associated assumptions are based on historical experience and various other factors that are believed to be reasonable under the circumstances, the results of which form the basis for making judgments about the carrying values of assets and liabilities that are not readily apparent from other sources. Actual results may differ from these estimates.

The estimates and underlying assumptions are reviewed on an ongoing basis. Revisions to accounting estimates are recognised in the period in which the estimate is revised if the revision affects only that period, or in the period of the revision and future periods if the revision affects both current and future periods.

Judgments and estimates that have significant effects on the financial statements are disclosed in the relevant notes to the financial statements.

#### i) Goods and services tax

Income, expenses and assets are recognised net of the amount of goods and services tax (GST), except where the amount of GST incurred on a purchase of goods and services is not recoverable from the Australian Tax Office (ATO). In these circumstances the GST is recognised as part of the cost of acquisition of the asset or as part of the expense.

Receivables and payables are stated with the amount of GST included. The net amount of GST recoverable from, or payable to, the ATO is included as part of receivables or payables in the balance sheet.

Cash flows are included in the cash flow statement on a gross basis. The GST components of cash flows arising from investing and financing activities, which are recoverable from, or payable to, the ATO are classified as operating cash flows. Commitments and contingencies are disclosed net of the amount of GST recoverable or payable unless otherwise specified. Gross GST recoverable on commitments is disclosed separately in the commitments note.

#### j) Contributions by and distributions to government

The NTEC may receive contributions from government where the government is acting as owner of the NTEC. Conversely, the NTEC may make distributions to government. In accordance with the *Financial Management Act 1995* and Treasurer's Directions, certain types of contributions and distributions, including those relating to administrative restructures, have been designated as contributions by, and distributions to, government. These designated contributions and distributions are treated by the agency as adjustments to equity.

The statement of changes in equity provides additional information in relation to contributions by, and distributions to, government.

### 3. Comprehensive operating statement by output group

	Note	Electoral Services		Corporate and Governance		Total	
		2023 \$000	2022 \$000	2023 \$000	2022 \$000	2023 \$000	2022 \$000
<b>INCOME</b>							
Grants and subsidies revenue							
Current	4	-	1	-	-	-	1
Appropriation							
Output	5	2 061	1 845	-	-	2 061	1 845
Sales of goods and services	6	419	1 521	-	-	419	1 521
Interest revenue		-	-	-	-	-	-
Goods and services received free of charge	7	-	-	1 245	775	1 245	775
Other income	9	125	54	-	-	125	54
<b>TOTAL INCOME</b>		<b>2 606</b>	<b>3 421</b>	<b>1 245</b>	<b>775</b>	<b>3 850</b>	<b>4 196</b>
<b>EXPENSES</b>							
Employee expenses		1 729	2 540	163	133	1 892	2 673
Administrative expenses							
Property management		44	67	-	-	44	67
Purchases of goods and services	10	814	983	16	20	830	1 003
Repairs and maintenance		-	-	-	-	-	-
Depreciation and amortisation	18,20	28	109	-	-	28	109
Other administrative expenses <sup>1</sup>		-	-	1 245	775	1 245	775
Interest expenses		-	-	-	-	-	-
<b>TOTAL EXPENSES</b>		<b>2 615</b>	<b>3 699</b>	<b>1 424</b>	<b>928</b>	<b>4 039</b>	<b>4 627</b>
<b>NET SURPLUS/(DEFICIT)</b>		<b>(9)</b>	<b>(278)</b>	<b>(179)</b>	<b>(153)</b>	<b>(189)</b>	<b>(431)</b>
<b>OTHER COMPREHENSIVE INCOME</b>							
<b>COMPREHENSIVE RESULT</b>		<b>(9)</b>	<b>(278)</b>	<b>(179)</b>	<b>(153)</b>	<b>(189)</b>	<b>(431)</b>

<sup>1</sup> Includes DCDD service charges and DIPL R&M.

*This comprehensive operating statement by output group is to be read in conjunction with the notes to the financial statements.*

The NT Electoral Commission is predominantly funded by parliamentary appropriations for the provision of outputs. Outputs are the services provided or goods produced by an agency for users external to the agency. They support the delivery of the agency's objectives and or statutory responsibilities. The above table disaggregates revenue and expenses that enable delivery of services by output group which form part of the balances of the commission.

#### Income

Income encompasses both revenue and gains.

Income is recognised at the fair value of the consideration received, exclusive of the amount of GST. Exchanges of goods or services of the same nature and value without any cash consideration being exchanged are not recognised as income.

## 4. Grants and subsidies revenue

	2023			2022		
	\$000	\$000	\$000	\$000	\$000	\$000
	Revenue from contracts with customers	Other	Total	Revenue from contracts with customers	Other	Total
Current grants	-	-	-	-	1	1
<b>Total grants and subsidies revenue</b>	<b>-</b>	<b>-</b>	<b>-</b>	<b>-</b>	<b>1</b>	<b>1</b>

Grants revenue is recognised at fair value exclusive of the amount of GST.

Grant revenue, passed on from a Territory Government-controlled entity with the exception of the Central Holding Authority, is recognised upfront on receipt, irrespective of which revenue accounting standard it may fall under in accordance with the Treasurer's Direction on income.

There is no grant revenue recognised for 2022-23 financial year. Grant revenue for 2021-22 financial year relates to the Democracy Dash event in June 2022.

## 5. Appropriation

Appropriation recorded in the operating statement includes output appropriation and commonwealth appropriation received for the delivery of services.

NTEC did not receive commonwealth appropriation for 2022-23 and 2021-22 financial years.

	2023			2022		
	\$000	\$000	\$000	\$000	\$000	\$000
	Revenue from contracts with customers	Other	Total	Revenue from contracts with customers	Other	Total
Output	-	2 061	2 061	-	1 845	1 845
<b>Total appropriation in the operating statement</b>	<b>-</b>	<b>2 061</b>	<b>2 061</b>	<b>-</b>	<b>1 845</b>	<b>1 845</b>

Appropriation recorded in the cashflow statement includes capital appropriation and commonwealth capital appropriation received for the delivery of assets to be retained by the agency.

The NTEC did not receive capital appropriation and commonwealth capital appropriation for 2022-23 and 2021-22 financial years.

Output appropriation is the operating payment to each agency for the outputs they provide as specified in the *Appropriation Act*. It does not include any allowance for major non-cash costs such as depreciation. Output appropriations do not have sufficiently specific performance obligations and recognised on receipt of funds.

Where appropriation received has an enforceable contract with sufficiently specific performance obligations as defined in AASB 15, revenue is recognised as and when goods and or services are transferred to the customer or third party beneficiary. Otherwise, revenue is recognised when the agency gains control of the funds. The NTEC, through output appropriation, provides election management services to the people of the Northern Territory.

## a) Summary of changes to budget appropriations

The following table presents changes to budgeted appropriations authorised during the current financial year together with explanations for significant changes. It compares the amounts originally identified in the *Appropriation (2022-2023) Act 2022* with revised appropriations as reported in *2023-24 Budget Paper No. 3 Agency Budget Statements* and the final end of year appropriation.

The changes within this table relates only to appropriation and do not include agency revenue (for example, goods and services revenue and grants received directly by the agency) or expenditure. Refer to *Note 33 Budgetary information* for detailed information on variations to the agency's actual outcome compared to budget for revenue and expenses.

	Original 2022-23 budget appropriation (a)	Revised 2022-23 budget appropriation (b)	Change to budget appropriation (c) (b-a)	Note (f)	Final 2022-23 budget appropriation (e)	Change to budget appropriation (g) (d-b)	Note (h)
	\$000	\$000	\$000		\$000	\$000	
<b>Output</b>	1 596	1 596	-		2 061	465	1
<b>Total appropriation</b>	<b>1 596</b>	<b>1 596</b>	<b>-</b>		<b>2 061</b>	<b>465</b>	

<sup>1</sup> Approved Treasurer's advance to recover costs for Fannie Bay by-election, Arafura by-election and 2023 NT Electoral Boundary Redistribution.

Output and capital appropriations reflect funding as a direct result of government-approved decisions, with actual funding received by the Department of Treasury and Finance in line with the budgeted amounts.

## 6. Sales of goods and services

	2023			2022		
	\$000 Revenue from contracts with customers	\$000 Other	\$000 Total	\$000 Revenue from contracts with customers	\$000 Other	\$000 Total
NT LG elections	-	-	-	1 445	-	1 445
NT LG by-elections	310	-	310	-	-	-
Accrued revenue – conduct of elections	-	-	-	28	-	28
Non-voter fines	66	-	66	-	-	-
Election services - other	43	-	43	48	-	48
<b>Total sales of goods and services</b>	<b>419</b>	<b>-</b>	<b>419</b>	<b>1 521</b>	<b>-</b>	<b>1 521</b>

## Rendering of services

The NTEC's sales of goods and services income primarily relate to the provision of election services to various clients. Revenue from rendering of services is recognised as the NTEC satisfies its performance obligation when election services are performed, with payments typically due a month after.

Revenue from these sales are based on the price specified in the contract, and revenue is only recognised to the extent that it is highly probable a significant reversal will not occur. There is no element of financing present as sales are made with a short credit term.

In 2022-23, sales of goods and services for the commission primarily relate to income for conducting NT local government by-elections. Other sources of income were non-voter fines and other elections (mostly enterprise bargaining agreement related election services for 2022-23 financial year).

Revenue from contracts with customers have been disaggregated below into categories to enable users of these financial statements to understand the nature, amount, timing and uncertainty of income and cash flows. These categories include a description of the type of product or service line, type of customer and timing of transfer of goods and services.

	2023	2022
	\$000	\$000
<b>Type of good and service:</b>		
Service delivery	419	1 521
<b>Total revenue from contracts with customers by good or service</b>	<b>419</b>	<b>1 521</b>
<b>Type of customer:</b>		
Australian Government entities	2	1
State and Territory governments	349	1 515
Non-government entities	68	5
<b>Total revenue from contracts with customers by type of customer</b>	<b>419</b>	<b>1 521</b>
<b>Timing of transfer of goods and services:</b>		
Overtime	-	-
Point in time	419	1 521
<b>Total revenue from contracts with customers by timing of transfer</b>	<b>419</b>	<b>1 521</b>

## 7. Goods and services received free of charge

	2023	2022
	\$000	\$000
Corporate and information services	1 244	774
Repairs and maintenance	1	1
	<b>1 245</b>	<b>775</b>

Resources received free of charge are recognised as revenue when, and only when, a fair value can be reliably determined and the services would have been purchased if they had not been donated. Use of those resources is recognised as an expense. Resources received free of charge are recorded as either revenue or gains depending on their nature.

Repairs and maintenance expenses incurred on the NTEC's assets and costs associated with administration of these expenses are centralised and in the Department of Infrastructure, Planning and Logistics on behalf of the NTEC, and form part of goods and services received free of charge by the commission.

In addition, the following corporate services staff and functions are centralised and provided by Department of Corporate and Digital Development on behalf of the agency and form part of goods and services received free of charge by the agency:

- financial services including accounts receivable, accounts payable and payroll
- employment and workforce services
- information management services
- procurement services
- property leasing services.

## 8. Gain on disposal of assets

The NTEC has no gain on disposal of assets in 2022-23 and in 2021-22.

## 9. Other income

	2023			2022		
	\$000 Revenue from contracts with customers	\$000 Other	\$000 Total	\$000 Revenue from contracts with customers	\$000 Other	\$000 Total
Miscellaneous revenue	-	125	125	-	54	54
<b>Total other income</b>	<b>-</b>	<b>125</b>	<b>125</b>	<b>-</b>	<b>54</b>	<b>54</b>

### Miscellaneous revenue

Miscellaneous revenue includes reimbursements from other NTG agencies and external parties. Where funding is received for agreements that are enforceable and contain sufficiently specific performance obligations for the agency to transfer goods or services to the grantor or third-party beneficiary, the transaction is accounted for under AASB 15 as revenue from contracts with customers. Where this criteria is not met, revenue is generally accounted for under AASB 1058 and income is generally recognised upfront on receipt of funding.

The NTEC's other income in 2022-23 comprise of:

- recovery of the 2022 Local Government Representation Reviews costs from the Department of Chief Minister and Cabinet
- recovery of the NTEC website redevelopment costs from the Department of Corporate and Digital Development.

## 10. Purchases of goods and services

	2023	2022
	\$000	\$000
The net surplus/(deficit) has been arrived at after charging the following expenses:		
<b>Goods and services expenses:</b>		
Consultants <sup>1</sup>	23	60
Advertising <sup>2</sup>	7	-
Marketing and promotion <sup>3</sup>	58	154
Document production	59	89
Legal Expenses	-	-
Agent service arrangements	175	130
Training and study	3	3
Official duty fares	95	79
Accommodation	32	56
Travelling allowance	20	36
Audit fees	27	-
Motor vehicle expenses	10	59
Information technology charges and communications	99	182
Information technology hardware and software	54	58
Air, bus and boat charter	78	38
Other <sup>4</sup>	90	59
	<b>830</b>	<b>1 003</b>

<sup>1</sup> Includes marketing, promotion and IT consultants.

<sup>2</sup> Does not include recruitment, advertising or marketing and promotion advertising.

<sup>3</sup> Includes advertising for marketing and promotion but excludes marketing and promotion consultants' expenses, which are incorporated in the consultants' category.

<sup>4</sup> Prior year purchases category 'other' further disaggregated to complete comparative data for the current year.

Purchases of goods and services generally represent the day-to-day running costs incurred in normal operations, including supplies and service costs recognised in the reporting period in which they are incurred.

## 11. Interest expense

The NTEC did not incur interest expense in 2022-23 and 2021-22.

## 12. Write-offs, postponements, waiver, gifts and ex gratia payments

The NTEC had no write-offs, postponements, waivers, and gifts or ex gratia payments for the year ended 30 June 2023.

### Write-off

Write-offs reflect the removal from accounting records the value of public money or public property owing to, or loss sustained by the Territory or agency. It refers to circumstance where the Territory or an agency has made all attempts to pursue the debt, however, is deemed irrecoverable due to reasons beyond the Territory or an agency's control. Write-offs result in no cash outlay and are accounted for under 'Other administrative expenses' in the Comprehensive Operating Statement.

## Waiver

Waivers reflect the election to forego a legal right to recover public money or receive public property. Once agreed with and communicated to the debtor, it will have the effect of extinguishing the debt and renouncing the right to any future claim on that public money or public property. Waivers result in no cash outlay, and are accounted for under 'Current grants and subsidies expense' in the Comprehensive Operating Statement.

## Postponement

A postponement is a deferral of a right to recover public money or receipt of public property from its due date. This has no effect on revenues or expenses recognised but may affect cash inflows or assets in use.

## Gifts

A gift is an asset or property, deemed surplus to government's requirements, transferred to a suitable recipient, without receiving any consideration or compensation, and where there is no constructive or legal obligation for the transfer. Gifted property is accounted under 'Other administrative expenses' in the Comprehensive Operating Statement.

## Ex gratia

Ex gratia payments or act-of-grace payments are gratuitous payments where no legal obligation exists. All ex gratia payments are approved by the Treasurer. Ex gratia payments result in cash outlay and are accounted for under 'Purchases of goods and services' in the Comprehensive Operating Statement.

## 13. Cash and deposits

	2023	2022
	\$000	\$000
Cash on hand	-	-
Cash at bank	653	358
	<b>653</b>	<b>358</b>

For the purposes of the balance sheet and the cash flow statement, cash includes cash on hand, cash at bank and cash equivalents. Cash equivalents are highly liquid short-term investments that are readily convertible to cash. Cash at bank includes monies held in the Accountable Officer's Trust Account (AOTA) that are ultimately payable to the beneficial owner – refer also to Note 22.

## 14. Cash flow reconciliation

### a) Reconciliation of cash

The total of agency 'Cash and deposits' of \$653 000 recorded in the balance sheet is consistent with that recorded as 'Cash' in the cash flow statement.

#### Reconciliation of net surplus/deficit to net cash from operating activities

	2023	2022
	\$000	\$000
<b>Net surplus/deficit</b>	<b>(189)</b>	<b>(431)</b>
<i>Non-cash items:</i>		
Depreciation and amortisation	28	109
<i>Changes in assets and liabilities:</i>		
(Increase)/decrease in receivables	(60)	285
Increase/(decrease) in payables	112	(22)
Increase in provision for employee benefits	19	16
Increase in other provisions	5	2
<b>Net cash (used in) / from operating activities</b>	<b>(85)</b>	<b>(41)</b>

**b) Reconciliation of liabilities arising from financing activities**

	Cash flows						Other	
	Loans and advances		Equity injections/ withdrawals		Lease liabilities repayments		Total other	
	\$000	\$000	\$000	\$000	\$000	\$000	\$000	\$000
1 July	\$000	-	-	-	-	-	-	-
Borrowings and Advances	-	-	-	-	-	-	-	-
Provisions Equity Injections/ Withdrawals	216	-	-	-	216	-	23	239
	-	-	380	-	-	380	-	380
<b>Total</b>	<b>216</b>	<b>-</b>	<b>380</b>	<b>-</b>	<b>596</b>	<b>23</b>	<b>23</b>	<b>619</b>

**2022**

	Cash flows						Other	
	Loans and advances		Equity injections/ withdrawals		Lease liabilities repayments		Total other	
	\$000	\$000	\$000	\$000	\$000	\$000	\$000	\$000
1 July	\$000	-	-	-	-	-	-	-
Borrowings and Advances	-	-	-	-	-	-	-	-
Provisions Equity Injections/ Withdrawals	198	-	-	-	198	18	18	216
	-	-	-	-	-	-	-	-
<b>Total</b>	<b>198</b>	<b>-</b>	<b>-</b>	<b>-</b>	<b>198</b>	<b>18</b>	<b>18</b>	<b>216</b>

**c) Non-cash financing and investing activities**

The NTEC applies the inter-governmental leases recognition exemption as per the Treasurer's Direction, thus, there are no lease transactions recorded for the 2022-23 financial year.

## 15. Receivables

	2023	2022
	\$000	\$000
<b>Current</b>		
Accounts receivable	85	6
Less: loss allowance	(6)	(6)
	<u>79</u>	<u>-</u>
Accrued contract revenue	-	-
Interest receivables	-	-
GST receivables	3	9
Prepayments	-	-
Other receivables	15	28
	<u>18</u>	<u>37</u>
<b>Total receivables</b>	<b><u>97</u></b>	<b><u>37</u></b>

Receivables are initially recognised when the agency becomes a party to the contractual provisions of the instrument and are measured at fair value less any directly attributable transaction costs. Receivables include contract receivables, accounts receivable, accrued contract revenue and other receivables.

Receivables are subsequently measured at amortised cost using the effective interest method, less any impairments.

Accounts receivable and contract receivables are generally settled within 30 days.

The loss allowance reflects lifetime expected credit losses and represents the amount of receivables the agency estimates are likely to be uncollectible and are considered doubtful

### Accrued contract revenue

Accrued contract revenue relates to the agency's right to consideration in exchange for works completed but not invoiced at the reporting date. Once the agency's rights to payment becomes unconditional, usually on issue of an invoice, accrued contract revenue balances are reclassified as contract receivables. Accrued revenue that does not arise from contracts with customers are reported as part of other receivables.

The NTEC did not have accrued contract revenue in the 2022-23 financial year.

### Prepayments

Prepayments represent payments in advance of receipt of goods and services or that part of expenditure made in one accounting period covering a term extending beyond that period.

There are no prepayments for the NTEC in 2022-23 financial year.

### Credit risk exposure of receivables

Receivables are monitored on an ongoing basis to ensure exposure to bad debts is not significant. The entity applies the simplified approach to measuring expected credit losses. This approach recognises a loss allowance based on lifetime expected credit losses for all accounts receivables, contracts receivables and accrued contract revenue. To measure expected credit losses, receivables have been grouped based on shared risk characteristics and days past due.

The expected loss rates are based on historical observed loss rates, adjusted to reflect current and forward-looking information, including macroeconomic factors.

In accordance with the provisions of the FMA, receivables are written off when based on demonstrated actions to collect, there is no reasonable expectation of recovery for reasons beyond the agency's control.

The agency's credit risk exposure has not materially changed due to minimal business disruption experienced as a result of COVID-19. There is no material impact on the agency's expected credit losses due to COVID-19.

The loss allowance for receivables at reporting date represents the amount of receivables the agency estimates is likely to be uncollectable and is considered doubtful. Ageing analysis and reconciliation of loss allowance for receivables as at the reporting date are disclosed below.

Internal receivables reflect amounts owing from entities controlled by the Northern Territory Government such as other agencies, government business divisions and government owned corporations. External receivables reflect amounts owing from third parties which are external to the Northern Territory Government.

### Loss allowance for receivables

Internal receivables	2023				2022			
	Gross receivables	Loss rate	Expected credit losses	Net receivables	Gross receivables	Loss rate	Expected credit losses	Net receivables
	\$000	%	\$000	\$000	\$000	%	\$000	\$000
Not overdue	2	-	-	2	-	-	-	-
Overdue for less than 30 days	-	-	-	-	-	-	-	-
Overdue for 30 to 60 days	-	-	-	-	-	-	-	-
Overdue for more than 60 days	-	-	-	-	-	-	-	-
<b>Total external receivables</b>	<b>2</b>	<b>-</b>	<b>-</b>	<b>2</b>	<b>-</b>	<b>-</b>	<b>-</b>	<b>-</b>
External receivables	Gross receivables	Loss rate	Expected credit losses	Net receivables	Gross receivables	Loss rate	Expected credit losses	Net receivables
	\$000	%	\$000	\$000	\$000	%	\$000	\$000
	\$000	%	\$000	\$000	\$000	%	\$000	\$000
Not overdue	70	-	-	70	-	-	-	-
Overdue for less than 30 days	5	-	-	5	-	-	-	-
Overdue for 30 to 60 days	-	-	-	-	-	-	-	-
Overdue for more than 60 days	8	75%	6	2	6	100%	6	-
<b>Total external receivables</b>	<b>83</b>	<b>-</b>	<b>-</b>	<b>77</b>	<b>6</b>	<b>100%</b>	<b>6</b>	<b>-</b>

Total amounts disclosed exclude statutory amounts and prepayments as these do not meet the definition of a financial instrument and therefore will not reconcile the receivables note. It also excludes accrued contract revenue where no loss allowance has been provided.

## Reconciliation of loss allowance for receivables

	2023	2022
	\$000	\$000
<b>Internal receivables</b>		
Opening balance	2	-
Written off during the year	-	-
Recovered during the year	-	-
Increase/decrease in allowance recognised in profit or loss	-	-
<b>Total internal receivables</b>	<u>2</u>	<u>-</u>
<b>External receivables</b>		
Opening balance	83	6
Written off during the year	-	-
Recovered during the year	-	-
Increase/decrease in allowance recognised in profit or loss	-	-
<b>Total external receivables</b>	<u>83</u>	<u>6</u>

## 16. Advances and investments

The NTEC had no advances paid, equity accounted investments and investments in shares for the 2022-23 and 2021-22 financial years.

## 17. Other financial assets

### a. Agency as a lessor

The NTEC is not a lessor and therefore, does not have any finance lease or sublease arrangements. There is no lease receivables for 2022-23 and 2021-22.

### b. Contract cost asset

For the 2022-23 and 2021-22 reporting periods, no costs were capitalised as a contract cost asset.

## 18. Property, plant and equipment

	2023	2022
	\$000	\$000
<b>Plant and equipment</b>		
At cost	1 229	1 229
Less: accumulated depreciation	(1 229)	(1 227)
	<u>-</u>	<u>2</u>
<b>Leased property, plant and equipment <sup>1</sup></b>		
At capitalised cost	-	-
Less: accumulated depreciation	-	-
	<u>-</u>	<u>-</u>
<b>Total property, plant and equipment</b>	<u>-</u>	<u>2</u>

## Reconciliation of carrying amount of property, plant and equipment

A reconciliation of the carrying amount of property, plant and equipment at the beginning and end year is set out below:

A reconciliation of the carrying amount of property, plant and equipment at the beginning and end of 2021 22 is set out below:

	Plant and equipment	Leased property, plant and equipment	Total
	\$000	\$000	\$000
<b>2023</b>			
Carrying amount as at 1 July	2	-	2
Additions	-	-	-
Disposals	-	-	-
Depreciation expense / amortisation expense	(2)	-	(2)
<b>Carrying amount as at 30 June</b>	<b>-</b>	<b>-</b>	<b>-</b>
<b>2022</b>			
Carrying amount as at 1 July	85	-	85
Additions	-	-	-
Disposals	-	-	-
Depreciation expense / amortisation expense	(83)	-	(83)
<b>Carrying amount as at 30 June</b>	<b>2</b>	<b>-</b>	<b>2</b>

## Acquisitions

All items of property, plant and equipment with a cost or other value, equal to or greater than \$10 000 are recognised in the year of acquisition and depreciated as outlined below. Items of property, plant and equipment below the \$10 000 threshold are expensed in the year of acquisition.

The construction cost of property, plant and equipment includes the cost of materials and direct labour, and an appropriate proportion of fixed and variable overheads.

## Complex assets

Major items of plant and equipment comprising a number of components that have different useful lives, are accounted for as separate assets. The components may be replaced during the useful life of the complex asset.

## Subsequent additional costs

Costs incurred on property, plant and equipment subsequent to initial acquisition are capitalised when it is probable that future economic benefits in excess of the originally assessed performance of the asset will flow to the agency in future years. Where these costs represent separate components of a complex asset, they are accounted for as separate assets and separately depreciated over their expected useful lives.

## Construction (work in progress)

As part of the financial management framework, the Department of Infrastructure, Planning and Logistics is responsible for managing general government capital works projects on a whole of government basis. Therefore appropriation for the NTEC's capital works is provided directly to the Department of Infrastructure, Planning and Logistics and the cost of construction work in progress is recognised as an asset of that department. Once completed, capital works assets are transferred to NTEC.

## Revaluations and impairment

Plant and equipment are stated at historical cost less depreciation, which is deemed to equate to fair value.

For right-of-use assets, the net present value of the remaining lease payments is often an appropriate proxy for the fair value of relevant right-of-use assets at the time of initial recognition. Subsequently, right-of-use assets are stated at cost less amortisation, which is deemed to equate to fair value.

## Depreciation and amortisation expense

Items of property, plant and equipment, including buildings but excluding land, have limited useful lives and are depreciated using the straight-line method over their estimated useful lives.

The estimated useful lives for each class of asset are in accordance with the Treasurer's Directions and are determined as follows:

	2023	2022
Plant and equipment	3-6 years	3-6 years

Assets are depreciated from the date of acquisition or from the time an asset is completed and held ready for use.

## 19. NTEC as a lessee

The NTEC leases office accommodation, vehicles and storage facilities.

The NTEC has elected to recognise payments for short-term leases and low value leases as expenses on a straight-line basis, instead of recognising a right-of-use asset and lease liability. Short-term leases are leases with a lease term of 12 months or less with no purchase option. Low value assets are assets with a fair value of \$10 000 or less when new and not subject to a sublease arrangement.

### *Inter-governmental leases*

For 2022-23, the NTEC applies the inter-governmental leases recognition exemption as per the Treasurer's Direction – Leases and recognise these as an expense on a straight-line basis over the lease term. These largely relate to the lease of motor vehicles from NT Fleet. Leases of commercial properties for office accommodation are centralised with the Department of Corporate and Digital Development (DCDD). Consequently all lease liabilities and right-of-use assets relating to these arrangements are recognised by DCDD and not disclosed within these financial statements.

The NTEC had no right-of-use asset as at 30 June 2023.

## 20. Intangibles

### a) Total intangibles

	2023	2022
	\$000	\$000
<b>Intangibles with a finite useful life</b>		
<b>Computer software</b>		
Gross carrying amount	262	262
Less: accumulated amortisation	(199)	(173)
Carrying amount at 30 June	<u>63</u>	<u>89</u>
<b>Total intangibles</b>	<b><u>63</u></b>	<b><u>89</u></b>

Intangible assets for the NTEC are comprised of computer software.

The NTEC recognises intangible assets only if it is probable that future economic benefits will flow to the agency and the costs of the asset can be measured reliably. Where an asset is acquired at no or nominal cost, the cost is the fair value as at the date of acquisition.

Intangible assets for the NTEC are stated at historical cost less depreciation, which is deemed to equate to fair value.

Intangibles with limited useful lives are amortised using the straight-line method over their estimated useful lives, which reflects the pattern of when expected economic benefits are likely to be realised.

The estimated useful lives for finite intangible assets are determined in accordance with the Treasurer's Directions and are determined as follows:

	2023	2022
<b>Computer software</b>	<b>10 years</b>	<b>10 years</b>

Due to the method of valuation of the NTEC's assets, no assessment for impairment was deemed necessary as at 30 June 2023, and therefore, no impairment adjustments were required.

### b) Reconciliation of carrying amount of intangibles

2023	Computer software \$000	Total \$000
<b>Intangibles with a finite useful life</b>		
Carrying amount at 1 July	90	90
Additions	-	-
Disposals	-	-
Amortisation	(26)	(26)
Revaluation increments/decrements	-	-
<b>Carrying amount as at 30 June</b>	<b><u>63</u></b>	<b><u>63</u></b>

2022

	Computer software \$000	Total \$000
<b>Intangibles with a finite useful life</b>		
Carrying amount at 1 July	116	116
Additions	-	-
Disposals	-	-
Amortisation	(26)	(26)
Revaluation increments/decrements	-	-
<b>Carrying amount as at 30 June</b>	<b>90</b>	<b>90</b>

## 21. Assets held for sale

Assets and disposal groups are classified as held for sale if their carrying amount will be recovered through a sale transaction or a grant agreement rather than continuing use. Assets held for sale consist of those assets that management has determined are available for immediate sale or granting in their present condition and their sale is highly probable within one year from the date of classification.

These assets are measured at the lower of the asset's carrying amount and fair value less costs to sell. These assets are not depreciated. Non-current assets held for sale have been recognised on the face of the financial statements as current assets.

NTEC had no assets held for sale in 2022-23 and 2021-22.

## 22. Deposits held

	2023 \$000	2022 \$000
Accountable officer's trust account (a)	-	-
Clearing money	-	-

Deposits held mainly comprise Accountable Officer's Trust Account of clearing money.

Accountable Officer's Trust Accounts hold trust monies established under legislations held by the agency on behalf of others for a specific purpose and not for use in operations of government. These include nomination fees for elections, which are refunded to the payee or transferred to the Central Holding Authority. There is no balance in the AOTA as at 30 June 2023.

Clearing money is public money in transit that is payable to another entity. These funds typically do not contribute to the operations of the agency. The NTEC does not have clearing money accounts.

## 23. Payables

	2023 \$000	2022 \$000
Accounts payable	112	26
Accrued salaries and wages	34	27
Accrued expenses	20	1

Liabilities for accounts payable and other amounts payable are carried at cost, which is the fair value of the consideration to be paid in the future for goods and services received, whether or not billed to the agency. Accounts payable are normally settled within 20 days from receipt of valid invoices under \$1 million or 30 days for invoices over \$1 million.

Salaries and wages that are expected to be settled wholly within 12 months after the end of the period in which the employees render the service are recognised and measured at the amounts expected to be paid.

## 24. Provisions

	2023	2022
	\$000	\$000
<b>Current</b>		
<i>Employee benefits</i>		
Recreation leave	190	176
Leave loading	18	14
<i>Other current provisions</i>		
Other provisions	31	27
	<u>239</u>	<u>216</u>
<b>Total provisions</b>	<b><u>239</u></b>	<b><u>216</u></b>

### Employee benefits

Provision is made for employee benefits accumulated as a result of employees rendering services up to the reporting date. These benefits include wages and salaries and recreation leave. Liabilities arising in respect of recreation leave and other employee benefit liabilities that fall due within 12 months of reporting date are classified as current liabilities and are measured at amounts expected to be paid. Non-current employee benefit liabilities that fall due after 12 months of the reporting date are measured at present value of estimated future cash flows, calculated using the appropriate government bond rate and taking into consideration expected future salary and wage levels, experience of employee departures and periods of service.

All recreation leave is classified as a current liability.

No provision is made for sick leave, which is non-vesting, as the anticipated pattern of future sick leave to be taken is less than the entitlement accruing in each reporting period.

Employee benefit expenses are recognised on a net basis in respect of the following categories:

- wages and salaries, non-monetary benefits, recreation leave and other leave entitlements
- other types of employee benefits.

As part of the financial management framework, the Central Holding Authority assumes the long service leave liabilities of government agencies, including NTEC and therefore no long service leave liability is recognised in agency financial statements.

The commission employed 13 employees as at 30 June 2023 (3 of which were part time).

## Superannuation

Employees' superannuation entitlements are provided through the:

- Northern Territory Government and Public Authorities Superannuation Scheme (NTGPASS)
- Commonwealth Superannuation Scheme (CSS)
- or non-government employee nominated schemes for those employees commencing on or after 10 August 1999.

The NTEC makes superannuation contributions on behalf of its employees to the Central Holding Authority or non-government employee-nominated schemes. Superannuation liabilities related to government superannuation schemes are held by the Central Holding Authority and therefore not recognised in the NTEC's financial statements.

## 25. Other liabilities

The NTEC has no financial guarantee contracts, unearned contract revenue, unearned capital grants liability and unearned service concession liabilities for the 2022-23 and 2021-22 financial years.

## 26. Commitments

Commitments represent future obligations or cash outflows that can be reliably measured and arise out of a contractual arrangement and typically binds the agency to performance conditions. Commitments are not recognised as liabilities on the balance sheet.

Commitments may extend over multiple reporting periods and may result in payment of compensation or return of funds if obligations are breached.

Internal commitments reflect commitments with entities controlled by the Northern Territory Government such as other agencies, government business divisions and government owned corporations. External commitments reflect those to third parties which are external to the Northern Territory Government.

Disclosures in relation to capital and other commitments are detailed below.

### a) Capital expenditure commitments

NTEC had no capital expenditure commitments for 2022-23 and 2021-22.

### b) Other non-cancellable contract commitments<sup>1</sup>

Other non-cancellable contract commitment for the NTEC is the commitment to pay for an IT system (eLAPPS). These contract is expected to be payable as follows:

	2023	
	Internal \$000	External \$000
Not later than one year	-	35
Later than one year and not later than five years	-	81
Later than five years	-	-
<b>Total other non-cancellable contract commitments (exclusive of GST)</b>	-	<b>116</b>
Plus: GST recoverable	-	12
<b>Total other non-cancellable contract commitments (inclusive of GST)</b>	-	<b>128</b>

<sup>1</sup> Excludes capital and lease commitments, but includes maintenance contracts. Also excludes amounts recognised as unearned revenue in the agency's financial records.

NTEC had no other expenditure commitments for 2021-22.

## 27. Reserves

### Asset revaluation surplus

The asset revaluation surplus includes the net revaluation increments and decrements arising from the revaluation of non-current assets. Impairment adjustments may also be recognised in the asset revaluation surplus.

NTEC had no balance in the reserves as at 30 June 2023 and 30 June 2022.

## 28. Fair value measurement

Fair value is the price that would be received to sell an asset or paid to transfer a liability in an orderly transaction between market participants at the measurement date.

Fair value measurement of a non-financial asset takes into account a market participant's ability to generate economic benefits by using the asset in its highest and best use or by selling it to another market participant that would use the asset in its highest and best use. The highest and best use takes into account the use of the asset that is physically possible, legally permissible and financially feasible.

NTEC property, plant and equipment, computer software and computer hardware are recognised at cost less depreciation or amortisation. The carrying amounts of these financial assets and liabilities approximates their fair value.

## 29. Financial instruments

A financial instrument is a contract that gives rise to a financial asset of one entity and a financial liability or equity instrument of another entity.

Financial assets and liabilities are recognised on the balance sheet when the NTEC becomes a party to the contractual provisions of the financial instrument. The NTEC's financial instruments include cash and deposits, receivables and payables.

Due to the nature of operating activities, certain financial assets and financial liabilities arise under statutory obligations rather than a contract. Such financial assets and liabilities do not meet the definition of financial instruments as per AASB 132 Financial Instruments: Presentation. These include statutory receivables arising from taxes including GST and penalties.

The NTEC has limited exposure to financial risks as discussed below.

Exposure to interest rate risk, foreign exchange risk, credit risk, price risk and liquidity risk arise in the normal course of activities.

## a) Categories of financial instruments

The carrying amounts of the agency's financial assets and liabilities by category are disclosed in the table below.

2023	Fair value through profit or loss		Amortised cost	Fair value through other comprehensive income	Total
	Mandatorily at fair value	Designated at fair value			
	\$000	\$000	\$000	\$000	\$000
Cash and deposits	-	-	653	-	653
Receivables <sup>1</sup>	-	-	79	-	79
<b>Total financial assets</b>	<b>-</b>	<b>-</b>	<b>732</b>	<b>-</b>	<b>732</b>
Payables <sup>1</sup>	-	-	112	-	112
Lease liabilities	-	-	-	-	-
<b>Total financial liabilities</b>	<b>-</b>	<b>-</b>	<b>112</b>	<b>-</b>	<b>112</b>
<b>2022</b>					
Cash and deposits	-	-	358	-	358
Receivables <sup>1</sup>	-	-	-	-	-
<b>Total financial assets</b>	<b>-</b>	<b>-</b>	<b>358</b>	<b>-</b>	<b>358</b>
Payables <sup>1</sup>	-	-	26	-	26
Lease liabilities	-	-	-	-	-
<b>Total financial liabilities</b>	<b>-</b>	<b>-</b>	<b>26</b>	<b>-</b>	<b>26</b>

<sup>1</sup>Total amounts disclosed here exclude statutory amounts, prepaid expenses and accrued contract revenue

## Categories of financial instruments

NTEC's financial instruments are classified in accordance with AASB 9.

Financial assets are classified under the following categories:

- amortised cost

Financial liabilities are classified under the following categories:

- amortised cost

### Financial assets at amortised cost

Financial assets are classified at amortised cost when they are held by the agency to collect the contractual cash flows and the contractual cash flows are solely payments of principal and interest.

These assets are initially recognised at fair value and subsequently measured at amortised cost using the effective interest method, less impairment. The NTEC's financial assets categorised at amortised cost include cash and deposits and receivables.

### Financial assets at fair value through other comprehensive income

NTEC does not have any financial assets under this category.

### Financial assets at fair value through profit or loss

NTEC does not have any financial assets under this category.

## Financial liabilities at amortised cost

Financial liabilities at amortised cost are measured at amortised cost using the effective interest rate method. The agency's financial liabilities categorised at amortised cost include all accounts payable and lease liabilities.

## Financial liabilities at fair value through profit or loss

NTEC does not have any financial liabilities under this category.

## Derivatives

NTEC does not trade in derivatives.

## b) Credit risk

Credit risk is the risk that one party to a financial instrument will cause financial loss for the other party by failing to discharge an obligation.

The NTEC has limited credit risk exposure (risk of default). In respect of any dealings with organisations external to government, the NTEC has adopted a policy of only dealing with credit worthy organisations and obtaining sufficient collateral or other security where appropriate, as a means of mitigating the risk of financial loss from defaults.

The carrying amount of financial assets recorded in the financial statements, net of any allowances for losses, represents the agency's maximum exposure to credit risk without taking account of the value of any collateral or other security obtained.

Credit risk relating to receivables is disclosed in Note 15.

## c) Liquidity risk

Liquidity risk is the risk the NTEC will not be able to meet its financial obligations as they fall due. The NTEC's approach to managing liquidity is to ensure it will always have sufficient funds to meet its liabilities when they fall due. This is achieved by ensuring minimum levels of cash are held in the NTEC bank account to meet various current employee and supplier liabilities. NTEC's exposure to liquidity risk is minimal. Cash injections are available from the Central Holding Authority in the event of one-off extraordinary expenditure items arise that deplete cash to levels that compromise the agency's ability to meet its financial obligations.

The following tables detail the agency's remaining contractual maturity for its financial liabilities, calculated based on undiscounted cash flows at reporting date. The undiscounted cash flows in these tables differ from the amounts included in the balance sheet, which are based on discounted cash flows.

**2023**

	Carrying amount	Less than a year	1 to 5 years	More than 5 years	Total
	\$000	\$000	\$000	\$000	\$000
<b>Liabilities</b>					
Payables	112	112	-	-	112
Lease liabilities	-	-	-	-	-
<b>Total financial liabilities</b>	<b>112</b>	<b>112</b>	<b>-</b>	<b>-</b>	<b>112</b>

2022

	Carrying amount \$000	Less than a year \$000	1 to 5 years \$000	More than 5 years \$000	Total \$000
<b>Liabilities</b>					
Payables	26	26	-	-	26
Lease liabilities	-	-	-	-	-
<b>Total financial liabilities</b>	<b>26</b>	<b>26</b>	<b>-</b>	<b>-</b>	<b>26</b>

#### d) Market risk

Market risk is the risk the fair value of future cash flows of a financial instrument will fluctuate because of changes in market prices. It comprises interest rate risk, price risk and currency risk.

The NTEC has relatively limited exposure to market risk.

##### (i) Interest rate risk

Interest rate risk is the risk that the fair value or future cash flows of a financial instrument will fluctuate because of changes in market interest rate

NTEC is not exposed to interest rate risk as agency financial assets and financial liabilities are non interest bearing.

##### (ii) Price risk

NTEC is not exposed to price risk as it does not hold units in unit trusts.

##### (iii) Currency risk

NTEC is not exposed to currency risk as it does not hold borrowings denominated in foreign currencies or transactional currency exposures arising from purchases in a foreign currency.

## 30. Related parties

### i) Related parties

The Northern Territory Electoral Commission (NTEC) is a government administrative entity and is wholly owned and controlled by the Territory Government. Related parties of the department include:

- the portfolio minister and key management personnel (KMP) because they have authority and responsibility for planning, directing and controlling the activities of the department directly
- close family members of the portfolio minister or KMP including spouses, children and dependants
- all public sector entities that are controlled and consolidated into the whole of government financial statements
- any entities controlled or jointly controlled by KMP's or the portfolio minister, or controlled or jointly controlled by their close family members.

## ii) Key management personnel (KMP)

Key management personnel of the NTEC are those persons having authority and responsibility for planning, directing and controlling the activities of the commission. As an independent statutory authority, this is the Electoral Commissioner.

## iii) Remuneration of key management personnel

The details below excludes the salaries and other benefits of minister as the minister's remunerations and allowances are payable by the Department of the Legislative Assembly and consequently disclosed within the Treasurer's annual financial statements.

The aggregate compensation of key management personnel of NTEC is set out below:

	2022-23	2021-22
	\$000	\$000
Short-term benefits	259	257
Post-employment benefits	27	27
Long-term benefits	-	-
Termination benefits	-	-
<b>Total</b>	<b>286</b>	<b>284</b>

## iv) Related party transactions:

### Transactions with Northern Territory Government-controlled entities

The department's primary ongoing source of funding is received from the Central Holding Authority in the form of output appropriation.

The following table provides quantitative information about related party transactions entered into during the year with all other Northern Territory Government-controlled entities.

#### 2023

Related party	Revenue from related parties \$000	Payments to related parties \$000	Amounts owed by related parties \$000	Amounts owed to related parties \$000
<i>All NTG departments</i>	143	243	16	30

#### 2022 <sup>1</sup>

Related party	Revenue from related parties \$000	Payments to related parties \$000	Amounts owed by related parties \$000	Amounts owed to related parties \$000
<i>All NTG departments</i>	76	310	1	12

<sup>1</sup> Figures vary from the published 2021-22 financial report for consistency of data derivation.

The commission's transactions with other government entities are not individually significant.

### Other related party transactions are as follows:

Given the breadth and depth of Territory Government activities, related parties will transact with the Territory public sector in a manner consistent with other members of the public including paying stamp duty and other government fees and charges and therefore these transactions have not been disclosed.

## 31. Contingent liabilities and contingent assets

NTEC had no material contingent liabilities or contingent assets in 2022-23 and 2021-22.

## 32. Events subsequent to balance date

No events have arisen between the end of the financial year and the date of this report that require adjustment to, or disclosure in these financial statements.

### 33. Budgetary information

<b>Comprehensive operating statement</b>	2022-23 Actual	2022-23 Original budget	Variance	Note
	\$000	\$000	\$000	
<b>INCOME</b>				
Grants and subsidies revenue				
Current	-	-	-	
Appropriation				
Output	2 061	1 596	465	1
Sales of goods and services	419	50	369	2
Goods and services received free of charge	1 245	719	526	3
Other income	125	-	125	4
<b>TOTAL INCOME</b>	<b>3 850</b>	<b>2 365</b>	<b>1 485</b>	
<b>EXPENSES</b>				
Employee expenses	1 892	1 229	(663)	5
Administrative expenses				
Purchases of goods and services	830	417	(413)	6
Property management	44	-	(44)	
Repairs and maintenance	-	-	-	
Depreciation and amortisation	28	27	(1)	
Services free of charge	1 245	719	(526)	3
Other administrative expenses	-	-	-	
Interest expenses	-	-	-	
<b>TOTAL EXPENSES</b>	<b>4 039</b>	<b>2 392</b>	<b>(1 647)</b>	
<b>NET SURPLUS/(DEFICIT)</b>	<b>(189)</b>	<b>(27)</b>	<b>(162)</b>	
<b>OTHER COMPREHENSIVE INCOME</b>	-	-	-	
<b>COMPREHENSIVE RESULT</b>	<b>(189)</b>	<b>(27)</b>	<b>(162)</b>	

#### Notes:

1. Increase in output relates to the Treasurer's advance funding at the end of financial year.
2. Primarily relates to income for conducting local government by-elections in the financial year.
3. Increased demand for shared services due to increased activity during by-elections.
4. Recovery of the 2022 Local Government Representation Reviews costs from DCMC and NTEC website redevelopment costs from DCDD.
5. Increased staff expenditure to support Legislative Assembly and local government by-elections.
6. Increased operational expenditure to support Legislative Assembly and local government by-elections.

**For election related employee and operational costs:** Budget adjustments, followed by a Treasurer's Advance were processed in 2022-23 to align budget capacity with anticipated expenses.

<b>Balance Sheet</b>	2022-23 Actual	2022-23 Original budget	Variance	Note
	\$000	\$000	\$000	
<b>ASSETS</b>				
<b>Current assets</b>				
Cash and deposits	653	398	255	1
Receivables	97	323	(227)	2
Prepayments	-	-	-	
<b>Total current assets</b>	<b>750</b>	<b>721</b>	<b>188</b>	
<b>Non-current assets</b>				
Property, plant and equipment	-	-	-	
Intangibles	63	64	(1)	
<b>Total non-current assets</b>	<b>63</b>	<b>64</b>	<b>(1)</b>	
<b>TOTAL ASSETS</b>	<b>813</b>	<b>785</b>	<b>28</b>	
<b>LIABILITIES</b>				
<b>Current liabilities</b>				
Payables	167	77	(90)	3
Borrowings and advances- <i>lease liabilities</i>	-	-	-	
Provisions	239	198	(41)	4
<b>Total current liabilities</b>	<b>406</b>	<b>275</b>	<b>(131)</b>	
<b>TOTAL LIABILITIES</b>	<b>406</b>	<b>275</b>	<b>(131)</b>	
<b>NET ASSETS</b>	<b>407</b>	<b>510</b>	<b>(103)</b>	
<b>EQUITY</b>				
Capital	3 101	2 721	380	1
Reserves	-	-	-	
Accumulated funds	(2 694)	(2 211)	(483)	
<b>TOTAL EQUITY</b>	<b>407</b>	<b>510</b>	<b>(103)</b>	

**Notes:**

1. Primarily relates to the cash injection from the Department of Treasury and Finance (DTF) to replenish the commission's cash balance, prior to the grant of the Treasurer's advance.
2. Lower income in 2022-23 financial year as there were no major elections held during the year.
3. Primarily relates to accrued expenses, driven by timing of receipt of invoices.
4. Higher than anticipated provisions due to usage of employee entitlements during the financial year.

<b>Cash flow statement</b>	2022-23 Actual	2022-23 Original budget	Variance	Note
	\$000	\$000	\$000	
<b>CASH FLOWS FROM OPERATING ACTIVITIES</b>				
<b>Operating receipts</b>				
Grants and subsidies received				
Current	-	-	-	
Appropriation				
Output	2 061	1 596	465	1
Receipts from sales of goods and services	547	50	497	2
Interest received	-	-	-	
<b>Total operating receipts</b>	<b>2 608</b>	<b>1 646</b>	<b>962</b>	
<b>Operating payments</b>				
Payments to employees	(1 864)	(1 229)	(635)	3
Payments for goods and services	(829)	(417)	(412)	4
<b>Total operating payments</b>	<b>(2 693)</b>	<b>(1 646)</b>	<b>(1047)</b>	
<b>Net cash from/(used in) operating activities</b>	<b>(85)</b>	<b>-</b>	<b>(85)</b>	
<b>CASH FLOWS FROM FINANCING ACTIVITIES</b>				
<b>Financing receipts</b>				
Equity injections				
Other equity injections	380	-	380	5
<b>Total financing receipts</b>	<b>380</b>	<b>-</b>	<b>380</b>	
<b>Financing payments</b>				
Finance lease payments	-	-	-	
<b>Total financing payments</b>	<b>-</b>	<b>-</b>	<b>-</b>	
<b>Net cash from/(used in) financing activities</b>	<b>380</b>	<b>-</b>	<b>380</b>	
Net increase/(decrease) in cash held	295	-	295	
Cash at beginning of financial year	358	398	(40)	
<b>CASH AT END OF FINANCIAL YEAR</b>	<b>653</b>	<b>398</b>	<b>255</b>	

**Notes:**

1. Increase in output relates to the Treasurer's advance funding at the end of the financial year.
2. Primarily relates to income for conducting local government by-elections in the financial year.
3. Increased staff expenditure to support Legislative Assembly and local government by-elections.
4. Increased operational expenditure to support Legislative Assembly and local government by-elections.
5. Cash injection from the DTF to replenish the commission's cash balance, prior to the grant of the Treasurer's advance.



